



## Coral House, Rochdale, OL16

£990 Per Month

\*\*EVENING AND WEEKEND VIEWINGS AVAILABLE\*\*

Welcome to Simple Life's Coral Mill homes. Built on the site of a former cotton mill. Newhey is close to Rochdale's many shops and leisure facilities, with the town centre perfect for socialising.

The two double bedroom Alder is a spacious apartment perfect for city living. With an open plan kitchen/diner attached to a light and airy living room, it is the perfect space for entertaining guests. Benefiting from two bathrooms – one en-suite and another full bathroom suite – the apartment is great for friends sharing or couples who enjoy having a little extra room.

Complete with integrated kitchen appliances, including a washing machine, dishwasher and hob/oven, isn't it time for you to start living the Simple Life?

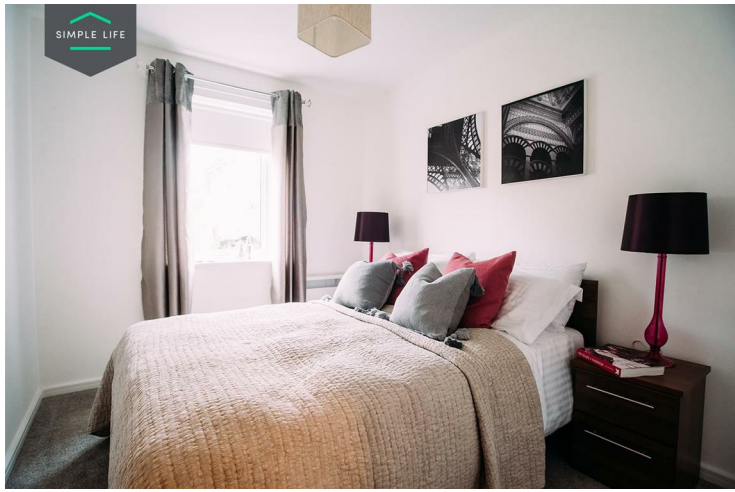
The bright lights of Manchester are just 10 miles away. Handily placed beside Junction 21 of the M62, the excellent travel links include three train stations, with the village also on the Rochdale Metrolink tramline.

The choice of schools includes well respected Hollingworth Academy and a modern primary school within walking distance.

To visit Coral Mill, please use postcode OL16 3FR in your satnav.

Deposit £1140  
Holding Deposit £220  
Unfurnished  
Council Tax B  
Available 29th May 2026





## Key Features

- Allocated parking space
- Fitted wardrobes to master bedroom
- Fridge freezer
- Oven and hob
- Dark ash style worktops
- Secure-By-Design windows and doors
- Dishwasher
- Washing/drying machine
- Light wash wood effect flooring
- Modern, white kitchen units

## Location

