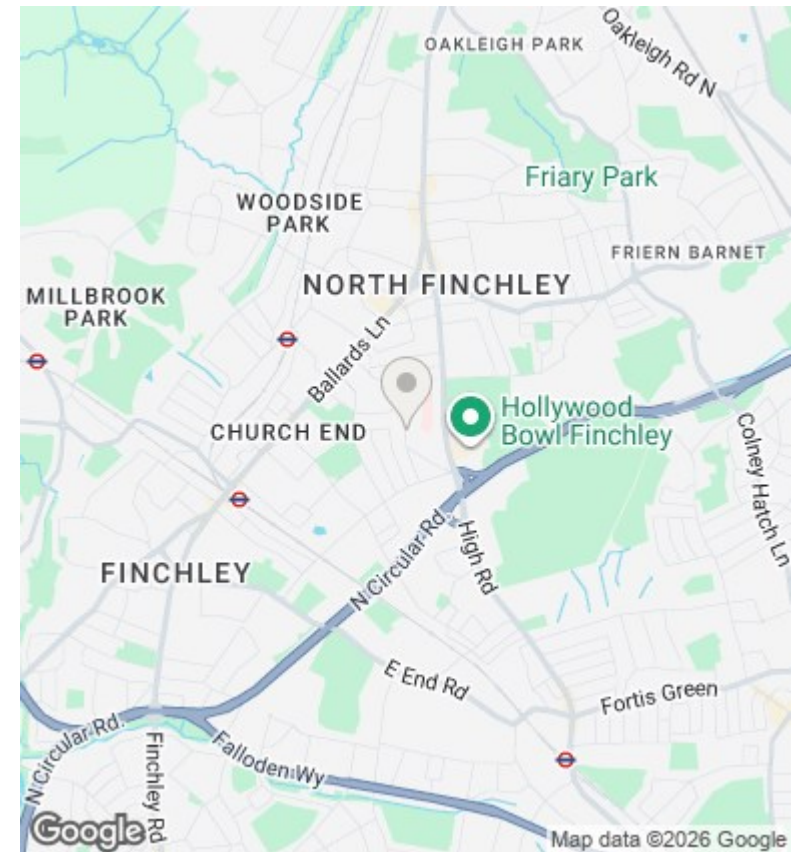
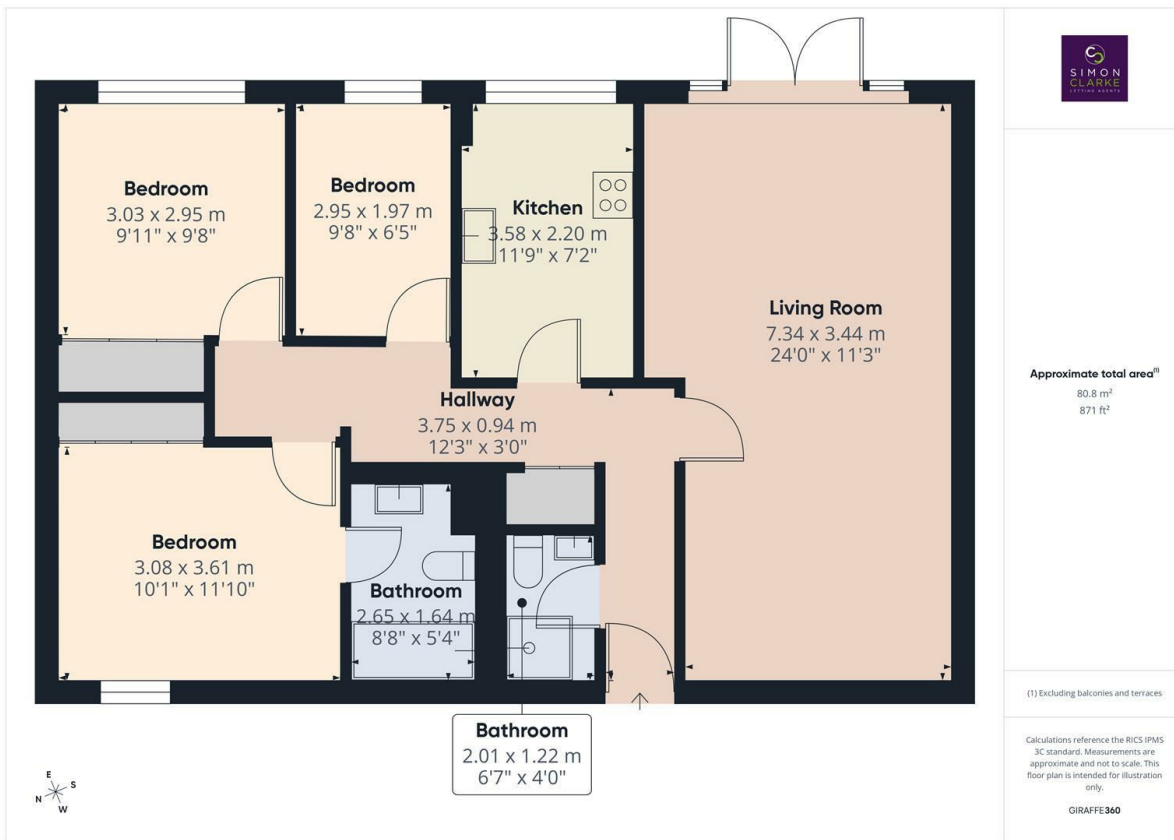




Bow Lane, London, N12 0JL

£2,500 Per Calendar Month

- Ground floor three bedroom, 2 bathroom apartment in a purpose-built block
- Master bedroom with fitted wardrobes and en-suite bathroom
- Deposit £2880
- Available from 23rd May 2026
- Private garden with direct access from the reception room; garden maintenance included
- video entryphone system
- Part furnished / unfurnished
- Modern kitchen with integrated appliances including double oven and dishwasher
- wooden flooring throughout
- Council tax band E



Directions

Viewings

Viewings by arrangement only. Call 02083499000 to make an appointment.

Council Tax Band

E

EPC Rating:

C

Energy Efficiency Rating		Current	Potential
<i>Very energy efficient - lower running costs</i>			
(92 plus) A			
(81-91) B			
(69-80) C		80	80
(55-68) D			
(39-54) E			
(21-38) F			
(1-20) G			
<i>Not energy efficient - higher running costs</i>			
England & Wales	EU Directive 2002/91/EC		