

Callaghans

Independent Estate Agents, Surveyors, Valuers and Mortgage Brokers

13 Pimmcroft Way, **Sale, M33 2LA**



£410,000

**Semi Detached
Three Bedrooms
Grey Tiled Bathroom
Front and Rear Gardens
White Gloss Kitchen
Garage and Driveway**

Callaghans Estate Agents
46 Church Road, Gatley, SK8 4NQ
Telephone: 0161 491 4000, Fax: 0161 491 55 44
Website: www.callaghansltd.com Email: admin@callaghansltd.com

Callaghans are pleased to offer for sale this modern and spacious semi-detached property, situated on a popular estate in Sale. The property benefits from an excellent location close to a Metrolink tram stop and the motorway network, providing convenient access for commuters and families alike.

To the front of the property is a generous lounge which flows seamlessly into the dining area through an attractive archway. Patio doors from the dining area open directly onto the rear garden, creating a smooth transition between indoor and outdoor living and making this an ideal space for both relaxing and entertaining. The kitchen overlooks the garden and is fitted with stylish white gloss wall and base units, offering a bright and functional cooking space. The ground floor layout combines to create a welcoming and versatile family living area. An integrated Garage completes the ground floor of this spacious property.

On the first floor, the family bathroom features grey tiled walls, a modern suite and a corner shower cubicle. For added convenience, there is also a separate WC. The property offers three well-sized bedrooms, each benefitting from fitted furniture, providing ample storage and comfortable accommodation.

Located within easy reach of well-regarded schools, local amenities and transport links, this property is ideally suited for family living.

Contact Callaghans today to find out more or to arrange a viewing.

Lounge 17' 7" x 11' 11" (5.35m x 3.63m)

Dining Room 8' 0" x 9' 8" (2.44m x 2.95m)

Kitchen 10' 2" x 7' 10" (3.11m x 2.4m)

Family Bathroom 7' 10" x 5' 9" (2.38m x 1.74m)

Separate Toilet 4' 9" x 2' 9" (1.44m x 0.85m)

Bedroom One 14' 5" x 11' 0" (4.4m x 3.35m)

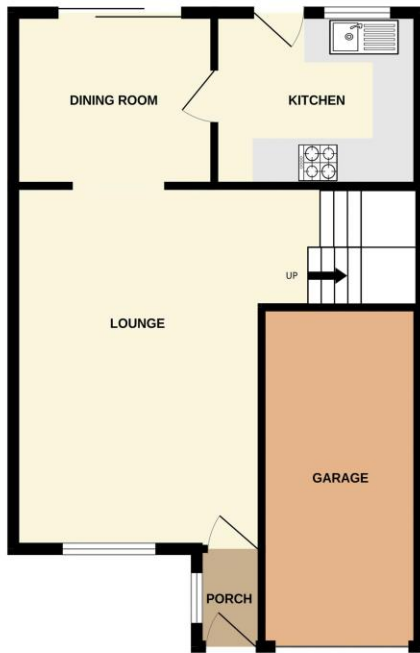
Bedroom Two 11' 0" x 11' 2" (3.35m x 3.4m)

Bedroom Three 10' 9" x 9' 2" (3.28m x 2.8m)

Garage 7' 11" x 16' 5" (2.42m x 5m)

Callaghans Estate Agents
46 Church Road, Gatley, SK8 4NQ
Telephone: 0161 491 4000, Fax: 0161 491 55 44
Website: www.callaghansltd.com Email: admin@callaghansltd.com

GROUND FLOOR
580 sq.ft. (53.9 sq.m.) approx.



1ST FLOOR
527 sq.ft. (49.0 sq.m.) approx.



TOTAL FLOOR AREA : 1107 sq.ft. (102.8 sq.m.) approx.

Whilst every attempt has been made to ensure the accuracy of the floorplan contained here, measurements of doors, windows, rooms and any other items are approximate and no responsibility is taken for any error, omission or mis-statement. This plan is for illustrative purposes only and should be used as such by any prospective purchaser. The services, systems and appliances shown have not been tested and no guarantee as to their operability or efficiency can be given.
Made with Metropix ©2026

Disclaimer:

These particulars, whilst believed to be accurate are set out as a general guideline only or guidance and do not constitute any part of an offer or contract. Intending purchasers should not rely on them as statements of representation or fact, but must satisfy themselves by inspection or otherwise as to their accuracy. Please note that we have not tested any apparatus, equipment, fixtures, fittings or services, including gas central heating and so cannot verify they are in working order or fit for their purpose. Further more solicitors should confirm movable items described in the sales particulars are, in fact included in the sale since circumstances do change during marketing or negotiations. Although we try to ensure accuracy, measurements used in this brochure may be approximate. Therefore if intending purchasers need accurate measurements to order carpeting or to ensure existing furniture will fit, they should take such measurements themselves. **YOUR HOME IS AT RISK IF YOU DO NOT KEEP UP REPAYMENTS ON A MORTGAGE OR OTHER LOAN SECURED ON IT**