



4 Dewberry Close, Wimborne Minster, Wimborne, £330,000

- Sought After Location
- South West Facing Garden
- Two Parking Spaces
- Two Double Bedroom End Of Terrace
- Gas Central Heating
- Ground Floor Cloakroom
- Excellent Condition Throughout
- En Suite & Main Bathroom
- Double Glazing

4 Dewberry Close, Wimborne BH21 4EY

A superb two double bedroom, two bathroom end of terraced house situated in a popular and convenient location within a short distance of Wimborne Town centre, Wimborne First School and perfect for scenic walks with the nature reserve being close by. The property is very well presented throughout and offers modern living with good size lounge, kitchen with French doors to a South West facing rear garden perfect for relaxing or outside dining. Both bedrooms are doubles with the main room having an en-suite. A lovely bathroom serves the second bedroom. Parking for two cars to the front. Perfect for a first time buyer or someone looking to downsize.

 2  2  1  B Council Tax Band: C



Property Details

Area

Wimborne Minster is a historic market town in Dorset that offers a high quality of life through its blend of heritage, community, and natural surroundings. The town is well known for landmarks such as Wimborne Minster, a historic church that reflects the town's long history and cultural importance. Wimborne has a vibrant town centre with independent shops, cafés, and regular markets that support a strong local economy and community atmosphere. Annual events and festivals also contribute to a lively social environment. The town is surrounded by attractive countryside and rivers, offering opportunities for walking and outdoor recreation, while still providing convenient access to larger nearby towns. With its combination of historic character, community spirit, local amenities, and access to nature, Wimborne is an appealing place for both residents and visitors.

Description

Accommodation Comprises. Front door through to ENTRANCE HALL, door to LOUNGE, understairs storage cupboard, window to front aspect, with custom fitted shutters, opening through to KITCHEN, range of work surfaces with eye and low level storage cupboards, built in electric oven and hob with splashback and extractor hood over, space for fridge/freezer and dishwasher, further space for washing

machine with work surface over, double opening French Doors to rear garden. CLOAKROOM, low level w.c, wash hand basin
Stairs from the entrance hall to FIRST FLOOR LANDING, hatch to loft space
BEDROOM ONE, double room, range of built in wardrobes, window to rear aspect,
EN SUITE, walk in shower cubicle with glazed door, low level w.c wash hand basin with tiled splashback
BEDROOM TWO, double room, fitted wardrobes plus further storage, window to front
BATHROOM, white suite with paneled bath with shower mixer taps, part tiled, low level w.c. wash hand basin with splashback and mirror over, heated towel rail.
OUTSIDE, REAR GARDEN - A super South West facing mature garden that offers a good deal of seclusion, patio area adjoins the property with raised flower borders, remainder of the garden is laid to lawn with further with various mature shrubs, fully enclosed by timber panel fencing, garden shed, side access via a path to the FRONT, provides two PARKING spaces.

Tenure

Freehold

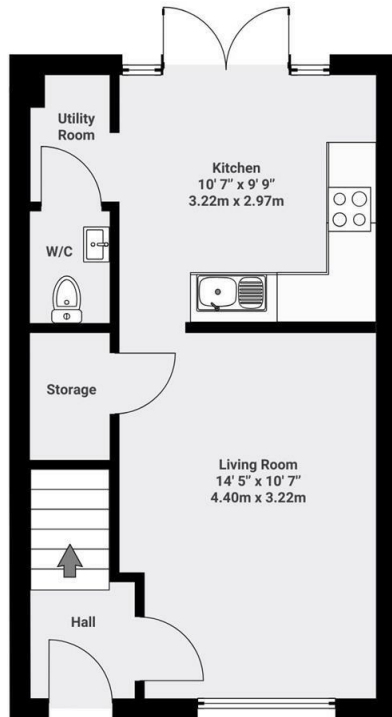




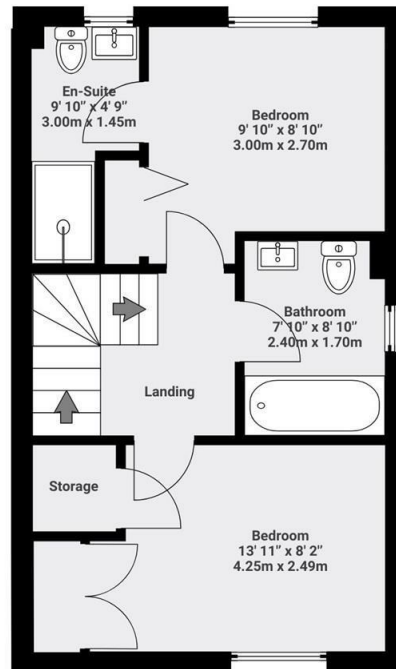
Dewberry Close
Wimborne
BH21

DETAILS
Total area: 679 sq ft

▼ Ground Floor



▼ 1st Floor



The floorplan is for illustrative purposes only. All dimensions and measurements are approximate. Actual sizes may vary due to construction tolerances, finishing variations, and other factors. Prospective buyers or tenants are advised to verify all measurements independently before making any decisions. FJVISUALS



Energy Efficiency Rating		Current	Potential
Very energy efficient - lower running costs			
(92 plus)	A	85	
(81-91)	B		
(69-80)	C		
(55-68)	D		
(39-54)	E		
(21-38)	F		
(1-20)	G		
Not energy efficient - higher running costs			
England & Wales		EU Directive 2002/91/EC	

Viewings

Viewings by arrangement only. Call 01202 88 90 88 to make an appointment.