

Westbury Close

Ruislip • • HA4 8EF
Asking Price: £1,000,000



coopers
est 1986

Westbury Close

Ruislip • • HA4 8EF

This beautifully presented family home offers spacious and versatile living across two floors, complemented by a large summer house in the garden. The ground floor features a welcoming entrance hall leading to a bright living room at the front of the property. To the rear, a stunning open-plan kitchen and dining area forms the heart of the home, ideal for both everyday living and entertaining, with direct access to the garden. A dedicated office provides an excellent space for working from home, while a garage/utility room adds practicality and convenience. Upstairs, the first floor offers four well-proportioned bedrooms, including a generous principal bedroom. The family bathroom and additional ensuite shower room ensure comfort for a growing household. This home combines style and functionality, making it ideal for modern family living.

FOUR BEDROOM

SEMI DETACHED

GARAGE

EXTEND KITCHEN & DINER

PRIVATE RECEPTION ROOM

OFFICE

SUMMER HOUSE

OFF STREET PARKING

SOUGHT AFTER LOCATION

1783 SQ.FT

These particulars are intended as a guide and must not be relied upon as statements of fact. Your attention is drawn to the Important Notice on the last page.

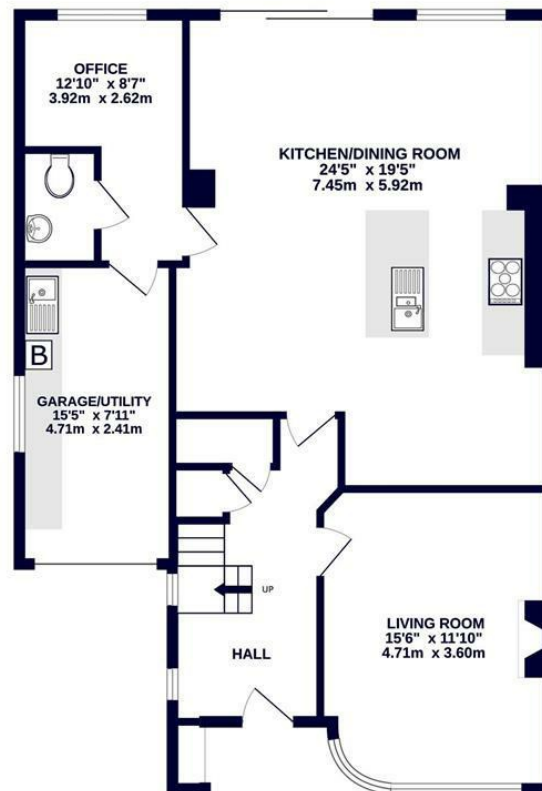




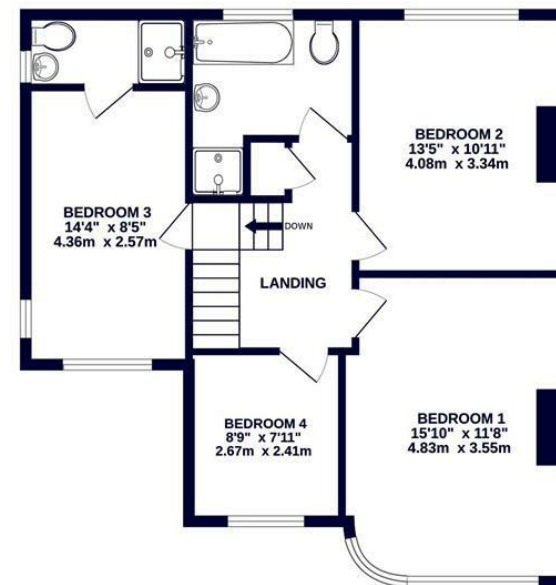
OUTBUILDING
142 sq.ft. (13.1 sq.m.) approx.



GROUND FLOOR
956 sq.ft. (88.8 sq.m.) approx.



1ST FLOOR
686 sq.ft. (63.7 sq.m.) approx.



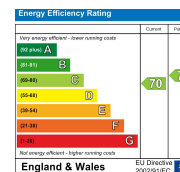
TOTAL FLOOR AREA : 1783 sq.ft. (165.6 sq.m.) approx.

Whilst every attempt has been made to ensure the accuracy of the floorplan contained here, measurements of doors, windows, rooms and any other items are approximate and no responsibility is taken for any error, omission or mis-statement. This plan is for illustrative purposes only and should be used as such by any prospective purchaser. The services, systems and appliances shown have not been tested and no guarantee as to their operability or efficiency can be given.
Made with Metropix ©2025



126-128 High Street, Ruislip,
Middlesex, HA4 8LL
ruislipsales@coopersresidential.co.uk

CoopersResidential.co.uk



Important Notice: These particulars, whilst believed to be accurate are set out as a general outline only for guidance and do not constitute any part of an offer or contract. Intending purchasers should not rely on them as statements or representation of fact, but must satisfy themselves by inspection or otherwise has the authority to make or give any representation or warranty in respect of the property.