

LEASEHOLD



Apartment

19 GARAMOND COURT SOMERSET STREET, REDCLIFFE, BRISTOL, BS1 6FH

Asking Price

£170,000

FEATURES

- Living Room
- Kitchen
- 1 Bedroom
- Bathroom
- Allocated parking space
- FTB/Investor



bestestates
SALES | LETTINGS | MANAGEMENT

1 Bedroom Apartment located in BRISTOL

Call us on

0117 325 1489

info@cliftonsandbutlers.net

<https://www.cliftonsandbutlers.co.uk/>

Perfect for your first home! Or as an investment purchase.

This well presented one bedroom first floor apartment is located close to Bristol Temple Meads and the Harbourside.

The accommodation comprises of hallway, family bathroom, principal bedroom overlooking the well looked after communal gardens. The living room is light and bright opening into the well-appointed kitchen,

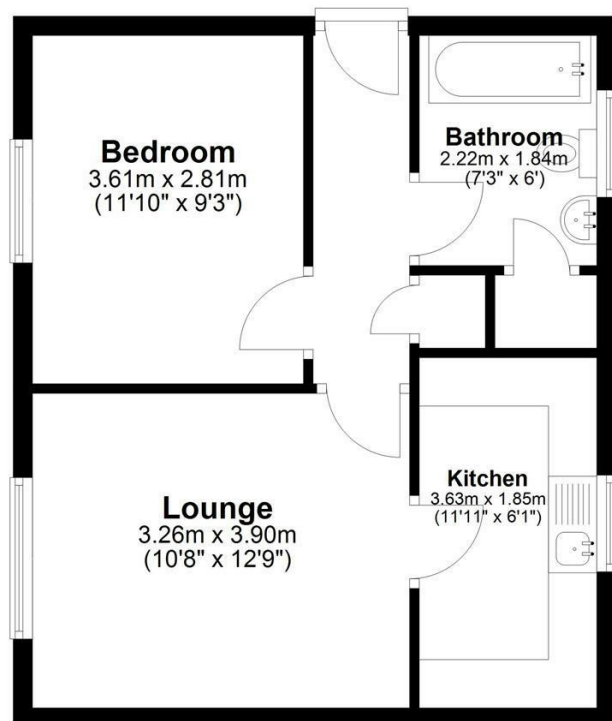
To the outside is an allocated parking space

Council Tax Band

B

First Floor

Approx. 40.4 sq. metres (435.3 sq. feet)



Total area: approx. 40.4 sq. metres (435.3 sq. feet)

Energy Efficiency Rating		
	Current	Potential
Very energy efficient - lower running costs		
(92 plus) A		
(81-91) B		
(69-80) C	78	80
(55-68) D		
(39-54) E		
(21-38) F		
(1-20) G		
Not energy efficient - higher running costs		
England & Wales		
EU Directive 2002/91/EC		

Agents Note: Whilst every care has been taken to prepare these particulars, they are for guidance purposes only. All measurements are approximate and are for general guidance purposes only and whilst every care has been taken to ensure their accuracy, they should not be relied upon and potential buyers are advised to recheck the measurements.

bestestates
SALES | LETTINGS | MANAGEMENT