



Wharf Road, London N1

Guide price £700,000 Leasehold





Description

Located on the 4th floor, within the popular City Wharf development, this two-bedroom apartment extends 812 sq ft, features a generous private balcony and further benefits from a communal terrace with roof top views.

The apartment incorporates a spacious open-plan reception, fitted kitchen with integrated appliances, a private balcony, principal bedroom with built in wardrobes with an en suite shower room, a further double bedroom with fitted wardrobes and excellent storage space. A contemporary family bathroom is accessed via the central hallway. The development offers residents a concierge service and shared garden spaces with scenic canal views. Located just 0.5 miles from Old Street Station, the Cooper Building ensures convenient access to the City, Shoreditch, and Angel / Upper Street district.

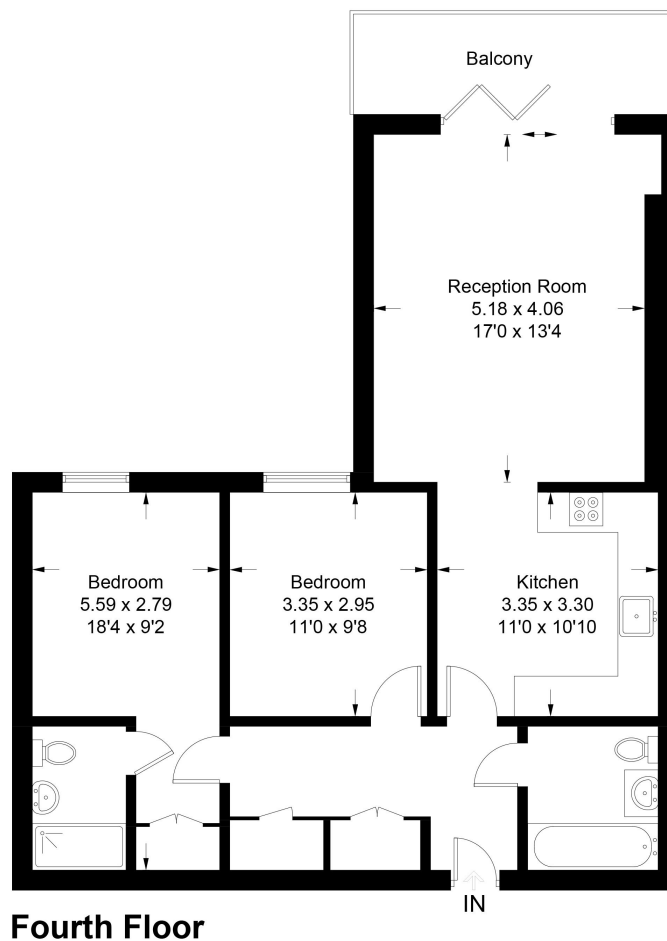


- 2 bedroom
- 2 Bathrooms
- Underground Parking
- Private balcony
- Concierge

Communal garden
0.5 miles from Old Street station
Approx. 812 sq ft / 67.1 sq m

Cooper Building, N1

Approximate Gross Internal Area = 75.4 sq m / 812 sq ft



Fourth Floor

Illustration for identification purposes only, measurements are approximate, not to scale. Fourlabs.co © (ID1288475)

City
25 Walbrook The Walbrook
Building,
London EC4N 8AF
+4420 7337 4000

Urban living, your way.

jll.co.uk/residential

© 2019 Jones Lang LaSalle IP, Inc. All rights reserved. All information contained herein is from sources deemed reliable; however, no representation or warranty is made to the accuracy thereof.

