



Cwrt Ty Mawr, £260,000

- Three-bedroom semi-detached property
- Quiet and desirable location on Cwrt Ty Mawr
- Close to Caerphilly town centre and train station
- Spacious living room
- Kitchen/dining room ideal for entertaining
- Three well-proportioned bedrooms





About the property

Nestled within the peaceful setting of Cwrt Ty Mawr, this charming three-bedroom semi-detached property offers the perfect blend of comfort, convenience, and practicality-making it an ideal choice for families, first-time buyers, or those looking to upsize.

The property enjoys a prime position within close proximity to Caerphilly town centre, where a range of shops, cafés, and local amenities can be found, as well as excellent transport connections via Caerphilly train station-perfect for commuters.

Upon entering, you are welcomed into a bright and inviting living room, providing a cosy yet spacious area to relax and unwind. To the rear, the well-appointed kitchen/dining room offers a fantastic space for both everyday living and entertaining, with ample room for family meals and social gatherings.

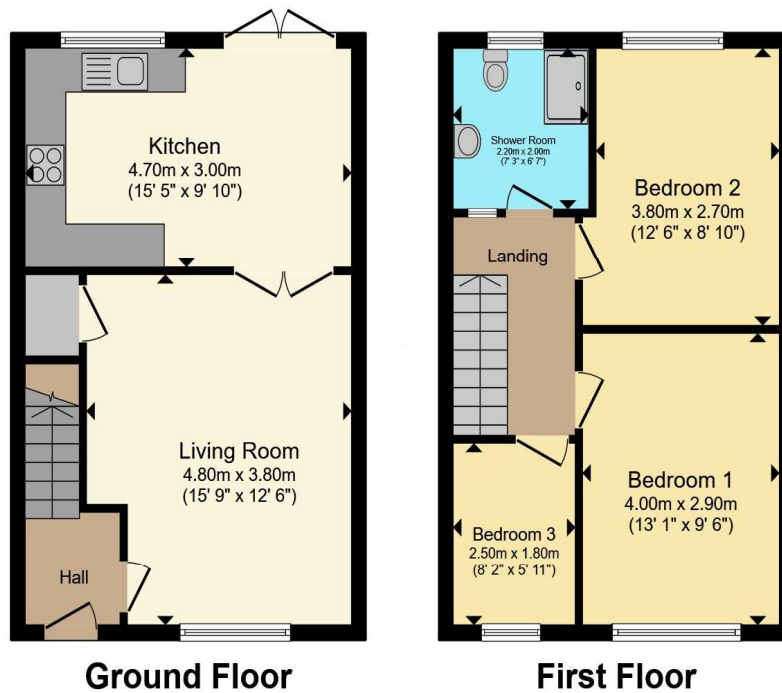
Accommodation

Upstairs, the property continues to impress with three generously sized bedrooms, each offering comfortable accommodation and flexibility for growing families or home working. A modern family bathroom completes the first-floor layout.

Externally, the home benefits from an enclosed rear garden-ideal for enjoying outdoor dining, children's play, or simply relaxing in a private setting. To the front, a well-maintained garden and a driveway provide convenient off-road parking.



Floorplan



Total floor area 75.8 m² (816 sq.ft.) approx

This floor plan is for illustrative purposes only. It is not drawn to scale. Any measurements, floor areas (including any total floor area), openings and orientation are approximate. No details are guaranteed, they cannot be relied upon for any purpose and they do not form part of any agreement. No liability is taken for any error, omission or misstatement. A party must rely upon its own inspection(s). Powered by www.propertybox.io



Important Information

Note while we endeavour to make our sales details accurate and reliable, if there is any point which is of particular interest to you, please contact the office and we will be pleased to confirm the position for you. We have not personally tested any apparatus, equipment, fixtures, fittings or services and cannot verify they are in working order or fit for their purposes. Nothing in these particulars is intended to indicate that carpets or curtains, furnishings or fittings, electrical goods (whether wired or not). Gas fires or light fittings or any other fixtures not expressly included form part of the property offered for sale. This computer generated Floorplan, if applicable, is intended as a general guide to the layout and design of the property. It is not to scale and should not be relied upon for dimensions. Tenure: We cannot confirm the tenure of the property as we have not had access to the legal documents. The buyer is advised to obtain verification from their solicitor or surveyor.

Peter Alan Limited is registered in England and Wales under company number 2073153, Registered Office is Cumbria House, 16-20 Hockliffe Street, Leighton Buzzard, Bedfordshire, LU7 1GN. VAT Registration Number is 500 2481 05. For activities relating to regulated mortgages and non-investment insurance contracts, Peter Alan Limited is an appointed representative of Connells Limited which is authorised and regulated by the Financial Conduct Authority. Connells Limited's Financial Services Register number is 302221. Most buy-to-let