

Guide Price £550,000



16 Landunvez Place, Bradninch, Exeter, Devon, EX5 4PB

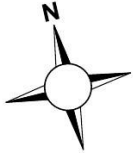
- 5 double bedrooms, two with fitted wardrobes
- Large, contemporary kitchen/dining room
- Utility room and downstairs cloakroom
- Lawn garden with versatile, additional garden
- Close to the primary school
- 3 en suite shower/bathrooms, one for family use
- Large sitting room with gas fire
- Gas central heating and double glazing
- Single garage, parking and garden shed
- Good local amenities

Sales, Lettings, Mortgages:

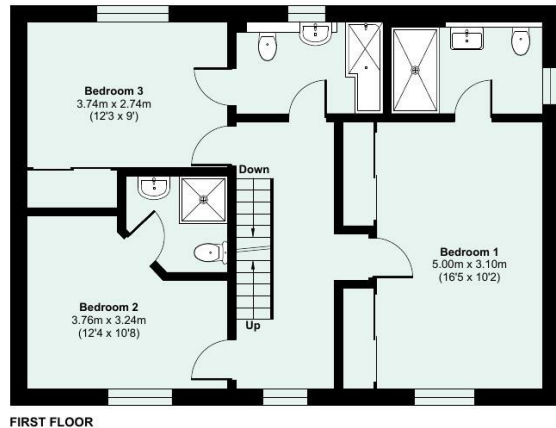
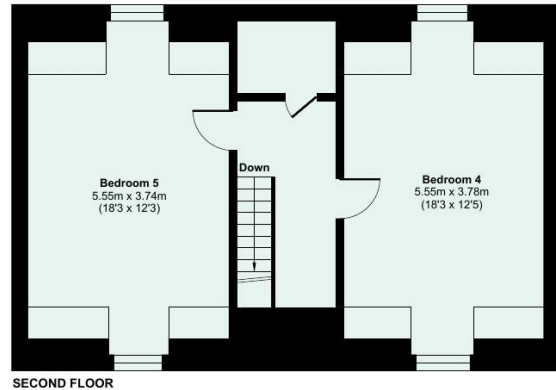
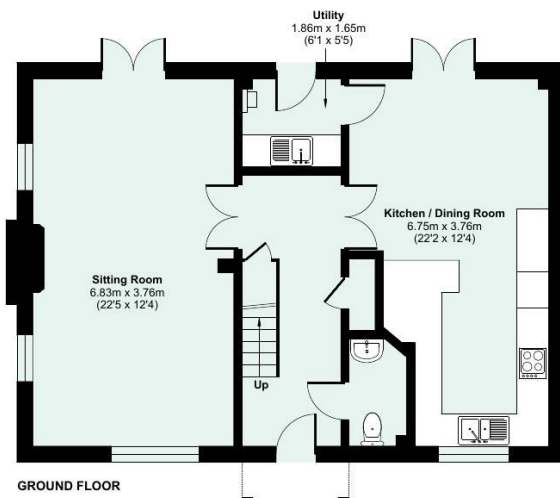
Bampton 01398 332006 | Cullompton 01884 32100 | Tiverton 01884 253500

[*Watch the Seddons Video Tour*](#)

Offering extensive family accommodation, this beautifully presented, detached house lies on the edge of a small development with an extended, large garden with rolling countryside and rural views beyond. Quick access to Exeter via the B3181 main road, local bus services or the motorway, ideal for commuting.



Approximate Area = 1950 sq ft / 181.1 sq m
 Limited Use Area(s) = 127 sq ft / 11.7 sq m
 Total = 2077 sq ft / 192.8 sq m
 For identification only - Not to scale



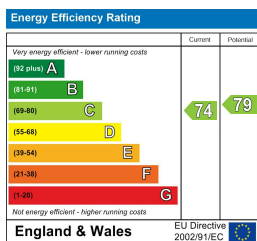
Floor plan produced in accordance with RICS Property Measurement 2nd Edition, Incorporating International Property Measurement Standards (IPMS2 Residential). © ncthecom 2026. Produced for Seddon Estate Agents LLP. REF: 1446445



Council Tax Band

F

EPC Rating



Viewings

Viewings by arrangement only. Please call 01884 32100 to make an appointment.