



MEADOW VIEW

Bildeston | Suffolk



Chapman Stickels

MEADOW VIEW, BROOKSFIELD, BILDESTON, IP7 7EJ

Hadleigh – 5 miles

Ipswich – 14 miles

Bury St Edmunds – 15 miles

- Entrance hall • Sitting Room • Dining Room •
- Conservatory • Kitchen • Utility • Cloakroom •
- Four bedrooms • Two bathrooms •
- Garden • Garage •

The Property

CHAIN FREE - Meadow View is a spacious four-bedroom detached family house located discreetly in the corner of a cul-de-sac, close to the heart of Bildeston, enjoying far reaching countryside views.

The spacious accommodation is arranged over four floors and comprises an inviting entrance hall which leads to the well equipped kitchen, utility room, cloakroom and W.C. Across the hall is a dining room with access down to a large garage with electricity connected. From the hall, a downward staircase leads to an impressive sitting room which overlooks the rear garden and provides access to the conservatory. Further accommodation on the third and fourth floors comprises four bedrooms (one with ensuite shower), and a family bathroom.

Outside is a drive providing ample off-road parking, with a garage connected to one side, and to the rear lies a generously sized, fully enclosed well-kept garden with sun terrace.

Location

Bildeston is a popular mid-Suffolk village approximately 5 miles from the market town of Hadleigh. The village is well served by a thriving Post Office / General Stores, Doctor's Surgery, Primary School, the acclaimed Bildeston Crown, pubs, and the nearby Hollow Trees Farm Shop.

A SPACIOUS FOUR STOREY DETACHED HOUSE DISCREETLY POSITIONED, CLOSE TO THE CENTRE OF BILDESTON WITH PARKING AND GARDEN



EPC Rating
Current D (60). Potential C(76).

Services

We understand mains water, electricity and drainage are connected. Oil-fired central heating to radiators.

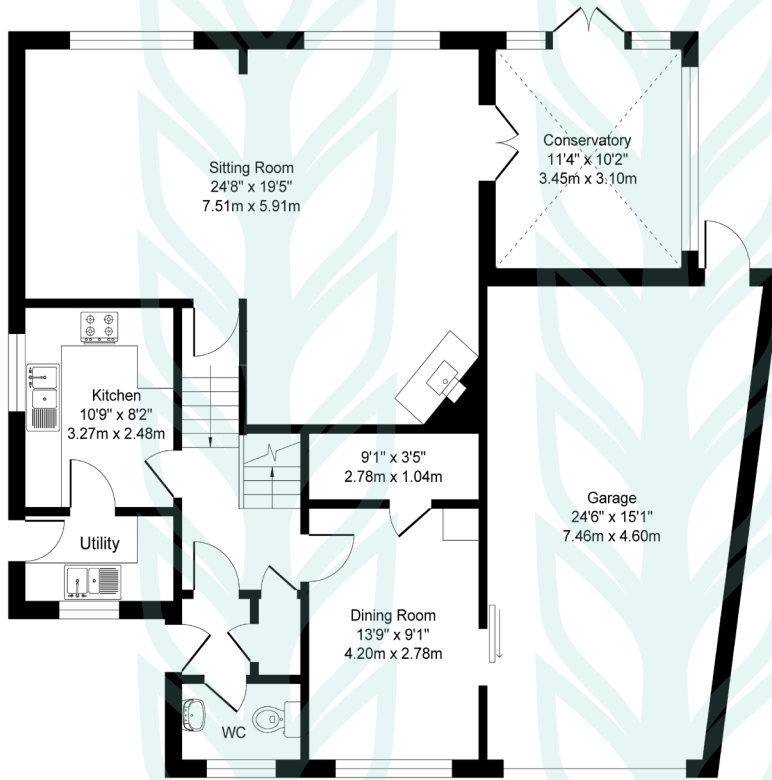
Local Authority and Council Tax

Babergh with Mid Suffolk District Council
Band D (2025)

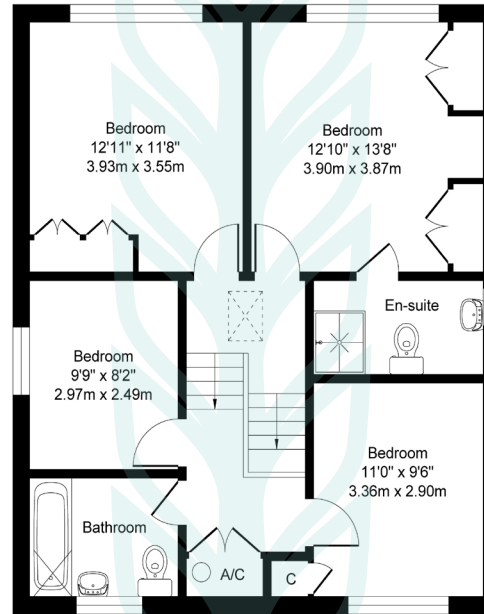


Meadow View, Brooksfield, Bildeston, IP7 7EJ

Approximate Floor Area
Main House - 1701 sq. ft / 158.07 sq. m
Garage - 328 sq. ft / 30.54 sq. m
Total - 2029 sq. ft / 188.61 sq. m



Lower Ground/Ground Floor



First Floor

Illustration for identification purposes only, measurements approximate, not to scale. Copyright



Chapman Stickels

The Corn Exchange,
Market Place,
Hadleigh,
Suffolk,
IP7 5DN

info@chapmanstickels.co.uk
www.chapmanstickels.co.uk

01473 372 372

All enquiries:

Benedict Stickels
ben@chapmanstickels.co.uk

Cleo Shiel
cleo@chapmanstickels.co.uk



Scan the QR code to
visit our website

rightmove

OnTheMarket.com

Zoopla

PrimeLocation.com

IMPORTANT NOTICE
Chapman Stickels states these particulars are for general information only and do not constitute an offer or contract or part thereof. All descriptions, photographs and plans are for guidance only and should not be relied upon as statements or representations of fact. All measurements are approximate where stated. Any prospective purchaser must satisfy themselves of the accuracy of the information within these particulars by inspection or otherwise. Chapman Stickels does not have any authority to give any representations or warranties whatsoever in relation to this property (including but not limited to planning/building restrictions), nor can it enter into any contract on behalf of the client. We do not accept responsibility for any expenses incurred by prospective purchasers in inspecting properties which have been sold, let or withdrawn. If there is anything of particular importance to you, please contact us where we will endeavour to have any information or queries checked.