

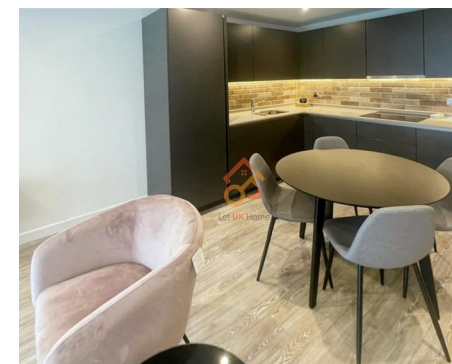
Let **UK** Home

**2 Bedrooms**

**Flat**

**Located  
in Manchester**

**£1,600 Per Month**



[pmadmin@letukhome.co.uk](mailto:pmadmin@letukhome.co.uk)

<https://www.letukhome.co.uk/>

01615219812



# 43 Potato Wharf Manchester

M3 4NX



Let UK Home are delighted to offer this 2-bedroom apartment in Wilson Building, part of Potato Wharf, an idyllic canal side development located in the sought after neighbourhood of Castlefield.

This property comprises a large bright open plan kitchen and living room, two double bedrooms(master en-suite), a large family sized bathroom and ample storage.

The property is situated on western fringes on Manchester city centre in the Castlefield area and between the River Medlock and the Bridgewater Canal. Here, history and modernity perfectly blend, allowing one to enjoy peace and tranquility.

Transport options include nearby Deansgate rail station, the Metrolink Tram, local bus routes and road connections via the A56, A57, M602 and M60. Manchester Oxford Road is within walking distance. And it is very convenient to get to Manchester Airport. From the apartment, you can quickly reach well-known universities such as the University of Manchester, Manchester Metropolitan University, the University of Salford, and the University of Bolton.

The surrounding areas including Castlefield Arena, canals, museums, Regents Retail Park, restaurants and cafes provide a wide range of recreational options. Within walking distance, you can reach Manchester's central business district and commercial retail areas. Manchester's famous communities and retail spaces are just a stone's throw away. From the development, you can walk to Arndale Shopping Centre and the fashionable Northern Quarter.

# 43 Potato Wharf Manchester

£1,600 Per Month

- 2nd Floor
- Close to Transport Links
- EPC Rating: B

- Close to Local Shops
- 24h Security



## APARTMENT - 2 BED

Kitchen/Living/Dining Area (max.)	5.86m x 3.97m	19'3" x 13'0"
Bedroom 1	4.56m x 2.86m	15'0" x 9'5"
Bedroom 2 (max.)	3.33m x 2.80m	10'11" x 9'2"
<b>Total floor area</b>	62 square metres	



Let **UK** Home

1/F, St James Tower 7 Charlotte  
Street  
Manchester  
M1 4DZ

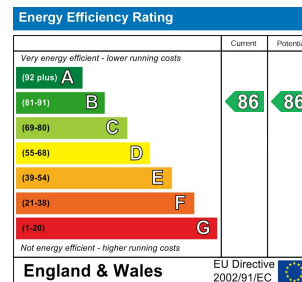
01615219812

[pmadmin@letukhome.co.uk](mailto:pmadmin@letukhome.co.uk)

**Council Tax Band: D**

**Local Authority:**

Agents Note: Whilst every care has been taken to prepare these particulars, they are for guidance purposes only. All measurements are approximate and are for general guidance purposes only and whilst every care has been taken to ensure their accuracy, they should not be relied upon and potential buyers/tenants are advised to recheck the measurements.



<https://www.letukhome.co.uk/>