



## Fulham Palace Road, SW6

### £500,000

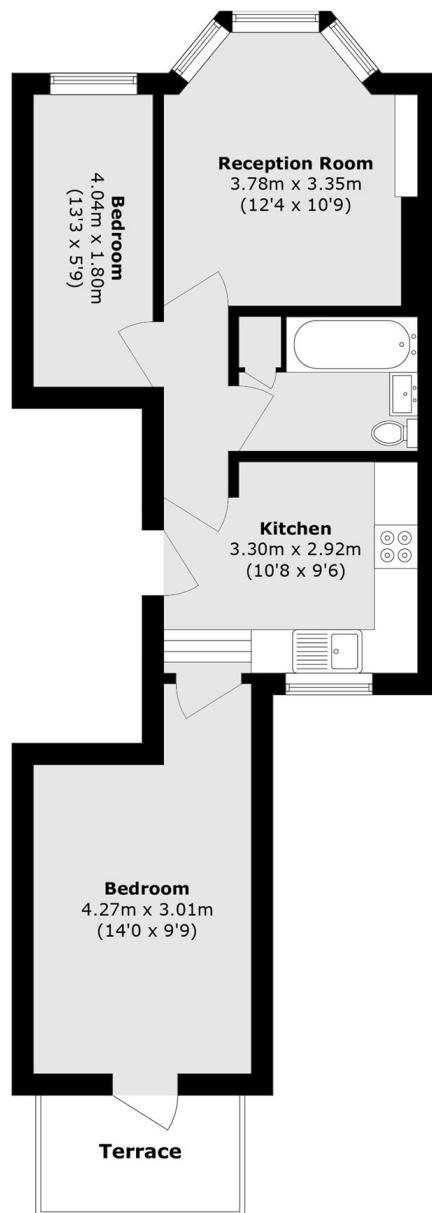
A well-configured two double bedroom apartment, situated on the first floor of this Victorian conversion with direct views over Bishops Park. The property features a separate kitchen and living space, high ceilings, and a bay window, while further benefiting from a private terrace.

Enviably located directly in front of Bishops Park and the River Thames, the flat is within close proximity to Putney Bridge and Parsons Green.

### Features

- First Floor
- Two Double Bedrooms
- Private Terrace
- Share Of Freehold
- Bay Windows
- Bishops Park

# Fulham Palace Road, London, SW6



Total area (approx.): 51.4 sq. m (553.3 sq. ft)  
Terrace area (approx.): 4.4 sq. m (47.4 sq. ft)