



## Cremorne Road, SW10

£1,150,000

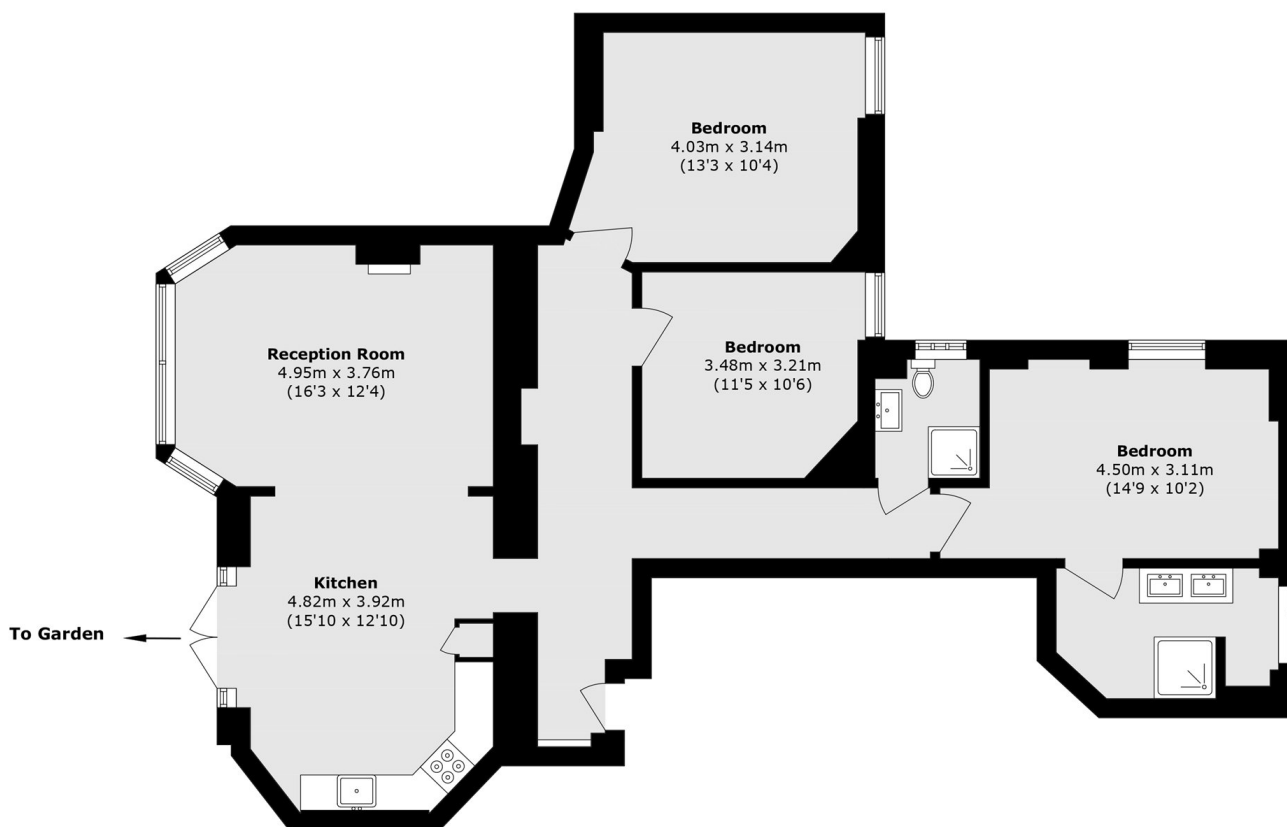
A newly refurbished apartment with direct access to a private garden. This property has three bedrooms, two bathrooms and a share of the freehold.

Cornwall Mansions is positioned moments from Chelsea Embankment, Lots Village and the King's Road. Local restaurants, boutique shops, cafés and transport links are all within walking distance.

### Features

- Share of Freehold
- Newly Refurbished
- Three Bedrooms
- Private Garden
- Lateral Apartment
- Two Bathrooms

# Cremorne Road, London, SW10



## Ground Floor

Total area (approx.): 112.8 sq. m (1214.1 sq. ft)