



Property Webb
At the HEART of your move

Queens Crescent, Livingston, EH54 8EJ

Offers Over £130,000

2 1 1



Freshly upgraded and ready to go – this 2 bedroom ground floor apartment is perfectly positioned within walking distance of Livingston North train station, making it an ideal choice for commuters, first time buyers or investors. Recently painted with new flooring throughout (excluding kitchen and bathroom), the property offers a bright lounge to the front, a practical kitchen, two bedrooms with built-in storage, and a modern bathroom. With secure communal entry and residents' parking, this is a low-maintenance home with strong rental appeal and move-in-ready convenience.

01506 637553

info@property-webb-co.uk

www.property-webb.co.uk

71 South Bridge St, Bathgate, EH48 1TJ

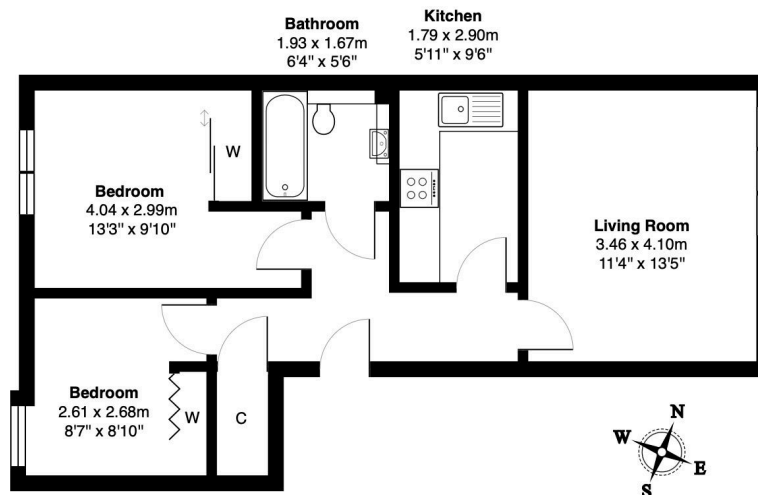


Property Webb
At the HEART of your move

Key Features

- Modern ground floor apartment
- Freshly painted and new flooring
- Spacious lounge
- Fitted kitchen
- 2 bedrooms with wardrobes
- 3 piece bathroom
- Residents parking
- Central location
- Walking distance to Livingston North train station
- Ideal first time buyer or investor

188 Queens Crescent, Livingston, EH54 8EJ



Ground Floor

Total Area: 51.2 m² ... 551 ft²

All measurements are approximate and for display purposes only

01506 637553

info@property-webb-co.uk

www.property-webb.co.uk

71 South Bridge St, Bathgate, EH48 1TJ