



Western Drive, £340,000

- THREE-BEDROOM FAMILY HOME
- ADDITIONAL LOFT ROOM
- LARGE DRIVEWAY
- FAMILY FRIENDLY GARDEN
- DETACHED GARAGE STYLED AS HOME GYM
- EPC Rating: C



 3  1  1



About the property

This well-presented three-bedroom semi-detached family home is ideally located in the popular area of Gabalfa, offering generous and versatile living space in a highly convenient setting.

Perfect for growing families, the property features a useful loft room that lends itself well to a playroom, homework space, or additional bedroom, while the garage—currently used as a home gym— could easily be adapted to suit family needs such as storage, bikes, or a workshop.

The ground floor benefits from a downstairs WC, reception room to the front and kitchen/diner with a view of the enclosed rear garden ideal for busy family life, providing a safe and enjoyable space.

The spacious driveway with parking for up to four cars ensures stress-free parking for multiple family vehicles or visiting guests.

The property is ideally situated for families, with easy access to Cardiff City Centre, the University Hospital of Wales, local shops, parks, and excellent transport links. Nearby amenities and schools make this an excellent long-term home in a friendly residential area.

A fantastic opportunity to purchase a comfortable and well-located family home that offers both space and convenience.



Accommodation

Lounge

14' 1" x 11' 6" (4.29m x 3.51m)
Spacious lounge designed for comfort and socialising with seating and dining space.

Kitchen

17' 9" x 8' 3" (5.41m x 2.51m)
Traditional cabinetry offering generous storage, breakfast table comfortably seating two and french doors leading to the garden.

W.C

Accessible off the kitchen with a side lobby and access to the driveway.

Bedroom 1

14' 5" x 9' 10" (4.39m x 3.00m)

Bedroom 2

11' 6" x 9' 10" (3.51m x 3.00m)

Bedroom 3

9' 6" x 8' 2" (2.90m x 2.49m)

Bathroom

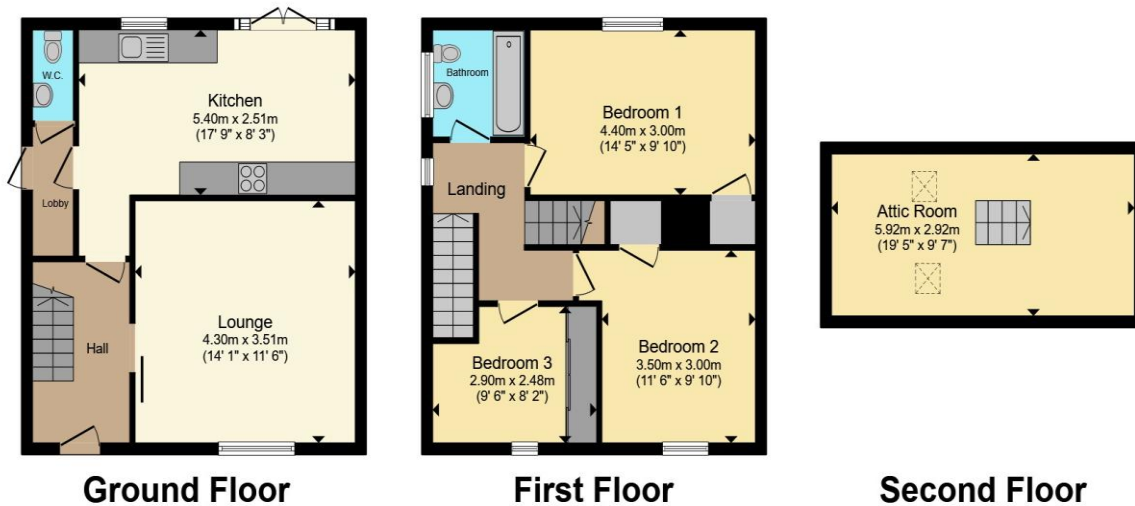
Loft Room

19' 5" x 9' 7" (5.92m x 2.92m)

02920 612328

whitchurch@peteralan.co.uk

Floorplan



Total floor area 111.9 m² (1,204 sq.ft.) approx

This floor plan is for illustrative purposes only. It is not drawn to scale. Any measurements, floor areas (including any total floor area), openings and orientation are approximate. No details are guaranteed, they cannot be relied upon for any purpose and they do not form part of any agreement. No liability is taken for any error, omission or misstatement. A party must rely upon its own inspection(s). Powered by www.propertybox.io



Important Information

Note while we endeavour to make our sales details accurate and reliable, if there is any point which is of particular interest to you, please contact the office and we will be pleased to confirm the position for you. We have not personally tested any apparatus, equipment, fixtures, fittings or services and cannot verify they are in working order or fit for their purposes. Nothing in these particulars is intended to indicate that carpets or curtains, furnishings or fittings, electrical goods (whether wired or not). Gas fires or light fittings or any other fixtures not expressly included form part of the property offered for sale. This computer generated Floorplan, if applicable, is intended as a general guide to the layout and design of the property. It is not to scale and should not be relied upon for dimensions. Tenure: We cannot confirm the tenure of the property as we have not had access to the legal documents. The buyer is advised to obtain verification from their solicitor or surveyor.

Peter Alan Limited is registered in England and Wales under company number 2073153, Registered Office is Cumbria House, 16-20 Hockliffe Street, Leighton Buzzard, Bedfordshire, LU7 1GN. VAT Registration Number is 500 2481 05. For activities relating to regulated mortgages and non-investment insurance contracts, Peter Alan Limited is an appointed representative of Connells Limited which is authorised and regulated by the Financial Conduct Authority. Connells Limited's Financial Services Register number is 302221. Most buy-to-let

