



Hans Place
Knightsbridge, SW1X

CHESTERTONS





Beautifully presented second-floor apartment set within a charming period red-brick development, ideally situated on one of Knightsbridge's most prestigious garden squares, just moments from Harrods.

This elegant apartment offers a modern and contemporary interior, featuring air-conditioning, generous built-in storage, including ample wardrobe space. The property benefits from well-proportioned living accommodation, combining classic period character with modern finishes.

Located in an exceptional Knightsbridge setting, the apartment enjoys immediate access to world-class shopping, dining, and transport links, making it perfectly suited for both professionals and those seeking a prime central London residence.

- Short Let
- Situated on a beautiful garden square
- Air-conditioning
- Moments from Harrods
- Built-in storage

£4,225 pcm

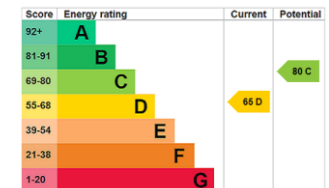
Additional tenant charges apply (fees apply to non-AST tenancies only)

Tenancy Agreement Fee: £300

References per Tenant/Guarantor: £60

Inventory check (approx. £100 – £250 inc. VAT)

chestertons.co.uk/property-to-rent/applicable-fees



Minimum Term: 1 months
Deposit Required: Ask Agent
Local Authority: Royal Borough of Kensington & Chelsea
Council Tax Band: G
EPC Rating: D
Furnished

Chestertons Knightsbridge & Belgravia Lettings

31 Lowndes Street

London

SW1X 9HX

knightsbridgelettingsusers@chestertons.co.uk

02072353530

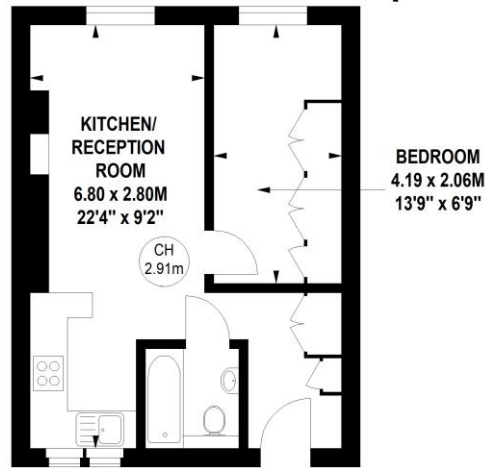
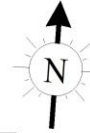
chestertons.co.uk

Hans Place, SW1X

Approximate gross internal area

34.00 sq m / 366 sq ft

Key :
CH - Ceiling Height



Second Floor

The floor plan is not to scale and measurements and areas shown are approximate and therefore should be used for illustrative purposes only. The plan has been prepared in accordance with the RICS code of Measuring Practice and whilst we have confidence in the information produced, it must not be relied on. If there is any aspect of particular importance, you should carry out or commission your own inspection of the property.
Copyright of FeaturePRO.

