



Rosary Gardens, SW7

£830 Per week

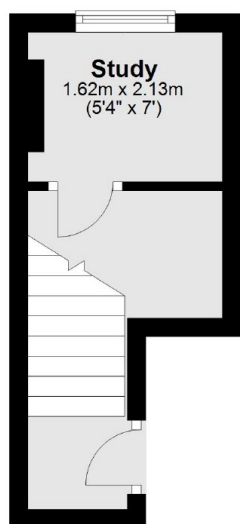
A well-presented three bedrooms apartment arranged over the upper floors of a red-brick Victorian conversion, set across three levels and offering access to the rooftop.

Rosary Gardens is conveniently located close to the shops and restaurants on Gloucester Road, including Waitrose, Sainsbury's, and Prêt. Gloucester Road Underground station is the nearest station.

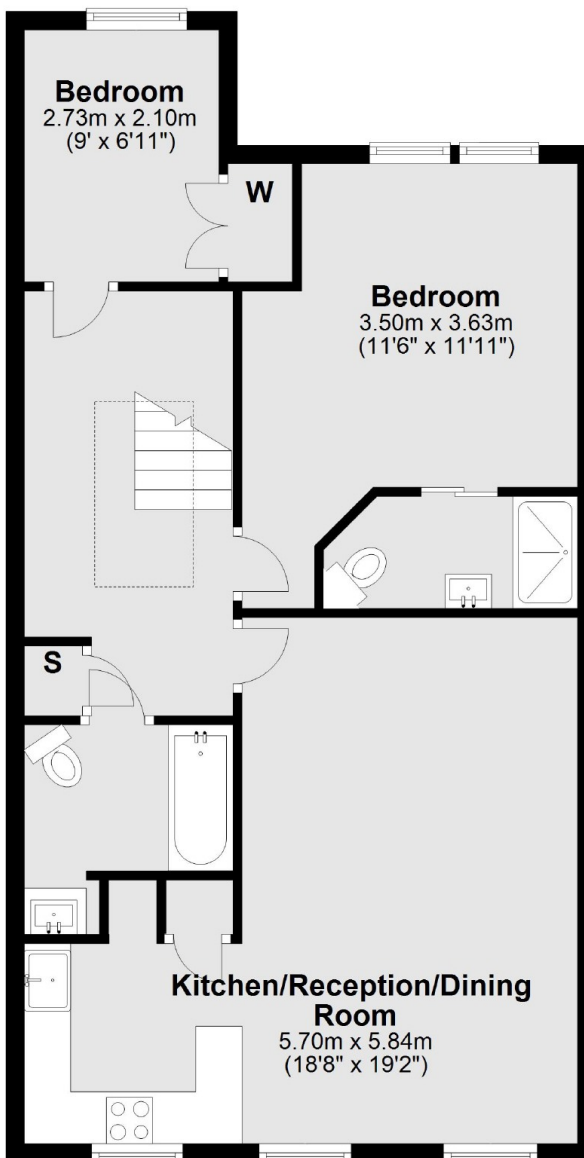
Features

- Three Bedrooms
- Two Bathrooms
- Wood Floors
- Split Level
- Modern
- Access To Roof Top

Rosary Gardens, London, SW7



Second Floor



Third Floor

Total area: approx. 75.1 sq. metres (808.7 sq. feet)