

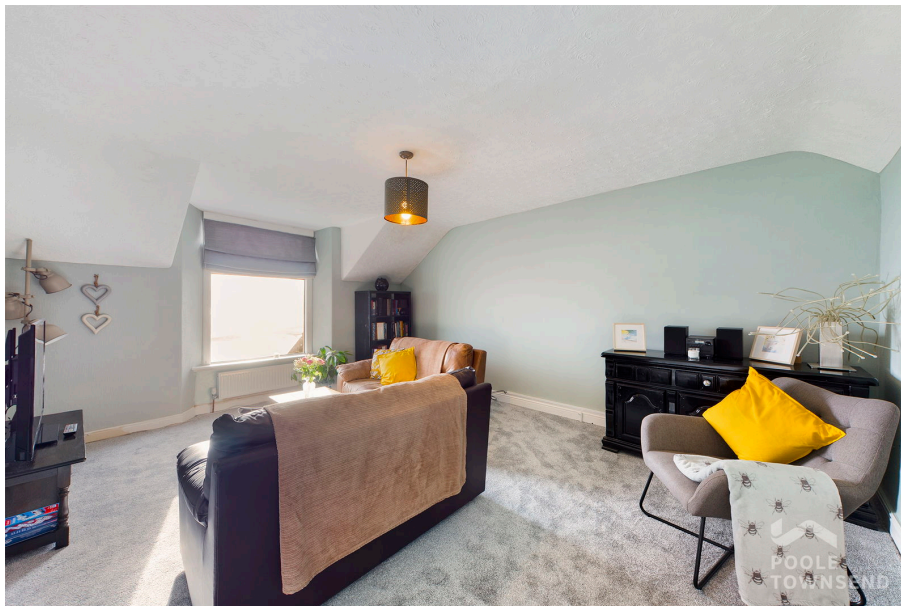


**POOLE  
TOWNSEND**

# Church Hill, Grange-over-Sands

£185,000

3 1 1

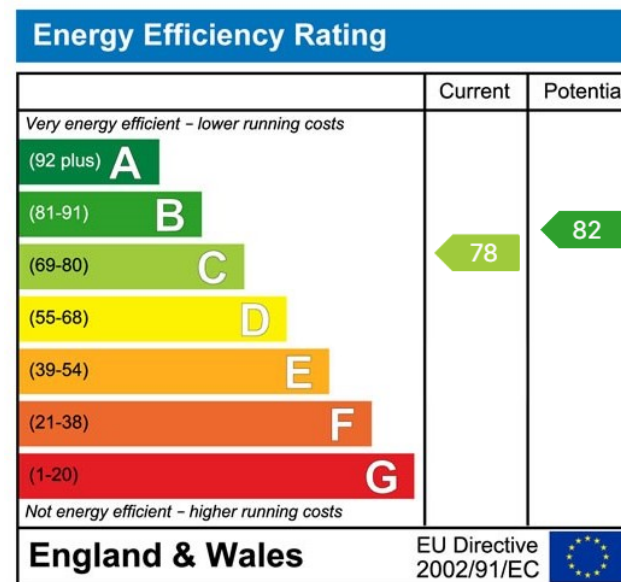


- Fantastic bay views
- Impressive kitchen
- Own entrance
- Boarded loftspace
- Council tax band B
- Central location
- 3 bedrooms
- Leasehold
- Eat in kitchen/diner





An immaculate and stylishly presented top floor apartment, centrally located within the Edwardian coastal town of Grange over Sands. The apartment has been beautifully presented with modern décor and contemporary fixtures and fittings. Enjoying views to Morecambe Bay and within walking distance of local amenities and transport links, this property will appeal to those seeking a primary residence or second home.



Visit us at  
[www.pooletownsend.co.uk](http://www.pooletownsend.co.uk)  
[enquiries@pooletownsend.co.uk](mailto:enquiries@pooletownsend.co.uk)

We are open  
 Monday – Friday 9.00 – 5.00  
 Saturday 9.00 – 1.00

Barrow 01229 811811  
 Ulverston 01229 588111  
 Grange 015395 33316  
 Kendal 01539 734455  
 Milnthorpe 015395 62044