



**Chiswick Drive, LOUGHBOROUGH**

**welcome to**

## **Chiswick Drive, LOUGHBOROUGH**

A beautifully updated two-bedroom mid-terrace home featuring an open-plan lounge/dining space, modern kitchen, stylish bathroom, landscaped garden with pergola seating area, and ample driveway parking. Move-in ready and finished to a high standard throughout.

### **Entrance**

A welcoming entrance leading directly into the open-plan living area and provides access to the stairs rising to the first floor.

### **Lounge Diner**

23' 11" x 10' 10" ( 7.29m x 3.30m )

An open-plan living and dining space dual-aspect windows, laminate flooring, radiator and access through to the kitchen. Sliding patio doors open onto the rear garden, making this an ideal space for entertaining.

### **Kitchen**

7' 10" x 5' 11" ( 2.39m x 1.80m )

The kitchen features a range of wall and base units, integrated oven, electric hob, and space for appliances, stainless steel sink with drainer and a window overlooks the garden.

### **First Floor Landing**

The first-floor landing has stairs rising from the ground floor, carpeted flooring and doors to all first-floor rooms.

### **Bedroom One**

14' 1" x 7' 9" ( 4.29m x 2.36m )

Bedroom one offers two double glazed windows to the front, laminate flooring and a radiator.

### **Bedroom Two**

15' 11" x 6' 10" ( 4.85m x 2.08m )

Bedroom two offers a double-glazed window to the rear, laminate flooring and a radiator.

### **Bathroom**

A newly updated modern bathroom with full-size bath and handheld shower hose, wall-mounted vanity unit, contemporary tiling, heated towel rail, and window to the rear. Finished to a high standard with a clean, modern look.

### **Outside**

Front - a generous gravel driveway providing ample off-road parking. Set back from the road for added privacy. Rear Garden - a standout feature of the property — this landscaped garden offers a stylish, low-maintenance outdoor space. The wooden pergola seating area provides covered relaxation or entertaining space, complemented by tiered levels, planters, and attractive fencing for privacy and ambience.







***view this property online*** [williamhbrown.co.uk/Property/LBH115665](http://williamhbrown.co.uk/Property/LBH115665)



welcome to

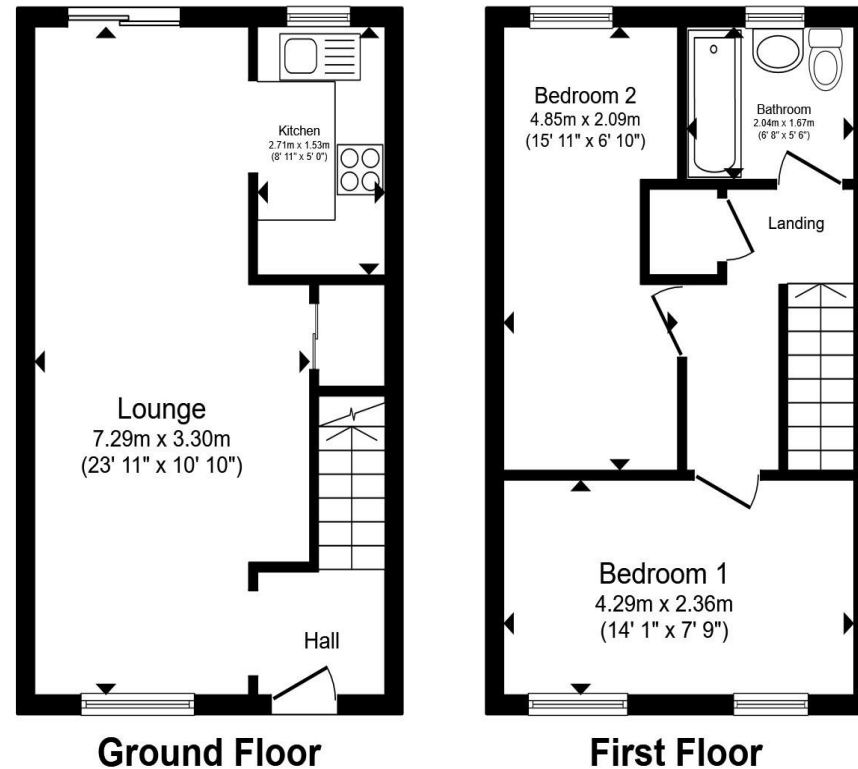
## Chiswick Drive, LOUGHBOROUGH

- Stylishly presented two-bedroom mid-terrace home
- Open-plan lounge and dining area
- White-gloss kitchen with wooden worktops
- Contemporary bathroom
- Landscaped rear garden with pergola and seating deck

Tenure: Freehold EPC Rating: Awaited

Council Tax Band: B

**£225,000**



Total floor area 61.2 m<sup>2</sup> (659 sq.ft.) approx

This floor plan is for illustrative purposes only. It is not drawn to scale. Any measurements, floor areas (including any total floor area), openings and orientation are approximate. No details are guaranteed, they cannot be relied upon for any purpose and they do not form part of any agreement. No liability is taken for any error, omission or misstatement. A party must rely upon its own inspection(s). Powered by [www.propertybox.io](http://www.propertybox.io)



**view this property online** [williamhbrown.co.uk/Property/LBH115665](http://williamhbrown.co.uk/Property/LBH115665)



Property Ref:  
LBH115665 - 0003

1. MONEY LAUNDERING REGULATIONS Intending purchasers will be asked to produce identification documentation at a later stage and we would ask for your co-operation in order that there is no delay in agreeing the sale. 2. These particulars do not constitute part or all of an offer or contract. 3. The measurements indicated are supplied for guidance only and as such must be considered incorrect. Potential buyers are advised to recheck measurements before committing to any expense. 4. We have not tested any apparatus, equipment, fixtures or services and it is in the buyers interest to check the working condition of any appliances. 5. Where an EPC, or a Home Report (Scotland only) is held for this property, it is available for inspection at the branch by appointment. If you require a printed version of a Home Report, you will need to pay a reasonable production charge reflecting printing and other costs. 6. We are not able to offer an opinion either written or verbal on the content of these reports and this must be obtained from your legal representative. 7. Whilst we take care in preparing these reports, a buyer should ensure that his/her legal representative confirms as soon as possible all matters relating to title including the extent and boundaries of the property and other important matters before exchange of contracts.

William H Brown is a trading name of Sequence (UK) Limited which is registered in England and Wales under company number 4268443, Registered Office is Cumbria House, 16-20 Hockliffe Street, Leighton Buzzard, Bedfordshire, LU7 1GN. VAT Registration Number is 500 2481 05.

  
william h brown



**01509 214686**



[loughborough@williamhbrown.co.uk](mailto:loughborough@williamhbrown.co.uk)



22-23 Swan Street, LOUGHBOROUGH,  
Leicestershire, LE11 5BL



**[williamhbrown.co.uk](http://williamhbrown.co.uk)**