



Flat - Council Tax Band B - EPC Rating: B

224 HEMISPHERE APARTMENTS, 24 THE ASHES, EDGBASTON, BIRMINGHAM, B5 7SB PCM

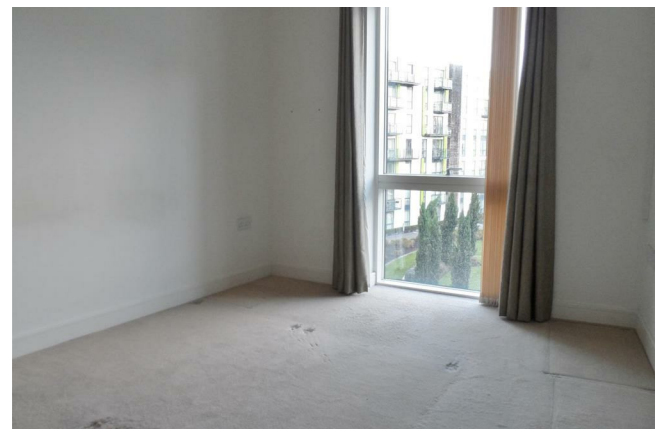
£900 PCM



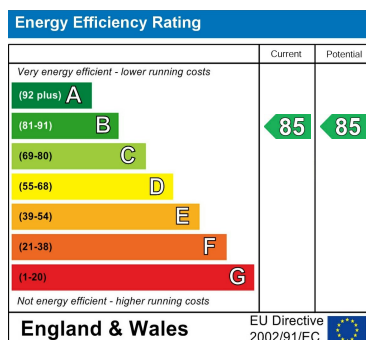
224 HEMISPHERE APARTMENTS, 24 THE ASHES, EDGBASTON, BIRMINGHAM, B5 7SB

****AVAILABLE 16TH JULY - RENT INCLUDES WATER RATES - 24HR CONCIERGE - VIDEO TOUR AVAILABLE**

**** This furnished fourth floor apartment is well situated in this modern development next to Cannon Hill Park and opposite Edgbaston cricket ground. Excellent links to the city centre, which is less than 2 miles away. comprises: Entrance hallway, open plan lounge/kitchen. The kitchen incorporates integrated fridgefreezer, electric hob and oven, dishwasher and washer dryer. Good sized double bedroom with fitted wardrobes. Spacious and beautifully fitted bathroom with large chrome-headed shower over bath. Modern underfloor electric heating throughout. Secure exit/entry system. One allocated parking spot. ****Rent includes water rates****. Available 16TH July. Alto Ref 19127779**



Energy Performance Graph



Contact us:

Phone: 0121 442 2049

Email: sales@nicholasgeorge.co.uk

Tenure:

We understand the property is with XXX years remaining but interested parties should obtain verification from their own solicitor.

Fees:

We have been informed that annual service charge is £XXX and annual ground rent is £XXX.

Agents Note: Whilst every care has been taken to prepare these particulars, they are for guidance purposes only. All measurements are approximate and are for general guidance purposes only and whilst every care has been taken to ensure their accuracy, they should not be relied upon and potential buyers are advised to recheck the measurements.

Council tax band B.

