



**12 Burway Close**  
South Croydon, CR2 7AY

**£147,000**



## 12 Burway Close

South Croydon, CR2 7AY

**\*\*Shared Ownership - 70%\*\***

This well presented apartment offers a comfortable, easy living space in a convenient South Croydon location, just 0.7 miles from South Croydon Station. Ideal for first time buyers or anyone seeking a simple, move-in ready home, it combines modern features with low maintenance living.

Inside, the property feels bright and welcoming, with double glazing throughout and gas central heating providing year round comfort. The layout is practical and well arranged, offering a good sized living area, fitted kitchen and a calm, cosy bedroom that makes an ideal retreat at the end of the day. Being on the top floor adds an enhanced sense of privacy.

The building benefits from an entryphone system, and residents can also enjoy allocated parking and a communal garden. With everything well cared for and ready to go, this is very much a turn key home.

Providing comfort, convenience and great connections into town, this South Croydon apartment is a fantastic opportunity for those wanting a straightforward, well maintained home in a popular area. If you would like to arrange a viewing, we would be delighted to show you around.



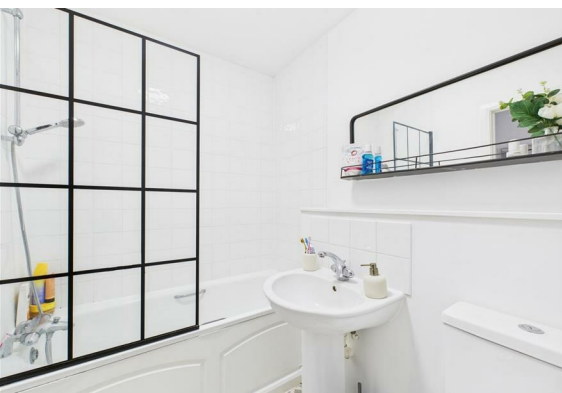


Entrance Hall  
12'2" x 3'11" (3.71m x 1.21m)

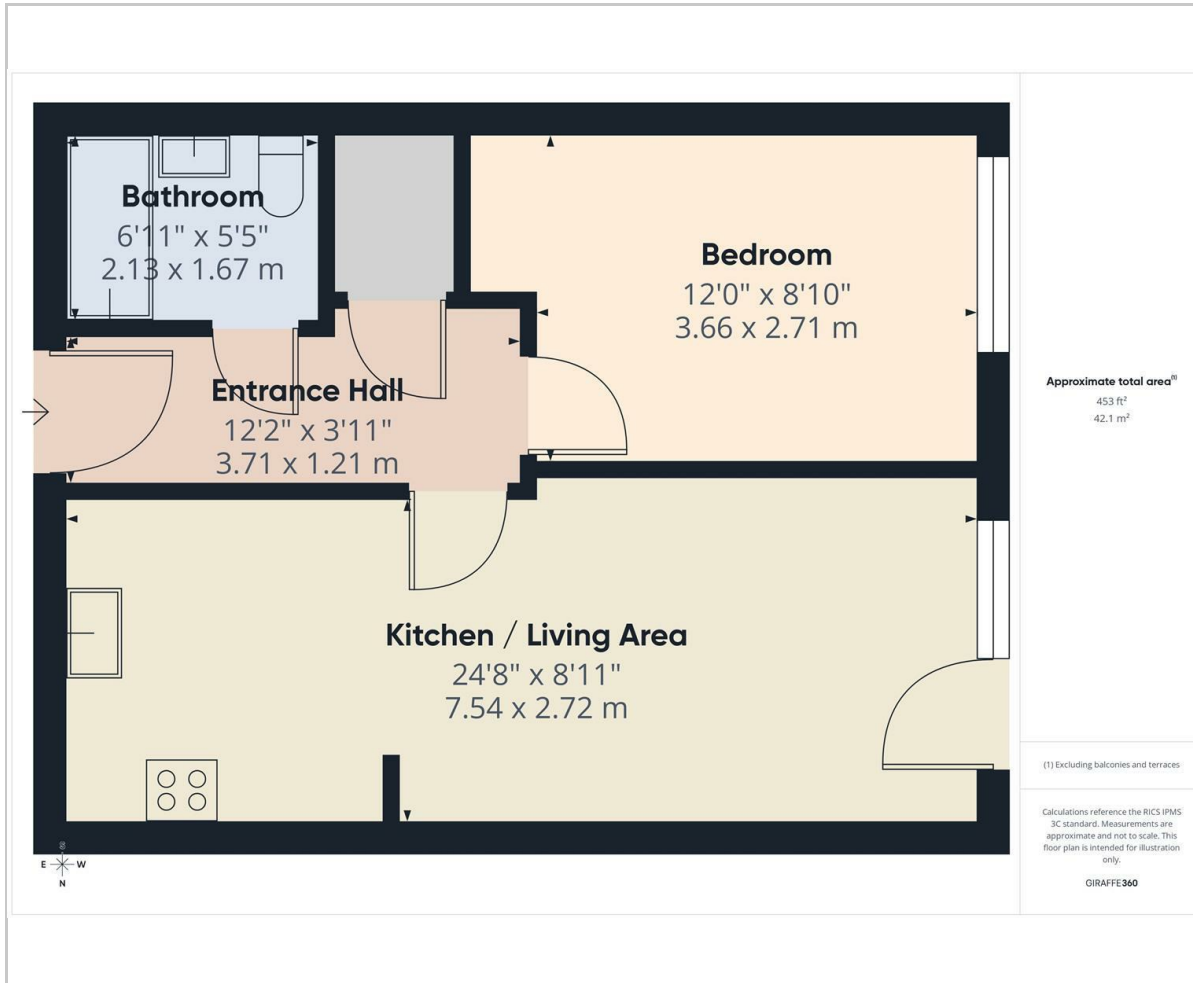
Kitchen/Living Area  
24'8" x 8'11" (7.54m x 2.72m)

Bedroom  
12'0" x 8'10" (3.66m x 2.71m)

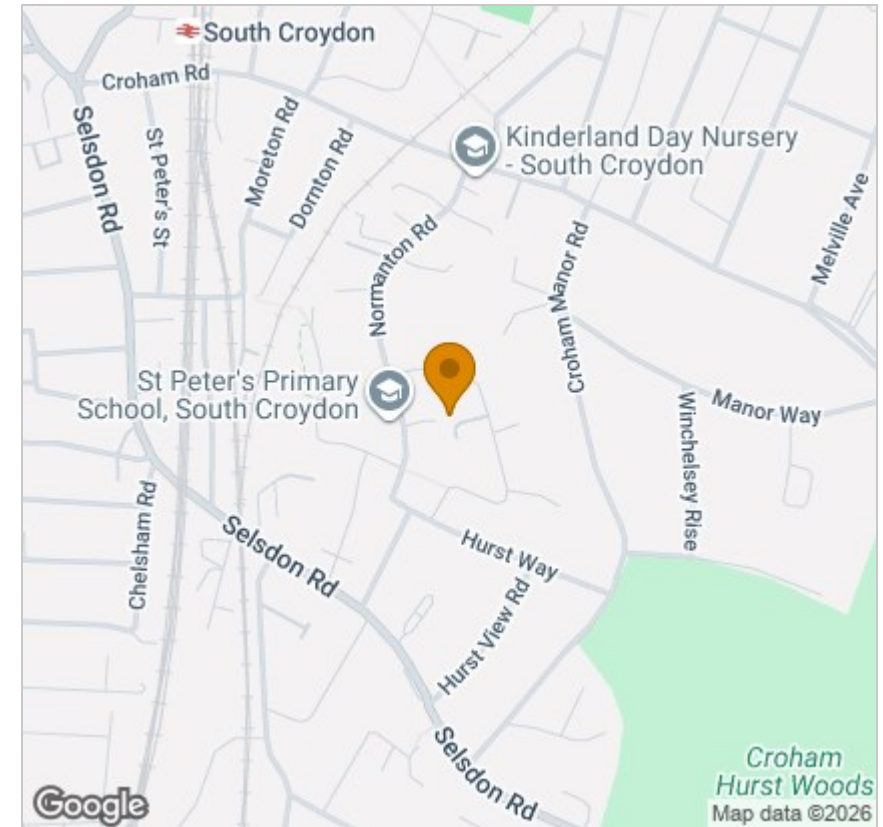
Bathroom  
6'11" x 5'5" (2.13m x 1.67m)



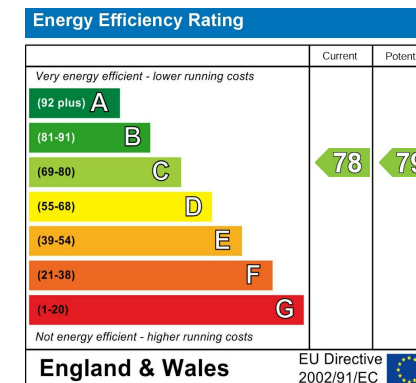
## Floor Plan



## Area Map



## Energy Efficiency Graph



## Viewing

Please contact our Coulsdon Sales Office on 0208 763 8878 if you wish to arrange a viewing appointment for this property or require further information.



147 Brighton Road,  
Coulsdon,  
Surrey  
CR5 2NJ  
Tel: 020 8763 8878  
Email: sales@danieladamsestateagents.co.uk  
www.danieladamsestateagents.co.uk