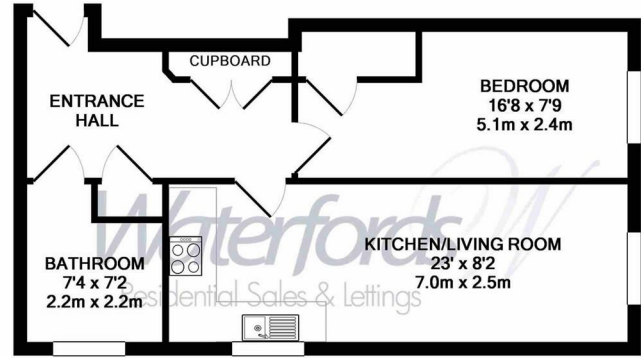




Parkgate House | Park Street | Camberley | GU15 3PQ

£1,100 PCM

*Waterfords* W  
Residential Sales & Lettings



Whilst every attempt has been made to ensure the accuracy of the floor plan contained here, measurements of doors, windows, rooms and any other items are approximate and no responsibility is taken for any error, omission, or mis-statement. This plan is for illustrative purposes only and should be used as such by any prospective purchaser. The services, systems and appliances shown have not been tested and no guarantee as to their operability or efficiency can be given  
Made with Metropix ©2019

Energy Efficiency Rating		Current	Potential
Very energy efficient - lower running costs			
(92 plus) A			
(81-91) B		83	83
(69-80) C			
(55-68) D			
(39-54) E			
(21-38) F			
(1-20) G			
Not energy efficient - higher running costs			
England & Wales	EU Directive 2002/91/EC		



## Description

A well-presented one-bedroom apartment situated within the popular Parkgate House development in the heart of Camberley. Offered to the market unfurnished and available immediately, the property benefits from spacious and modern accommodation, making it ideal for a single professional or couple. Conveniently located within walking distance of Camberley town centre, excellent transport links, shops, restaurants and local amenities.

## Key features

- Two Centre
- Luxury Fitted Kitchen with Zanussi Appliances
- Underfloor Heated Throughout
- Minimum Term 12 Month Let
- Fresh Redecoration
- One Bedroom Apartment
- Video Entry System
- Available Now Unfurnished
- Council Tax Band B
- No Parking



35 Plough Road  
Hampshire  
GU46 7UW  
01276 903006

surreylettings@waterfords.co.uk  
<https://www.waterfords.co.uk/>