

# Castles

OFFERS IN EXCESS OF

**£230,000**

**Barrowfield Close**

London, N9 0HA



## PROPERTY SUMMARY

Castles are delighted to present this well maintained 2nd floor one bedroom flat; within half a mile of Edmonton Green shopping center and walking distance to Edmonton Green Rail station. The flat benefits from a 3 piece bathroom suite, Modern kitchen and bathroom, gas central heating and can be offered on a chain free basis.

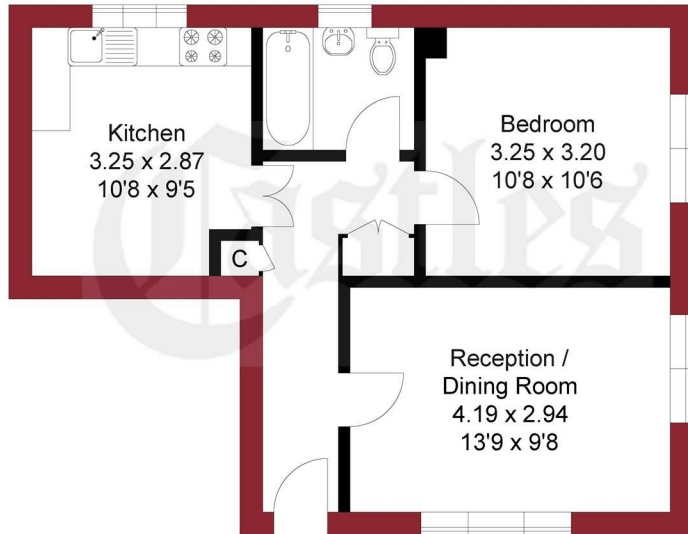








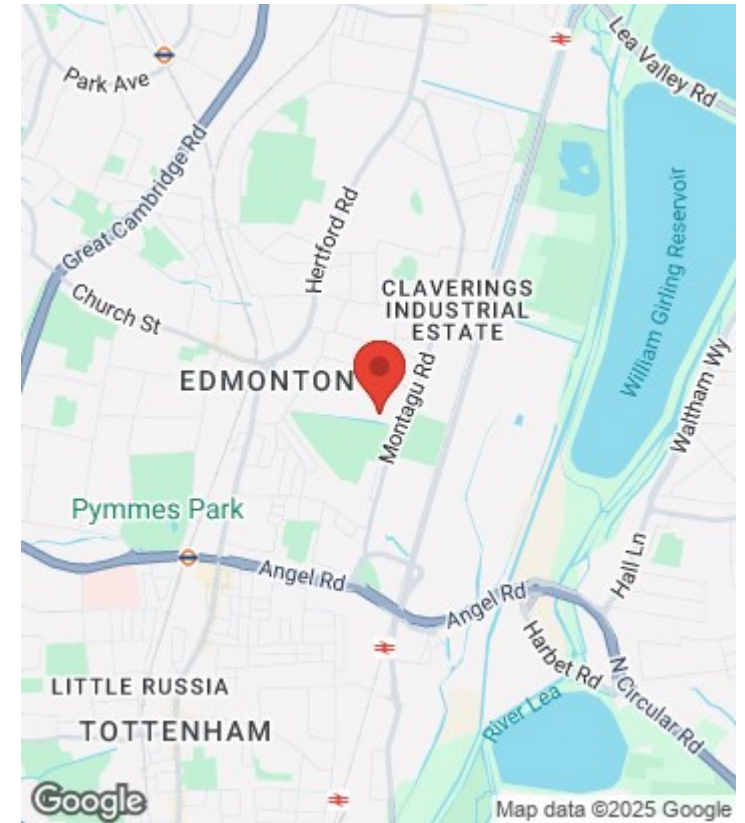
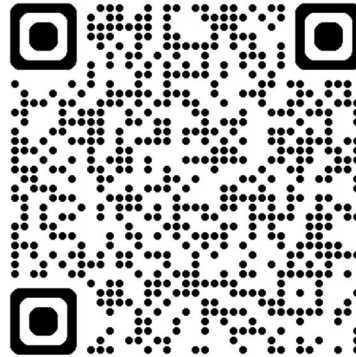
APPROXIMATE GROSS INTERNAL AREA  
43.61 sqm / 469.41 sqft



SECOND FLOOR

THIS PLAN IS FOR ILLUSTRATION ONLY AND MAY NOT BE  
REPRESENTATIVE OF THE PROPERTY

For a guide to the area  
please scan this code for  
more information



House

Leasehold

**Council:**

**Council Tax Band: B**

Agents Note: Whilst every care has been taken to prepare these particulars, they are for guidance purposes only. All measurements are approximate and are for general guidance purposes only and whilst every care has been taken to ensure their accuracy, they should not be relied upon and potential buyers/tenants are advised to recheck the measurements



#### OFFICE ADDRESS

438 Hertford Road  
Edmonton  
London  
N9 8AB

#### OFFICE DETAILS

020 8804 8123  
edmonton@castles.london  
<https://www.castles.london/>

Energy Efficiency Rating	
Current	Potential
Very energy efficient - lower running costs	
A (92-101)	
B (81-91)	
C (69-80)	
D (55-68)	
E (39-54)	
F (21-38)	
G (1-20)	
Not energy efficient - higher running costs	
EU Directive 2002/91/EC	
England & Wales	