

Colin Dean Residential

in partnership with Dexters



Lange Road, HA2

£3,000 pcm

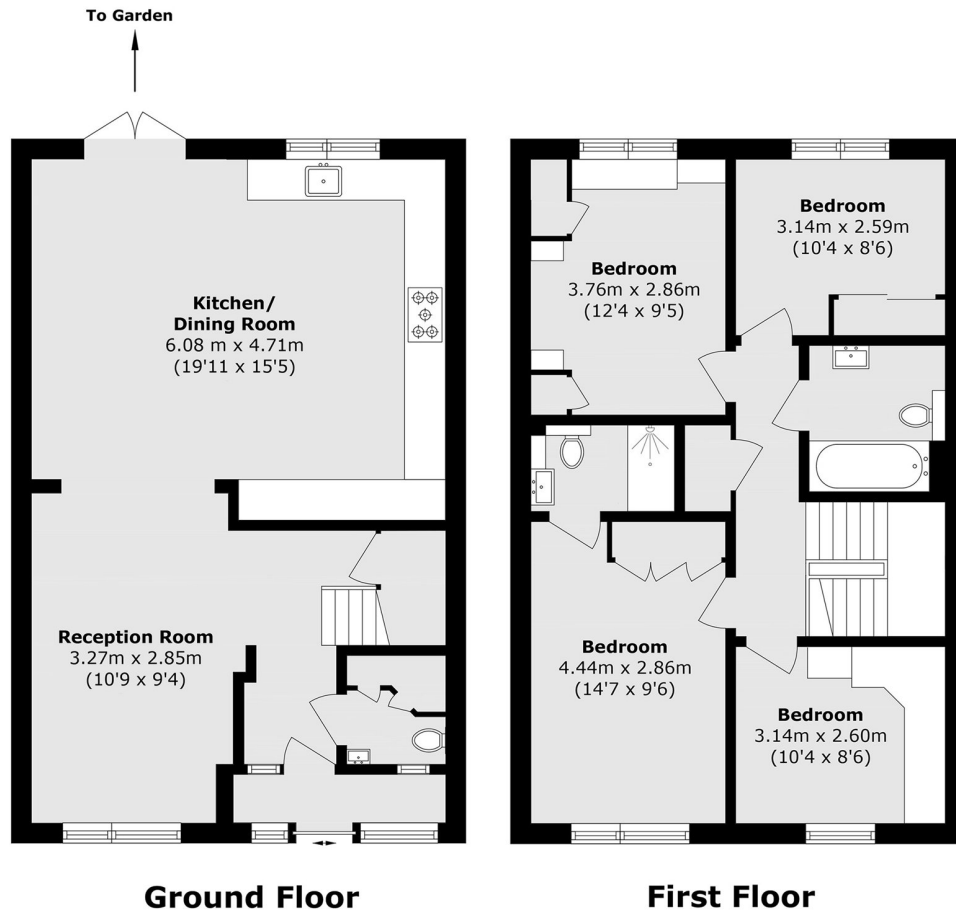
This stunning four bedroom terraced townhouse, spread across two floors, offers the perfect combination of elegance and practicality. Featuring three stylish bathrooms, including an en-suite and a convenient downstairs W/C. The kitchen is fully quipped with modern fitted appliances and the living reception is spacious with glassed doors leading out onto its own private rear garden. Externally there are two allocated parking spaces available. This home is ideal for modern family living. Energy Rating: B.

The property is situated in a quiet residential street with local shops, bus stops and popular schools within close proximity. Headstone Lane Rail Station (Overground) is 0.7 miles away, while Harrow and Wealdstone station is 0.9 miles away, giving you access to Overground and Bakerloo lines.

- Four Bedrooms • Two Bathrooms • Downstairs WC •
- Separate Kitchen with Modern Integrated Appliances • Private rear Garden • Allocated parking spaces •

Colin Dean Residential

in partnership with Dexters



Ground Floor

First Floor

Total area (approx.): 118.8 sq. m (1278.7 sq. ft)

Colin Dean Residential
350 Pinner Road,
Harrow, HA1 4LB
020 8515 7929
daniel.murray@colindean.com

Energy Rating: B We aim to make our particulars both accurate and reliable. However they are not guaranteed; nor do they form part of an offer or contract. If you require clarification on any points then please contact us, especially if you're travelling some distance to view. Please note that appliances and heating systems have not been tested and therefore no warranties can be given as to their good working order.