



1 Cambridge Street, Manchester
Offers In Excess Of £270,000

Ascend
Built on higher standards

1 Cambridge Street, Manchester

BUY TO LET INVESTORS ONLY - Tenants Contracted Until June 2026

Situated in the heart of Manchester, within the iconic and highly sought-after One Cambridge Street development, this larger-than-average two-bedroom, two-bathroom apartment offers an exceptional living space to suit a wide range of buyers!

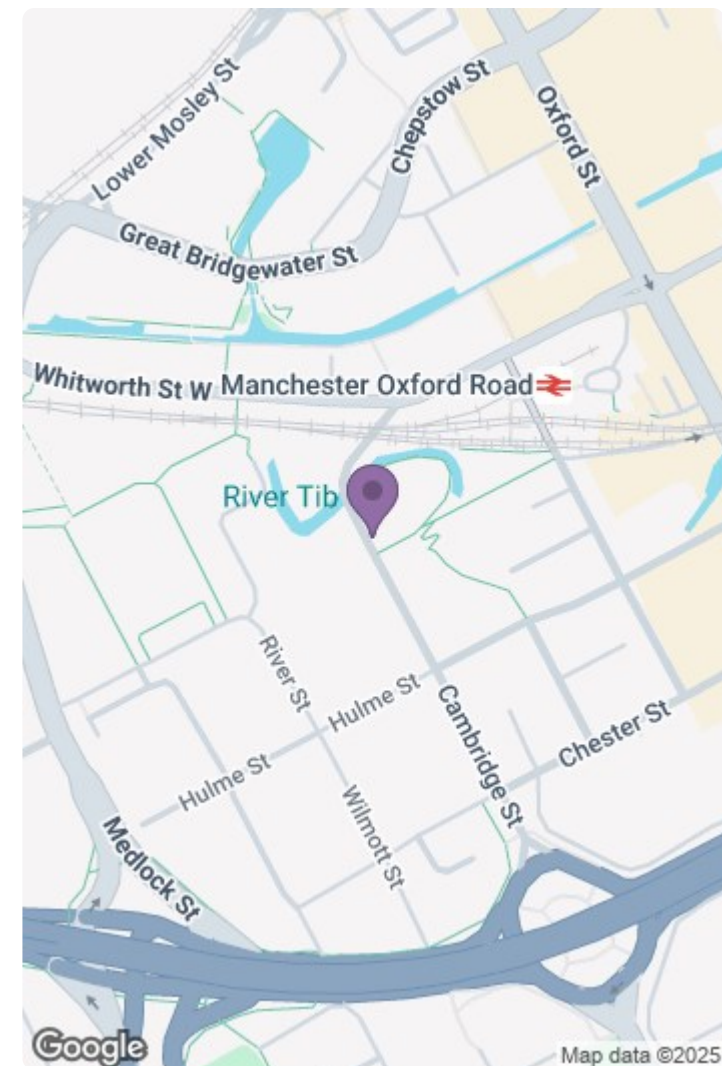
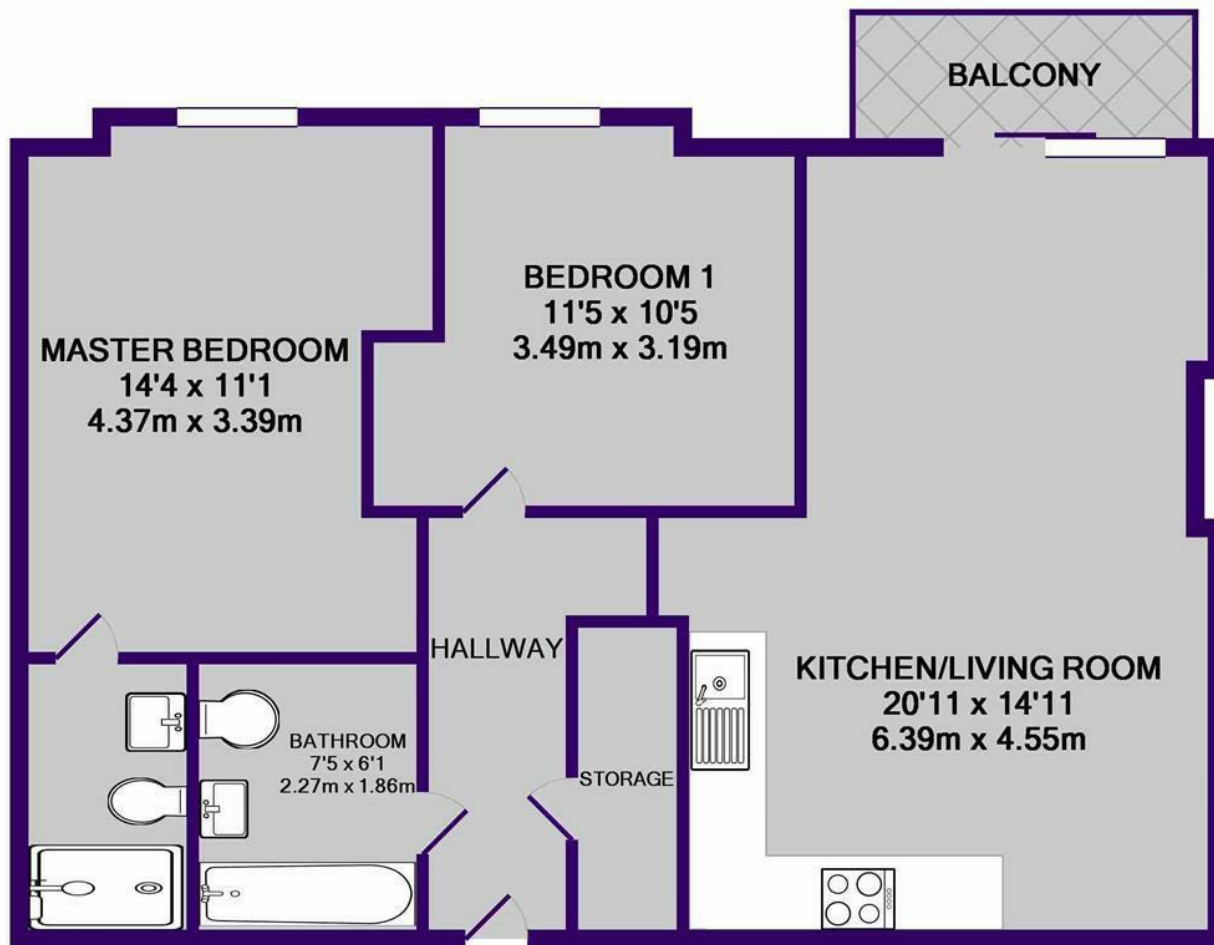
Positioned on the second floor, the apartment boasts a spacious open-plan living room and kitchen, perfect for modern living and entertaining. The living area is notably larger than average, providing ample space for both relaxation and socialising. The fully fitted kitchen is contemporary and stylish, ideal for those who enjoy cooking in a sleek, functional environment.

The property features two generously sized double bedrooms, both benefiting from natural light and ample space for furniture. The master bedroom includes an en-suite shower room for added convenience, while the main bathroom offers a modern, well-appointed suite.

With a contemporary and modern feel throughout, this apartment is the epitome of city living. The property is sold with no onward chain, providing a hassle-free purchase. Currently tenanted, it also presents an attractive investment opportunity for buy-to-let investors.



Please note that we have not tested any apparatus, equipment, fixtures, fittings or services, and so cannot verify they are in working order or fit for their purpose. Furthermore solicitors should confirm moveable items described in the sales particulars are, in fact, included in the sale since circumstances do change during marketing or negotiations. A final inspection prior to exchange of contracts is also recommended. Although we try to ensure accuracy, measurements used in this brochure may be approximate. Therefore if intending purchasers need accurate measurements to order carpeting or to ensure existing furniture will fit, they should take such measurements themselves.



TOTAL APPROX. FLOOR AREA 685 SQ.FT. (63.6 SQ.M.)

Whilst every attempt has been made to ensure the accuracy of the floor plan contained here, measurements of doors, windows, rooms and any other items are approximate and no responsibility is taken for any error, omission, or mis-statement. This plan is for illustrative purposes only and should be used as such by any prospective purchaser. The services, systems and appliances shown have not been tested and no guarantee as to their operability or efficiency can be given

Made with Metropix ©2017

