



145 Corn Street, Witney



## 145 Corn Street

Brought to market with no onward chain is this delightful two-bedroom cottage set in the heart of Witney, featuring a generous south-facing garden.

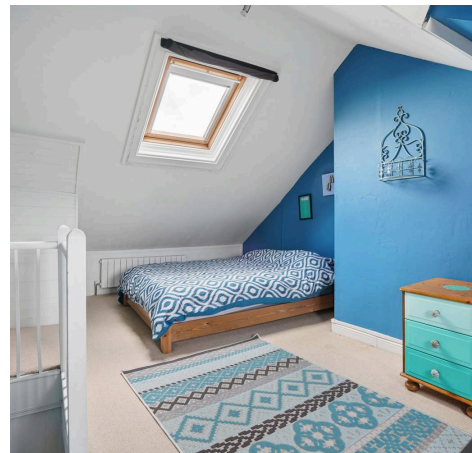
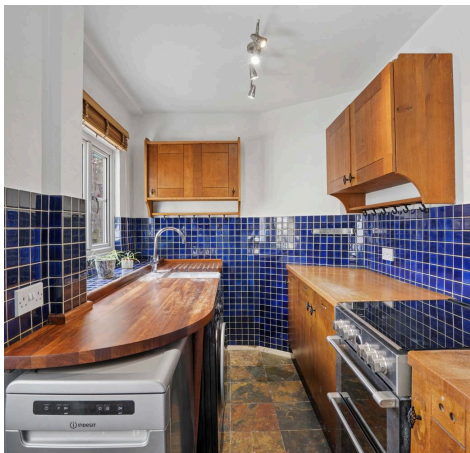
Council Tax band: B

Tenure: Freehold

EPC Energy Efficiency Rating: D

EPC Environmental Impact Rating:

- Brought to market with no onward chain.
- Charming two-bedroom cottage located in the heart of Witney, with a large south-facing garden.
- Character features include exposed stonework, wood flooring throughout and a wood-burning stove.
- First floor offers a double bedroom with a period fireplace and a modern bathroom with shower over bath.
- Master bedroom spanning the width of the top floor.
- Bright and spacious open-plan ground floor, featuring a front living area and rear dining space.



# Corn Street - Witney

Approximate Gross Internal Area = 75.0 sq m / 807 sq ft

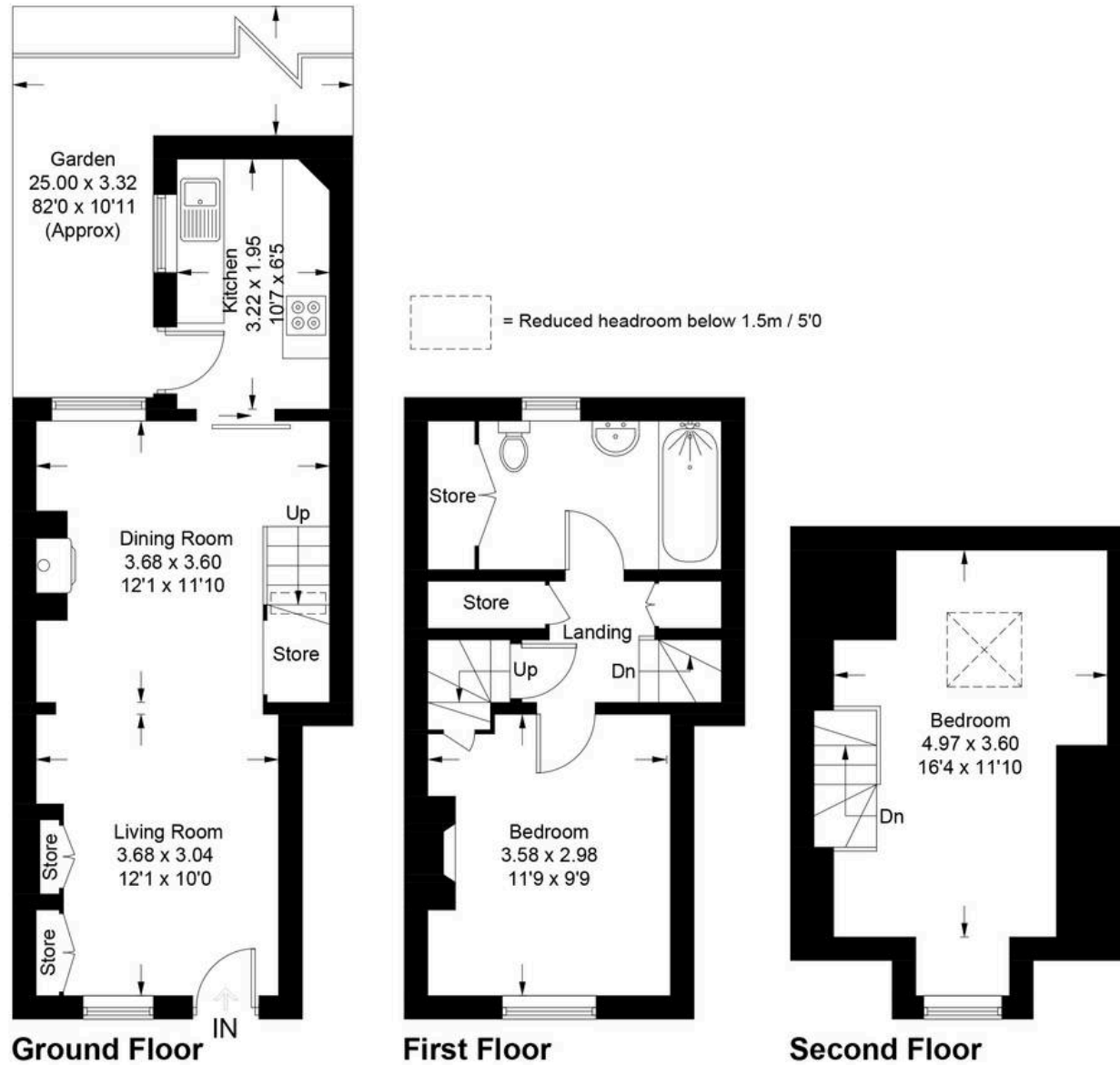


Illustration for identification purposes only, measurements are approximate, not to scale. Fourlabs.co © (ID1293581)



## Simpsons Witney Branch

4 Langdale Court Witney, Oxfordshire - OX28 6AD

01993 835030 • [witney@simpsonsproperty.com](mailto:witney@simpsonsproperty.com) • [www.simpsonsproperty.com/](http://www.simpsonsproperty.com/)