



Connells

The Heights Walsall Road
West Bromwich



Property Description

Situated in a sought-after residential location, this spacious upper floor modern apartment offers generous accommodation and excellent transport connectivity, making it an ideal purchase for first-time buyers, small families or investors alike. Offered to the market with no upward chain, the property is ready for immediate occupation while also offering further scope for personalisation and enhancement, subject to any necessary consents.

The accommodation briefly comprises an entrance hallway, a bright and comfortable lounge and a spacious kitchen diner providing ample storage and fitted appliances. You have the benefit of two double bedrooms and a separate family bathroom. The elevated position of the property further enhances its attractive street presence.

Conveniently loc



Approach

The property is approached via a car park for allocated spaces as well as visitor bays with steps up to the front communal area.

Entrance Hall

With a door leading to the communal area, window the side, access to a storage cupboard, both bedrooms, bathroom and the lounge diner.

Lounge/Diner

Lounge area: With double glazed windows to the front and side giving lots of natural light, tv point, telephone point and a fitted electric radiator.

Kitchen area: A modern fitted kitchen to comprise a range of wall and base units, fitted oven, hob and hood.

Bedroom One

With a double glazed window to the front and electric radiator.

Bedroom Two

Double glazed window to the front and an electric radiator.

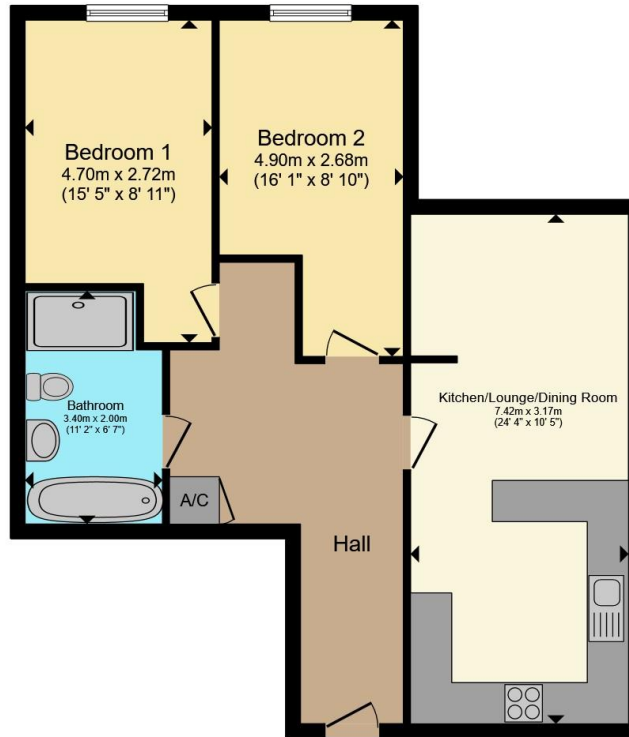
Bathroom

Featuring a fitted panel bath, fitted shower cubicle, wash hand basin and WC combination unit, ceiling spotlighting and partial tiling to splash prone areas.









Total floor area 69.0 m² (743 sq.ft.) approx

This floor plan is for illustrative purposes only. It is not drawn to scale. Any measurements, floor areas (including any total floor area), openings and orientation are approximate. No details are guaranteed, they cannot be relied upon for any purpose and they do not form part of any agreement. No liability is taken for any error, omission or misstatement. A party must rely upon its own inspection(s). Powered by www.propertybox.io



To view this property please contact Connells on

T 0121 525 1177
E westbromwich@connells.co.uk

3 Astle Park
 WEST BROMWICH B70 8NS

EPC Rating: B Council Tax Band: B

Service Charge: Ask Agent

Ground Rent: Ask Agent

Tenure: Leasehold

view this property online connells.co.uk/Property/WBW311526

This is a Leasehold property. We are awaiting further details about the Term of the lease. For further information please contact the branch. Please note additional fees could be incurred for items such as Leasehold packs.



1. MONEY LAUNDERING REGULATIONS Intending purchasers will be asked to produce identification documentation at a later stage and we would ask for your co-operation in order that there will be no delay in agreeing the sale. 2. These particulars do not constitute part or all of an offer or contract. 3. The measurements indicated are supplied for guidance only and as such must be considered incorrect. Potential buyers are advised to recheck measurements before committing to any expense. 4. We have not tested any apparatus, equipment, fixtures, fittings or services and it is in the buyers interest to check the working condition of any appliances.

Connells Residential is registered in England and Wales under company number 1489613, Registered Office is Cumbria House, 16-20 Hockliffe Street, Leighton Buzzard, Bedfordshire, LU7 1GN. VAT Registration Number is 500 2481 05.

See all our properties at www.connells.co.uk | www.rightmove.co.uk | www.zoopla.co.uk

Property Ref: WBW311526 - 0002