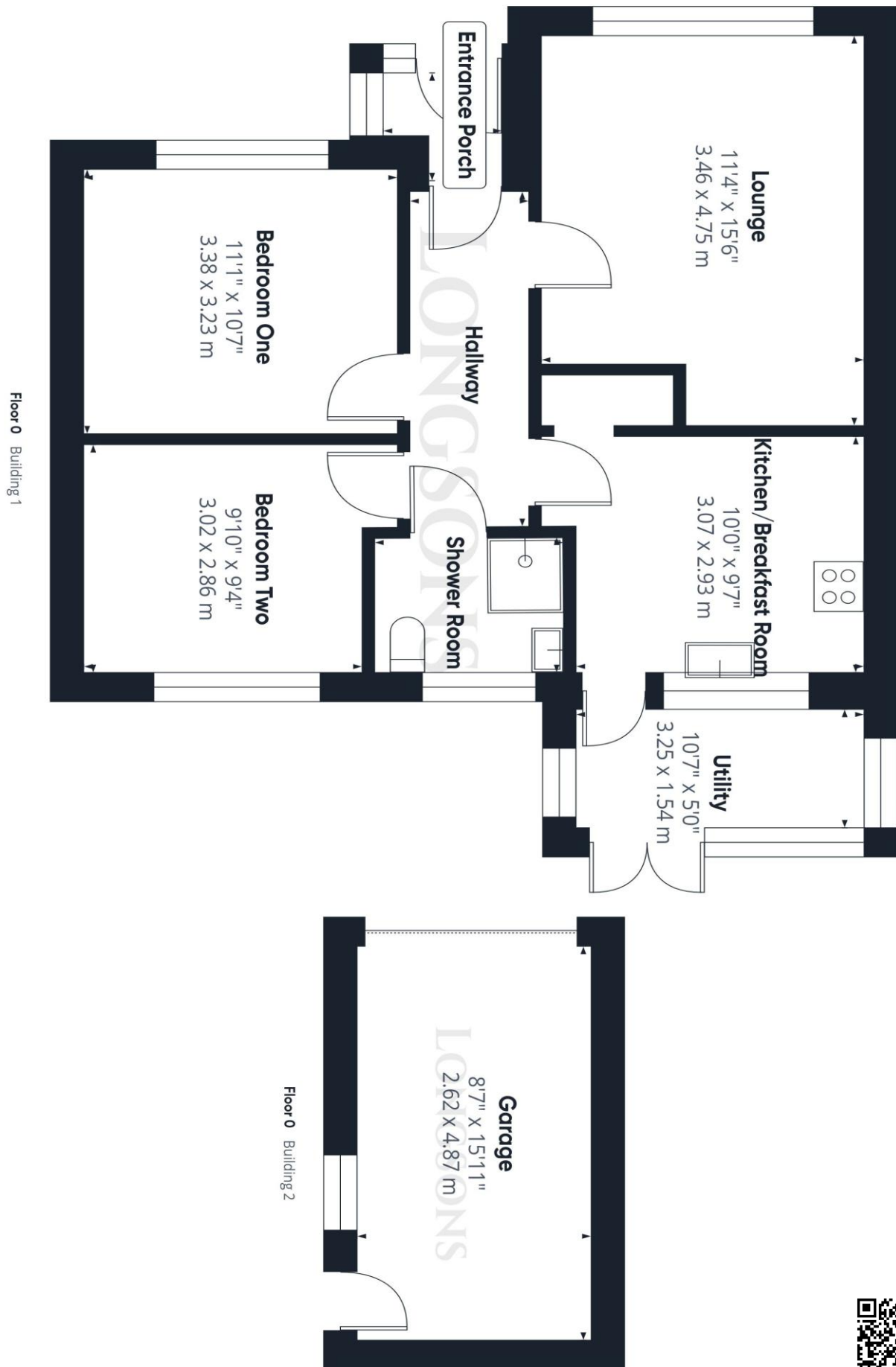




Wyndfields, Necton, Swaffham, PE37 8HD

Detached two bedroom bungalow situated in the popular well serviced village of Necton. The property has been completely refurbished and offers newly fitted kitchen and shower room, conservatory, garage, parking, gardens, gas central heating and UPVC double glazing.

Offers Over £270,000 Freehold





Rear Garden

Area laid to lawn, raised beds, shrubs and plants to bed and borders, path leading to seating area, green house, wooden shed, gated access to front. wooden fence to perimeter,

Garage

15'11" (4.85m) x 8'7" (2.62m)

Up and over door to front, UPVC double glazed window to side, door leading to rear garden.

Agent's Note

EPC rating C69 (Full copy available on request)

Council tax band B (Own enquiries should be made via Breckland District Council)

Some images have been enhanced by the use of AI photo staging and are for representative purposes only. This property is currently unfurnished.

Please note we have not tested any apparatus, fixtures, fittings, or services. Interested parties must undertake their own investigation into the working order of these items. All measurements are approximate and photographs provided for guidance only.

- Two Bedroom Detached Bungalow
- Sought After Village Location
- Conservatory
- Energy Efficiency Rating C69
- Garage, Parking and Gardens
- Gas Central Heating and UPVC Double Glazing

Situated in the popular well serviced village of Necton, Longsons are delighted to bring to the market this fully refurbished detached two bedroom bungalow. The property offers newly fitted kitchen and shower room, garage, parking, gardens, utility room, gas central heating and UPVC double glazing.

Briefly, the property offers entrance porch, hallway, lounge, kitchen, conservatory, two bedrooms, shower room, garage, parking, gardens, gas central heating UPVC double glazing.

NECTON

The popular Norfolk village of Necton is well serviced with amenities including shop, post office, doctors surgery, butchers, local pub, social club, excellent primary school and activity park for the children. The village is situated between Kings Lynn and Norwich, just a short drive away from the historic market town of Swaffham.

Entrance Porch

UPVC double glazed door to front, UPVC double glazed window to front and side, tiles to floor.

Entrance Hall

Wooden double glazed door to front, loft access, radiator.

Lounge

15'6" (4.72m) x 11'4" (3.45m)

UPVC double glazed window to front, radiator.

Kitchen/Breakfast Room

10'0" (3.05m) x 9'7" (2.92m)

Fitted kitchen units to walls and floor, work surface over, breakfast bar, composite sink unit with mixer tap and drainer, integrated electric oven, electric hob with extractor hood over, integrated dishwasher, space for tall fridge/freezer, tiled splashback, UPVC double glazed window to rear, radiator.

Utility

10'7" (3.23m) x 5'0" (1.52m)

Fitted kitchen units to floor with work surface over, space and plumbing for washing machine, wall mounted combi

gas boiler, tiles to floor, UPVC double glazed French doors leading to rear garden, UPVC double glazed windows to rear and side, radiator.

Bedroom One

11'1" (3.38m) x 10'7" (3.23m)

UPVC double glazed window to front, radiator.

Bedroom Two

9'10" (3m) x 9'4" (2.84m)

UPVC double glazed window to rear, radiator.

Shower Room

Shower cubicle, fully tiled walls, vertical towel radiator, extractor fan, hand wash basin fitted within fitted cabinet, concealed WC, obscure glass UPVC double glazed window to rear.

Outside Front

Driveway leading to garage, area laid to shingle and slate with shrubs to borders, path leading to front door, wall and wooden fence to borders, gated access to rear garden.

