



Guide Price
£300,000

Freehold

4x  1x  2x 

**Bramley Road,
Snodland, Kent, ME6**

OVER 60?

Secure this property
for up to **59% less!**

Wards
Helping you move forwards



Main features

- Stunning spacious family home in the heart of Snodland village
- Excellent travel links and great amenities on your doorstep
- Lovely open plan kitchen and dining area - perfect for entertaining
- Handy utility/cloakroom - ideal for family life
- Fantastic size garden to enjoy

Accommodation

GROUND FLOOR

Entrance Porch

Lounge: 13'8 x 11'5 (4.17m x 3.48m)

Dining Area: 11'5 x 11'5 (3.48m x 3.48m)

Kitchen : 9'6 x 7'0 (2.90m x 2.14m)

Utility/Cloakroom: 6'9 x 5'8 (2.06m x 1.73m)

FIRST FLOOR

Landing

Bedroom 1: 11'6 x 11'0 (3.51m x 3.36m)

Bedroom 2: 11'6 x 8'6 (3.51m x 2.59m)

Bathroom

SECOND FLOOR

Landing

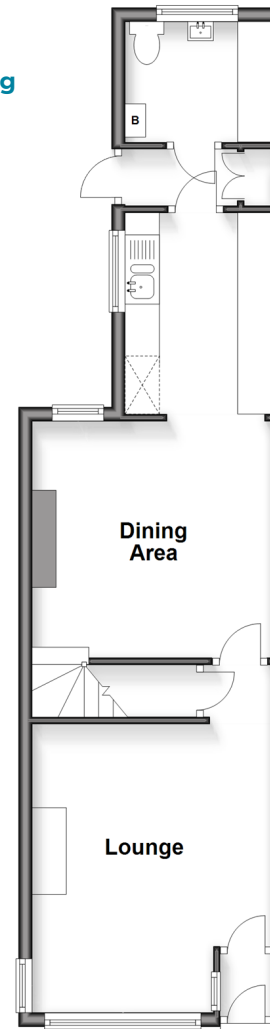
Bedroom 3: 10'8 x 8'6 (3.25m x 2.59m)

Bedroom 4: 10'3 x 9'8 (3.13m x 2.95m)

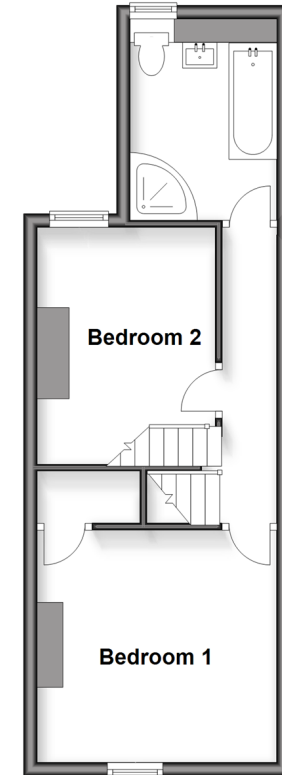
OUTSIDE

Front and Rear Gardens

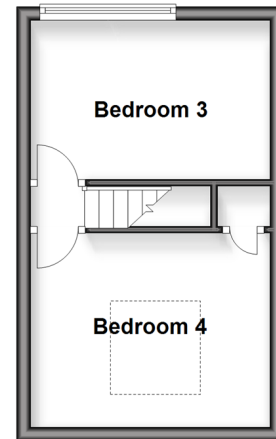
Ground Floor
Approx. 42.3 sq. metres (454.8 sq. feet)



First Floor
Approx. 33.5 sq. metres (360.5 sq. feet)



Second Floor
Approx. 20.9 sq. metres (224.9 sq. feet)



Call Snodland - 01634 245055 ■ wardsofKent.co.uk

- Legal advice should be taken to verify fixtures/fittings, planning, alterations and/or lease details
- Appliances & services are untested, dimensions are approximate and floor plans are not to scale
- Through a Homewise Home For Life Plan people aged 60+ can secure this property for up to 59% less, by purchasing a Lifetime Lease



13821670/20260307/CG/MM