



## Cotton Avenue, W3

£325,000

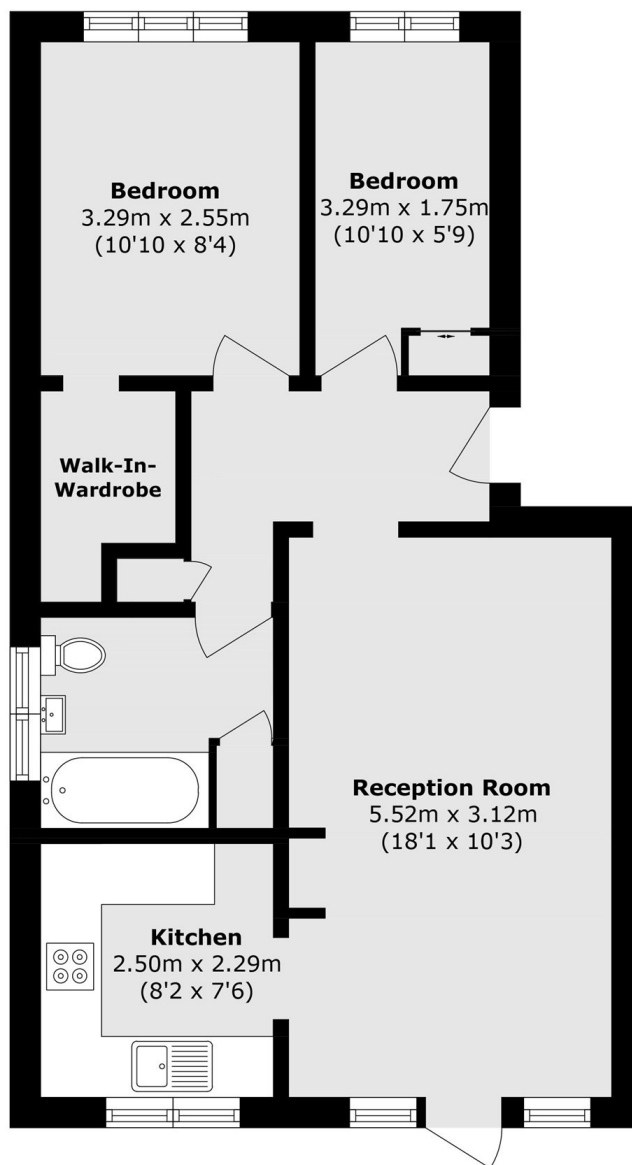
A well-maintained two-bedroom ground floor flat with shared garden access, allocated parking, and a share of freehold, the property would make an ideal first purchase or investment.

Just over half a mile from Acton Main Line station (Elizabeth line) and North Acton (Central line) tube station. Local shops are located 650m away.

### Features

- No onward chain
- Share of Freehold
- Two bedrooms
- Direct Garden Access
- Allocated Parking
- Recently renovated

Cotton Avenue,  
London, W3



Total area (approx.): 52.5 sq. m (565.1 sq. ft)