



move
Property Sales & Lettings

Russell Street, Cheltenham



Russell Street

Cheltenham

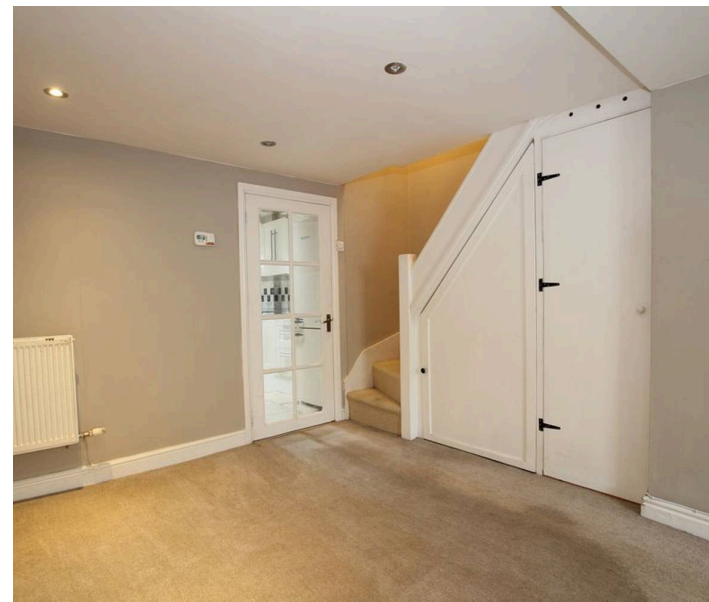
NO ONWARD CHAIN Well-presented two-bed terrace near Cheltenham centre with open-plan living, modern kitchen, low-maintenance garden, free parking. Ideal for first-time buyers or investors.

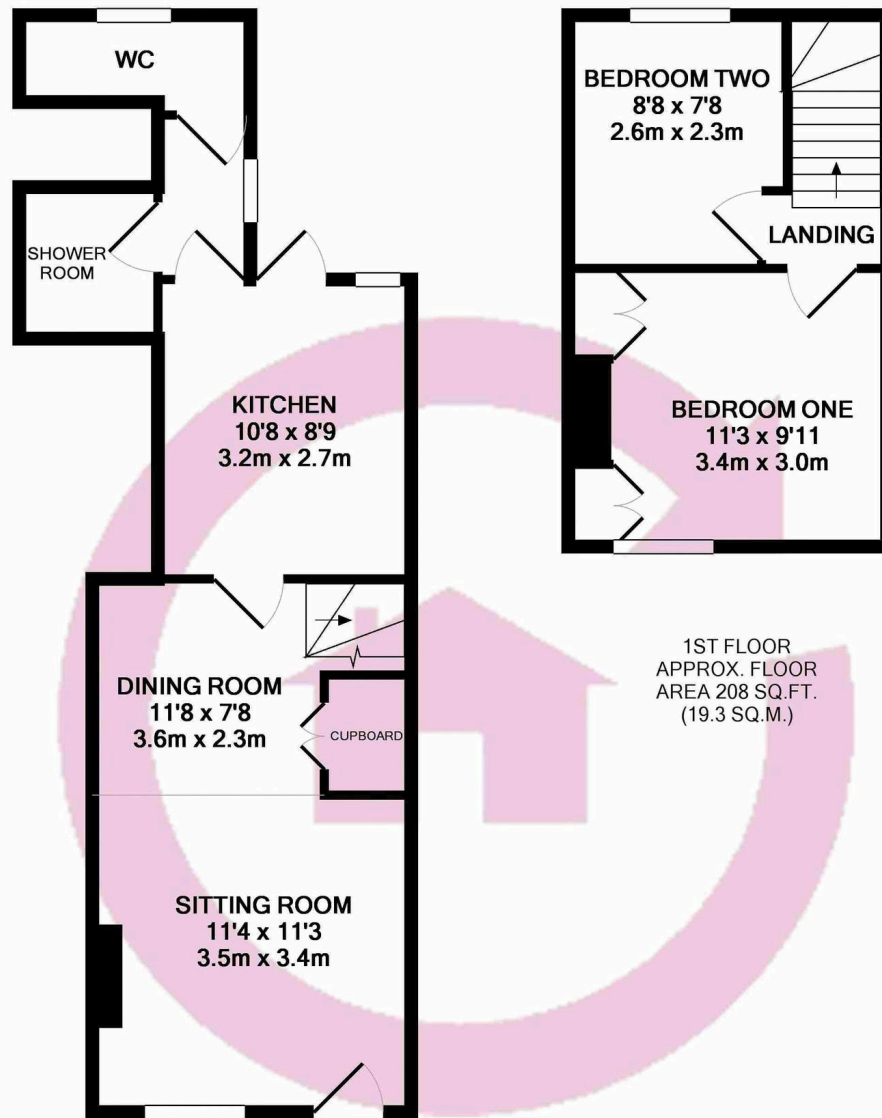
Council Tax band: TBD

EPC Energy Efficiency Rating: E

EPC Environmental Impact Rating: F

- Two Bedroom Terraced House
- NO ONWARD CHAIN
- Ideal For First Time Buyers
- Kitchen With White Goods Included
- Low Maintenance Garden
- Ground Floor Shower Room
- Local Amenities and Supermarket Nearby
- On Street Parking





1ST FLOOR
APPROX. FLOOR
AREA 208 SQ.FT.
(19.3 SQ.M.)

GROUND FLOOR
APPROX. FLOOR
AREA 378 SQ.FT.
(35.2 SQ.M.)

TOTAL APPROX. FLOOR AREA 586 SQ.FT. (54.5 SQ.M.)

Whilst every attempt has been made to ensure the accuracy of the floor plan contained here, measurements of doors, windows, rooms and any other items are approximate and no responsibility is taken for any error, omission, or mis-statement. This plan is for illustrative purposes only and should be used as such by any prospective purchaser. The services, systems and appliances shown have not been tested and no guarantee as to their operability or efficiency can be given





Move Estate Agents Cheltenham

1 The Clarence Clarence Parade, Cheltenham - GL50 3NY

01242 257333

cheltenham@move.uk.net

move.uk.net/

move
Property Sales & Lettings