



Bedford Road, SW4

£400,000

A well presented and stylish one bedroom period conversion, set across the first floor of an attractive semi detached house on Bedford Road in Clapham. The property features a unique horseshoe layout and a bright, private feel throughout. The light filled reception room offers space for living and dining, with a useful nook ideal for working from home. A separate shaker-style kitchen blends classic and modern design, while the rear facing bedroom benefits from fitted wardrobes and leafy views. A contemporary bathroom with a double-ended bath and rainfall shower completes the home, with the added option to apply for nearby allotments.

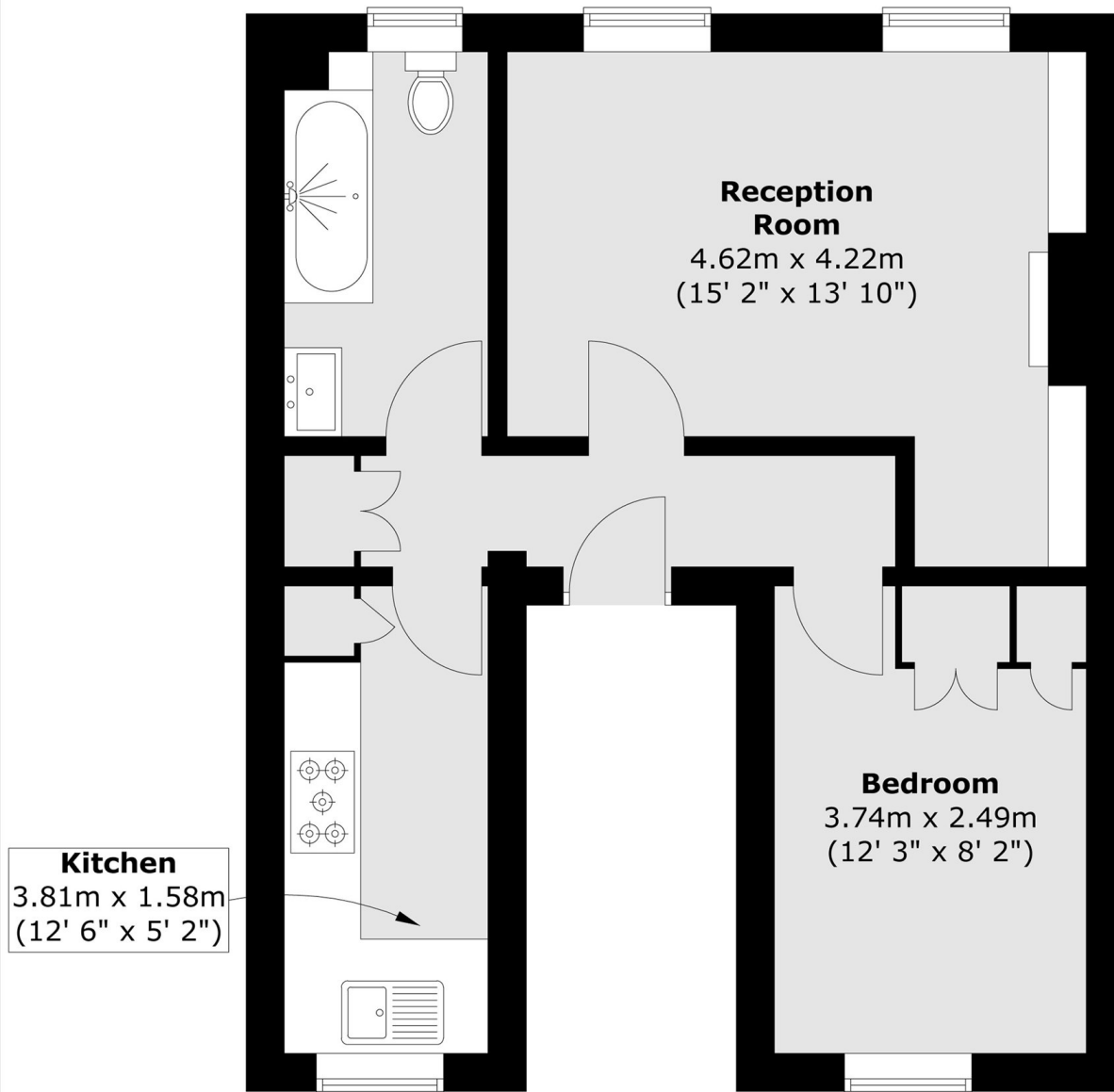
Ideally located moments from Clapham North Underground and Clapham High Street Overground, the property is close to the shops, cafés, and restaurants of Clapham High Street and Acre Lane, with excellent transport links including the Northern and Victoria lines and multiple bus routes into the City.

Features

- One Double Bedroom
- Share of freehold
- Superb Location

Bedford Road, London, SW4

First Floor



Total area (approx.) : 42.5 sq. m (457 sq. ft)