



Haverstock Hill, NW3

£800,000

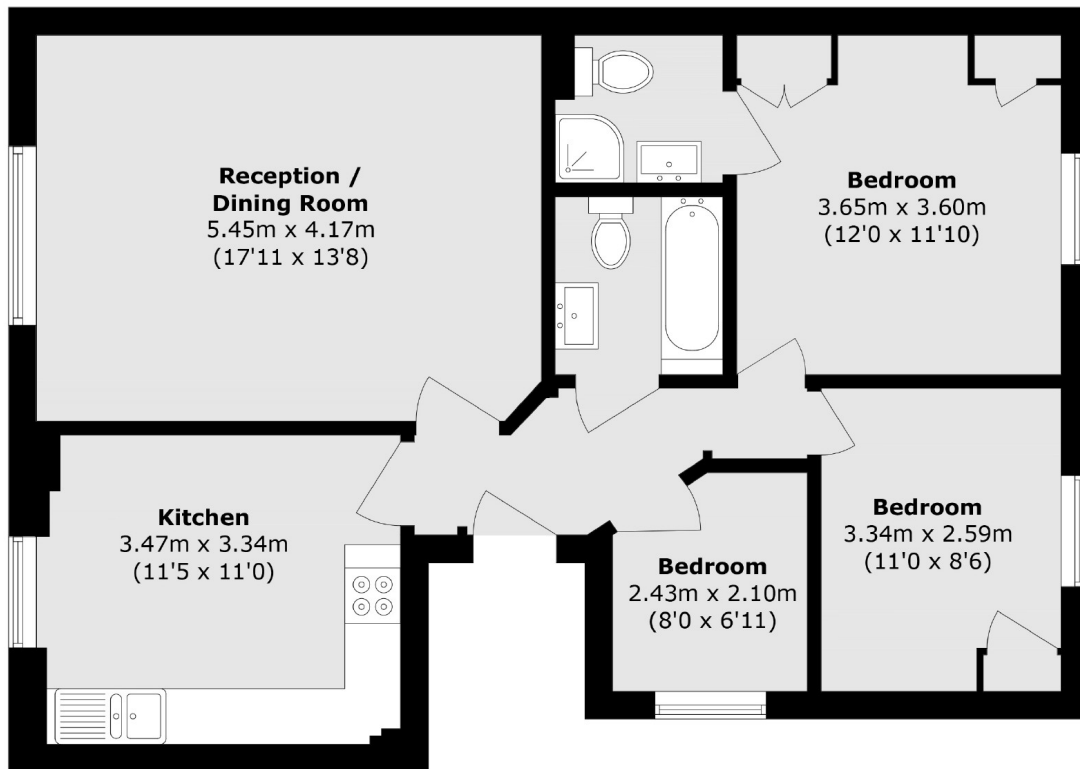
Spacious three bedroom flat with two bathrooms, one ensuite, on the first floor of a period conversion with a good size reception room with high ceilings and a large separate eat-in kitchen.

Conveniently situated close to Belsize Park Underground Station (Northern line) and the many popular shops, cafés and restaurants. The open spaces of Hampstead Heath are also with easy reach

Features

- Three Bedrooms
- Two Bathrooms
- First Floor Flat
- High Ceilings
- Eat-in Kitchen
- Chain Free

Haverstock Hill, London, NW3



Total area (approx.): 76.7 sq. m (825.5 sq. ft)