



**Price**

**£220,000**

**Leasehold**

1x  1x  1x 

**Willow House, Kensett  
Avenue, Southwater,  
Horsham, West Sussex,  
RH13**

**cubitt & west**  
Helping you move forwards



## Main features

- Beautifully presented ground floor apartment
- Located on the highly desired Berkeley development Broadacres
- Offered at 100% or 25% share
- French doors opening onto outside space
- Convenient allocated parking space
- Offered with no onward chain

## Accommodation

### GROUND FLOOR

Entrance Hall

Kitchen : 8'3 x 7'5 (2.52m x 2.26m)

Lounge : 17'7 x 10'8 (5.36m x 3.25m)

Bedroom 1: 13'3 x 11'4 (4.04m x 3.46m)

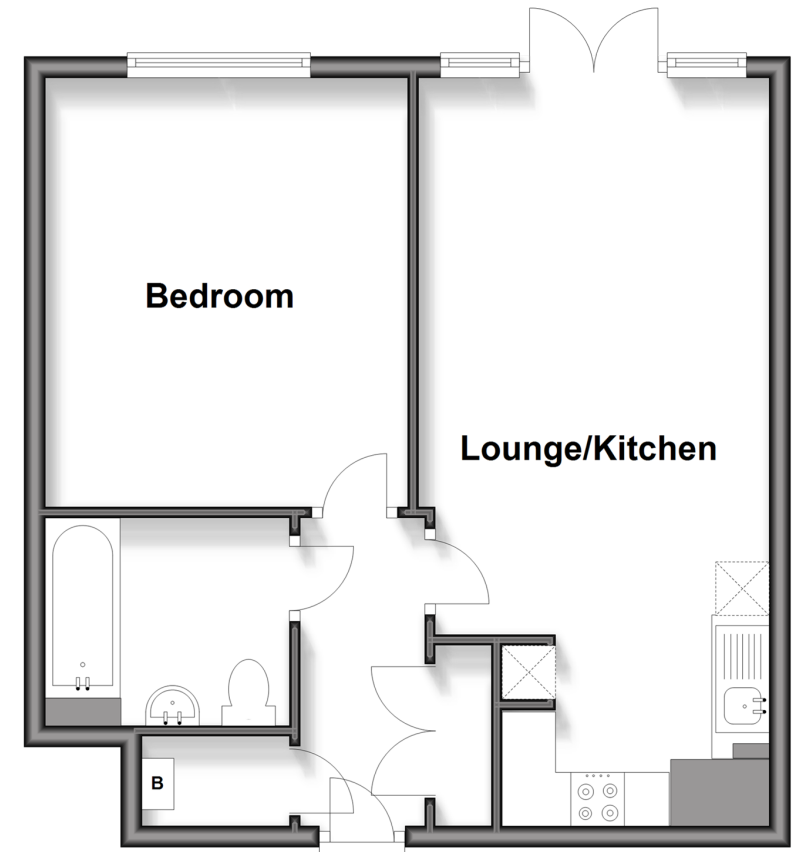
Bathroom : 7'5 x 6'3 (2.26m x 1.91m)

### OUTSIDE

Allocated Parking  
Garden

## Ground Floor

Approx. 46.8 sq. metres (503.4 sq. feet)



Call Southwater - 01403 731901 ■ [cubittandwest.co.uk](http://cubittandwest.co.uk)

- Legal advice should be taken to verify fixtures/fittings, planning, alterations and/or lease details
- Appliances & services are untested, dimensions are approximate and floor plans are not to scale



21909110/20250801/CR/DW