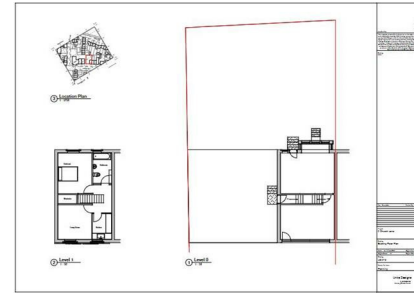
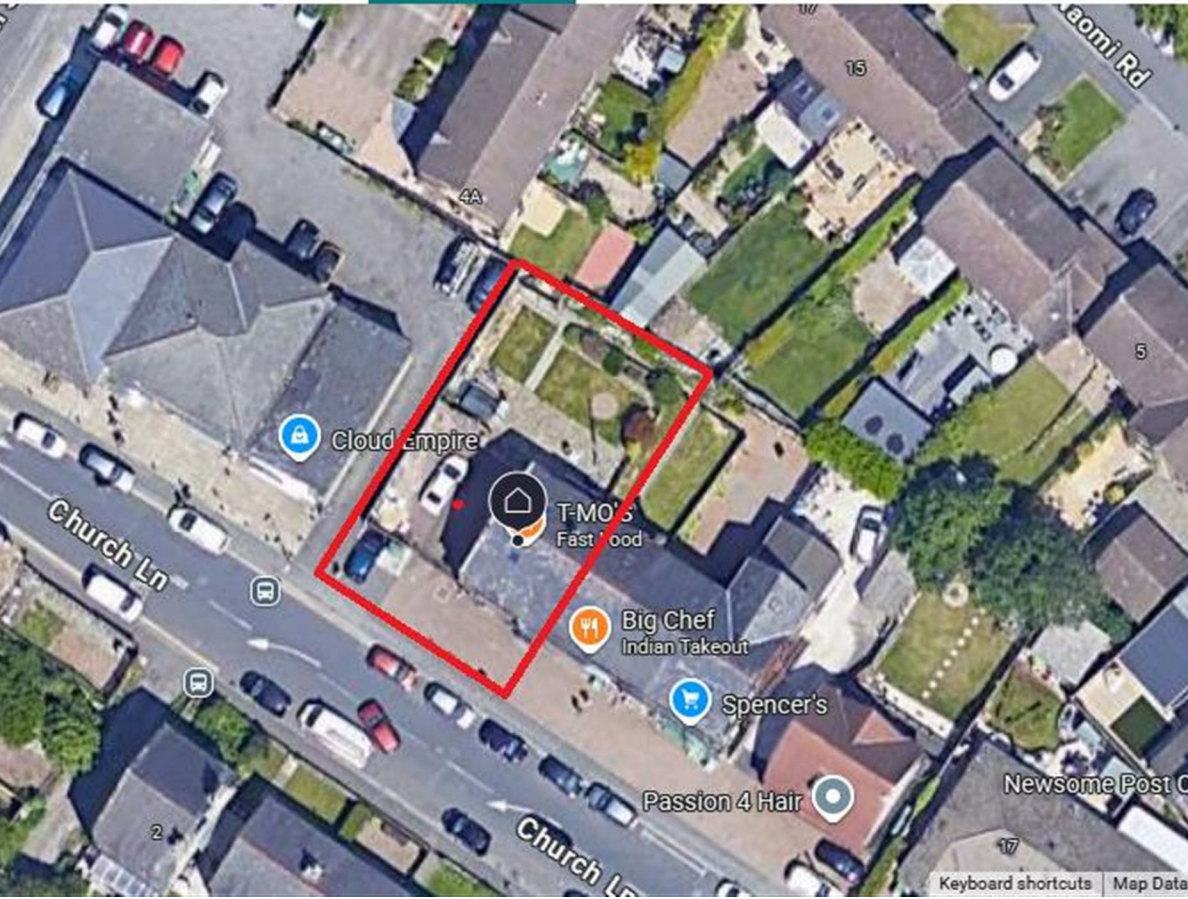


Church Lane, Newsome, HD4 6JE

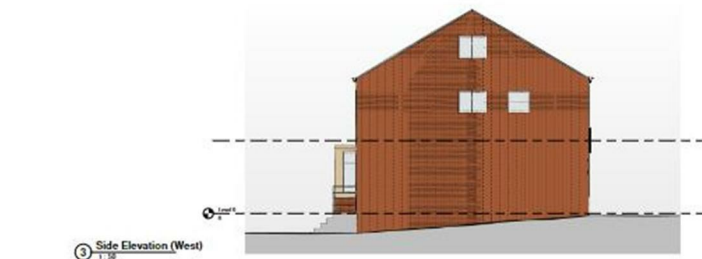
Auction Guide £235,000

Council Tax Band: A



1 Front Elevation (South)

2 Rear Elevation (North)



3 Side Elevation (West)

Units Design	
Unit No.	
Unit Name	
Unit Type	
Unit Size	
Unit Price	
Unit Status	
Unit Description	
Unit Location	
Unit Contact	
Unit Agent	
Unit Date	
Unit Version	
Unit Status	
Unit Description	
Unit Location	
Unit Contact	
Unit Agent	
Unit Date	
Unit Version	

Being sold via Secure Sale online bidding. Terms & Conditions apply. Starting Bid £220,000

Open House Estate Agents are proud to be selling this Commercial Property with living quarters on the First Floor and a thriving business on the Ground Floor with a long term tenant attached, in the popular thriving location of NEWSOME.

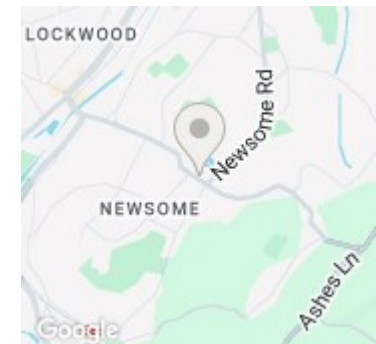
The Property occupies an end plot with a large plot of land which has PLANNING PERMISSION GRANTED for an additional building of the same dimensions, thus providing an excellent investment opportunity to create a further Commercial/Domestic property next door.

This is really one not to be missed as an Investor seeking a property with a Long Term Commercial Tenant in Situ providing regular income, as well as the permission to build a further investment building on the current plot.

Call us now to arrange your viewing - Our lines are Open 24 hours a day, 7 Days a week to take your call !!



Open House Huddersfield



Energy Efficiency Rating		
	Current	Potential
Very energy efficient - lower running costs		
(92 plus) A		
(81-91) B		
(69-80) C	79	
(55-68) D		
(39-54) E		
(21-38) F		
(1-20) G		
Not energy efficient - higher running costs		
England & Wales	EU Directive 2002/91/EC	