



St. Margarets Road, TW1

£1,595 Per calendar month

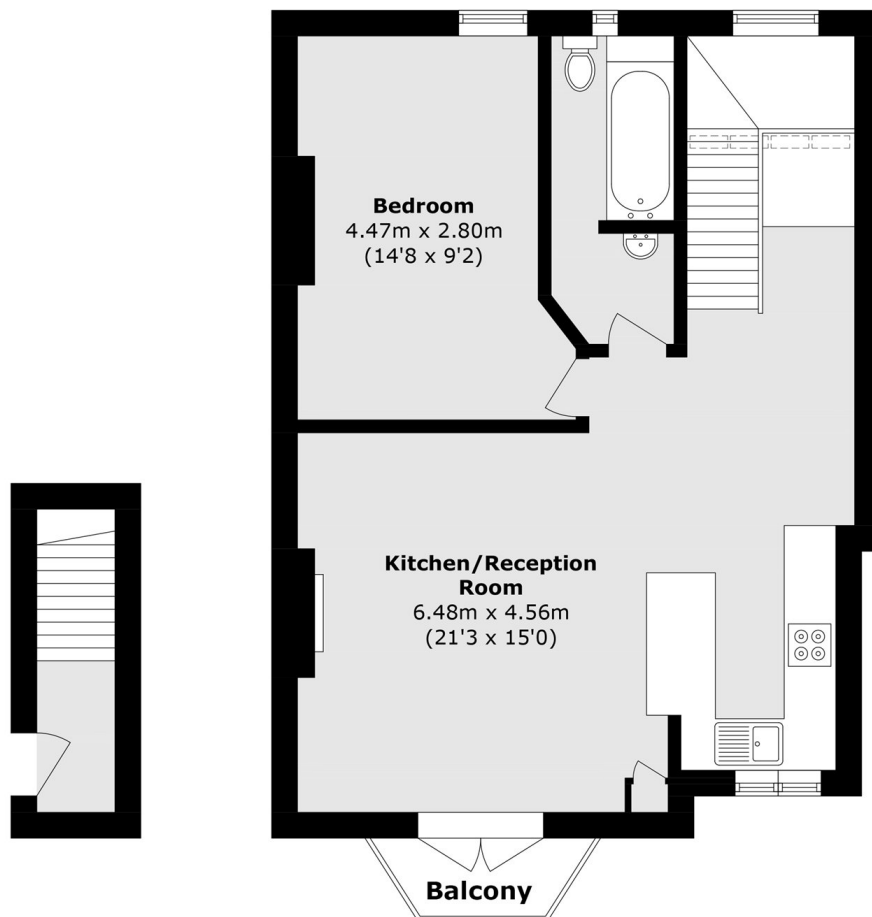
A well-presented top floor one bedroom apartment with a private balcony and off-street parking. The property offers bright accommodation throughout and is ideally suited to a professional individual or couple.

St Margarets road is a popular spot in St Margarets within 0.3 miles of the train station, cafés and boutiques shops of the village. The River Thames tow path stroll into Richmond is only 0.5 miles away.

Features

- One Bedroom
- Victorian Conversion
- Private Balcony
- Off-Street Parking
- Flexible Furnishings
- Modern Kitchen

St. Margarets Road, St Margarets, TW1



First Floor

Second Floor

Total area (approx.): 60.4 sq. m (650.1 sq. ft)
Balcony area (approx.): 1.8 sq. m (19.3 sq. ft)