



0203 870 00 00

hello@integra-estates.com

www.integra-estates.com



Knighton Park Road, Sydenham, SE26

PUTTING YOU FIRST

Key features

- Exceptional two bedroom house
- Parquet flooring
- High-end finish
- Boutique style bathroom
- Landscaped garden
- Feature fireplaces
- Fantastic location

Description

Integra-Estates is delighted to present this impeccably crafted two-bedroom mid-terraced home on Knighton Park Road, Sydenham. The moment you step inside, the striking herringbone parquet flooring sets a luxurious tone. It's an immediate attention grabbing welcome that greets you every time.

To the right, the living room is bathed in natural light from a bay window, exuding elegance with impressive modern shutters and a refined fireplace. It's perfect of cozy evenings in, entertaining or appreciating a good book with the abundance of natural light and calming feel.

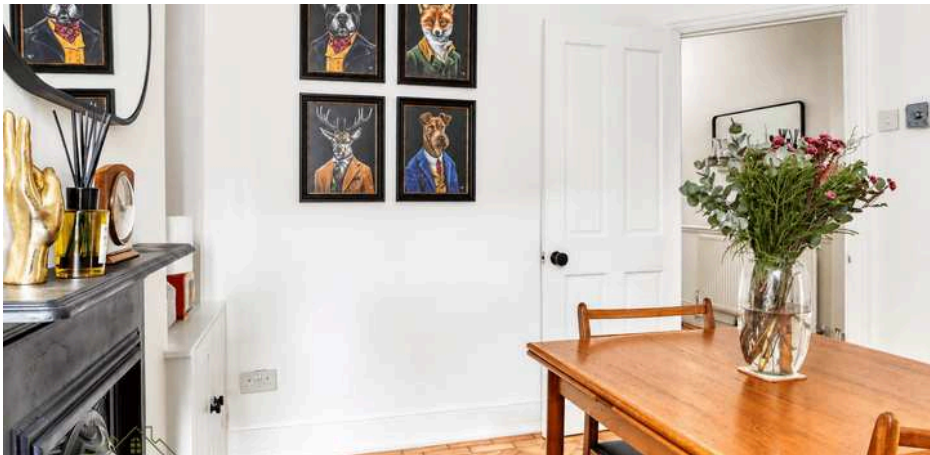
The dining room continues the theme, bespoke shelving and a beautifully positioned period fireplace create a sophisticated space for entertaining. The owners' attention to detail is evident in every corner. Again a room flooded in natural light, Just off the dining room is a generous extension where the Kitchen is located.

The kitchen is a chef's delight, with generous high and low-level storage, ample counter space so perfect for those wanting to entertain or on the go with views over a serene garden.



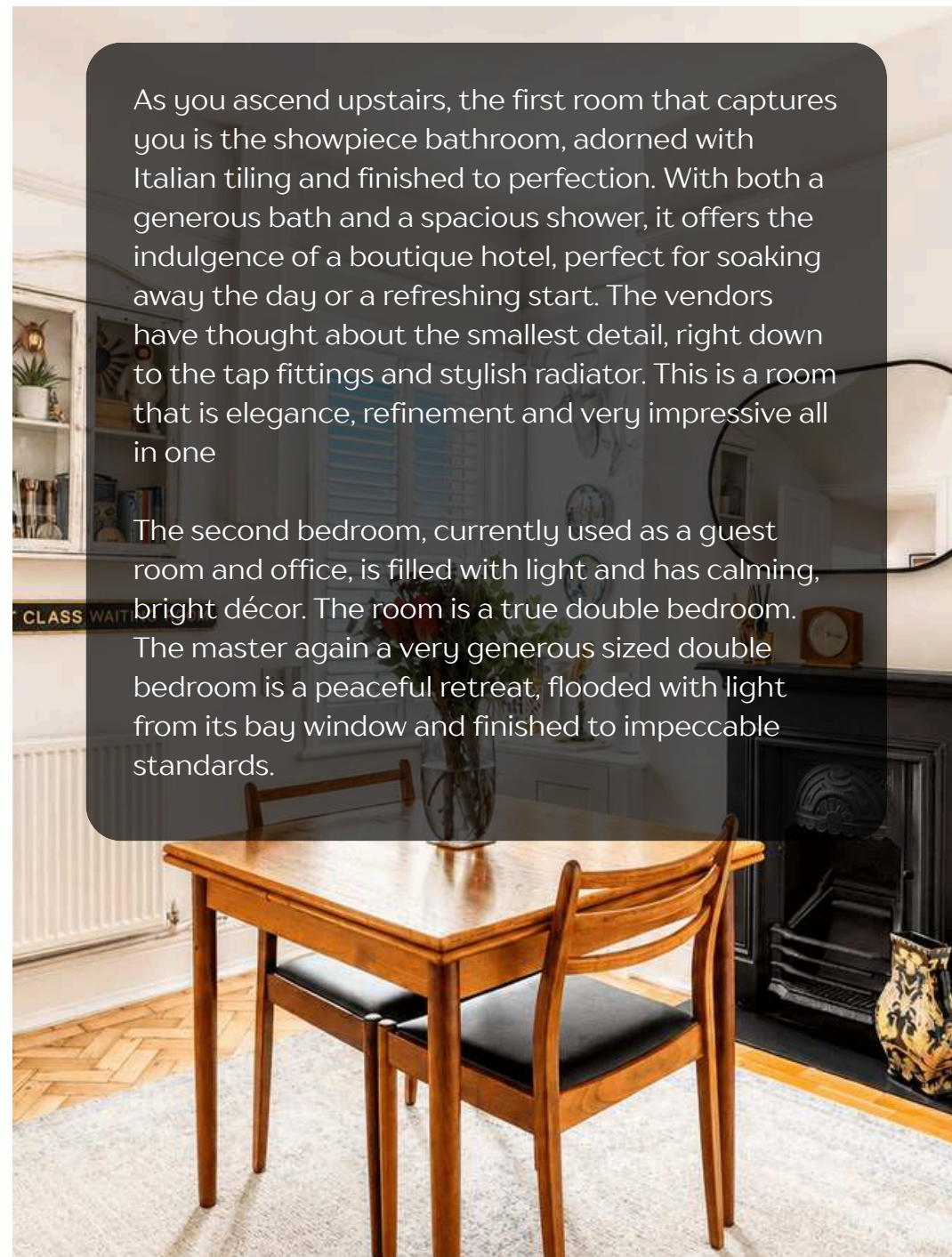






As you ascend upstairs, the first room that captures you is the showpiece bathroom, adorned with Italian tiling and finished to perfection. With both a generous bath and a spacious shower, it offers the indulgence of a boutique hotel, perfect for soaking away the day or a refreshing start. The vendors have thought about the smallest detail, right down to the tap fittings and stylish radiator. This is a room that is elegance, refinement and very impressive all in one

The second bedroom, currently used as a guest room and office, is filled with light and has calming, bright décor. The room is a true double bedroom. The master again a very generous sized double bedroom is a peaceful retreat, flooded with light from its bay window and finished to impeccable standards.









Location

This is a home that will more than likely be the envy of your friends, a sanctuary you can appreciate every day. It's not just a two bedroom mid-terrace home, its ha home where the vendors have poured many years of love, care and attention to create a stunning property that is enjoyable from every room.

Sydenham High Street is moments away, with boutique shops and dining, as well as traditional high street names and chains. Sydenham and Penge East stations provide fast London links and the award-winning Mayow Park is nearby offering an abundance of outdoor space and woodland.

Homes of this exceptionally high standard in a lovely location do not stay on the market for long. Please contact Integra-Estates to arrange your viewing soon rather than later to arrange your viewing. 0203 870 00 00





Description

- Exceptional two-bedroom house
- Parquet flooring
- High-end finish
- Boutique-style bathroom
- Landscaped garden
- Feature fireplaces
- Fantastic location

Disclaimer

Please be advised some of these images might have been digitally edited with furniture. This is for illustration purposes only. The furniture in these images are not to scale. The Floor plan in its entirety is for illustration purposes only, it is not to scale! it is the buyer's responsibility to obtain an accurate floor plan and not to rely upon the measurement listed. Integra-estates accepts no responsibility for misprints or any errors or inaccuracies in the floor plan and advertisement of this property listing. Reference to appliances and/or services does not imply that they are necessarily in working order or fit for the purpose and have not been tested.

Buyers are advised to obtain verification from their solicitors as to the Freehold/Leasehold status of the property, This includes but is not limited to lease length, service charge, or ground rent charges. The position regarding any fixtures & fittings and where the building has been extended/converted, as to Planning Approval and Buildings Regulations compliance Every care is taken in giving particulars but should any error inadvertently occur, Integra-Estates do not hold themselves responsible and accept no responsibility for any expenses, loss, or time incurred. Neither the vendor, the owners, or any employee of Integra-estates make or give any representation or Warranty in relation to the property.

These particulars do not constitute or form part of an offer or contract nor may they be regarded as representations. All interested parties must themselves verify their accuracy. Please be mindful Under the UK Money Laundering, Terrorist Financing and Transfer of Funds (Information on the Payer) Regulations 2017, Integra-Estates are legally obliged to carry out anti money laundering checks on all parties involved in a property transaction. This includes (but not limited to) verifying identity and obtaining full evidence of funds and source of those funds before a sale can progress. These rules are enforced by HM Revenue and Customs (HMRC) as the supervisory authority and form part of the duties estate agents must fulfil to prevent financial crime.

Official government guidance states that customer due diligence must be carried out so that estate agents can confirm a buyer's identity and make sure that the money being used to purchase a property is from a legitimate source. Without satisfactory proof of funds and verification of the source of those funds, Integra-Estates cannot legally proceed with a transaction. To ensure we are compliant with this law, Integra-Estates uses an external AML compliance company. As a business we charge £35 Plus VAT per person for our AML checking process. for example if one person is buying a property via Integra-Estates on their own, we charge £35 Plus VAT £7.00 Total Payable £42.00 If two people are purchasing the property it will be a total payment inclusive of VAT of £84.00.