



Stoke Newington Church Street, £700,000

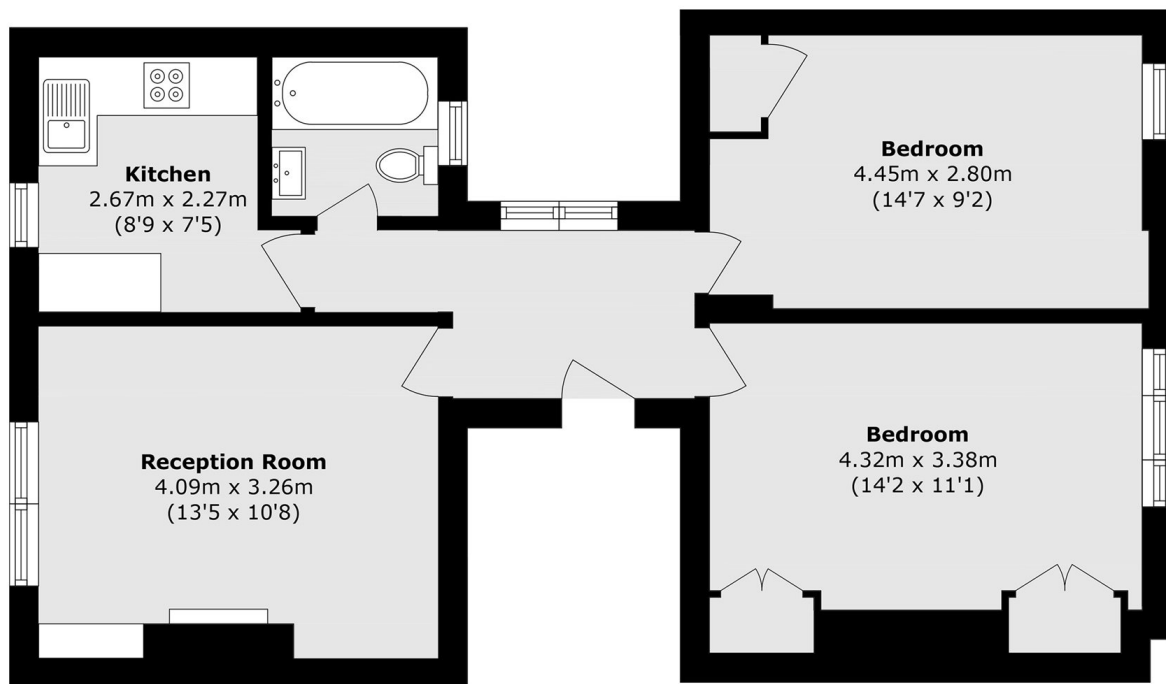
A charming two double bedroom second-floor converted flat set within a bay-fronted period property, ideally located opposite Clissold Park. The property benefits from excellent local amenities, including independent shops, cafés, restaurants, and leisure facilities.

The property is ideally positioned opposite Clissold Park and within easy reach of a wide range of local amenities. Excellent transport links are available nearby, including Stoke Newington and Rectory Road Overground stations, as well as Manor House underground station (Piccadilly Line), providing convenient access into The City and West End.

Features

- Two Bedrooms
- Second Floor
- Separate Kitchen
- Period
- Share of Freehold
- Chain Free

Stoke Newington Church Street, London, N16



Second Floor

Total area (approx.): 57.9 sq. m (623.2 sq. ft)