

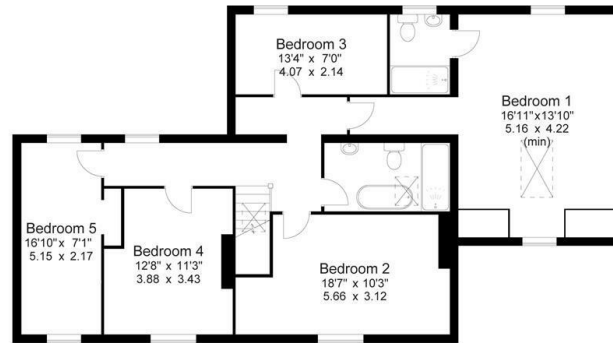


Old Pottery Farm, 19 Pepper Hill, Shelf, Halifax, HX3 7TH

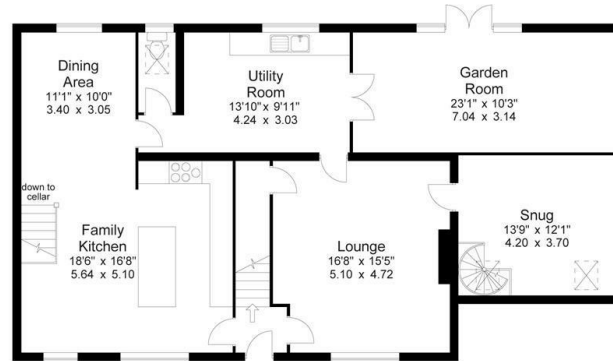
Offers In The Region Of £875,000

- : Superb Character Property
- : Open Plan Kitchen Family Room & Dining Room
- : 1/2 Acre Field and Gardens
- : Viewing Essential
- : Delightful Rural Setting
- : 2 Reception Rooms & Office
- : Superb Panoramic Views
- : 5 Bedrooms & 2 Bathroom
- : Large Utility Room & A Downstairs Cloakroom
- : Barn with Planning Permission

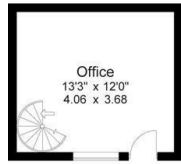
Approx Gross Floor Area = 2604 Sq. Feet
 = 241.9 Sq. Metres



First Floor

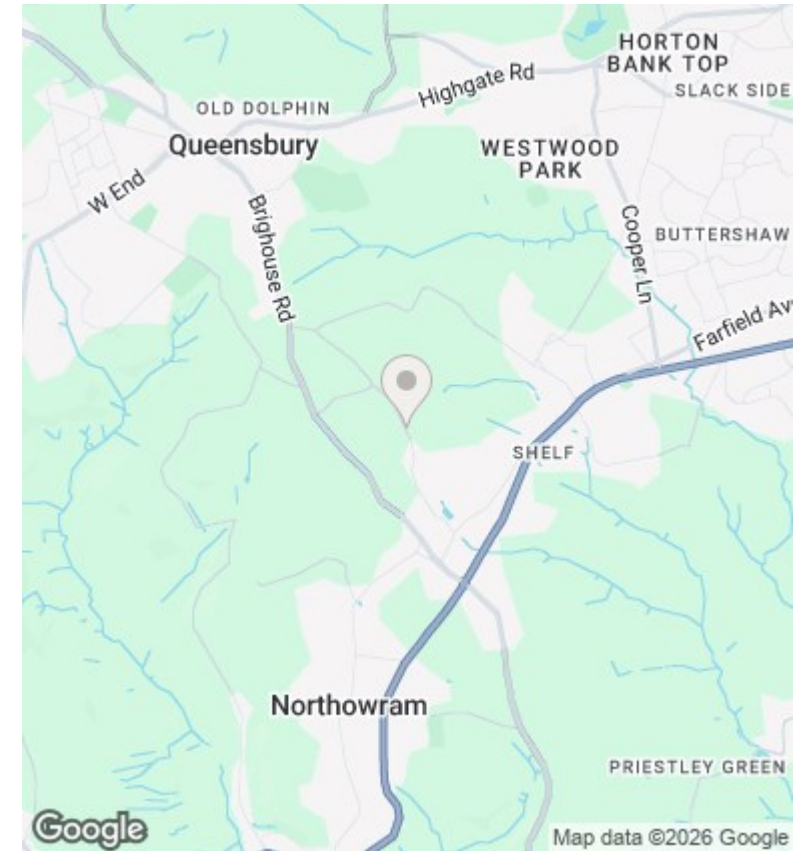


Ground Floor



Lower Ground Floor

For illustrative purposes only. Not to scale.



Directions

SAT NAV HX3 7TH

Viewings

Viewings by arrangement only. Call 01422 349222 to make an appointment.

Council Tax Band

C

EPC Rating:

E

