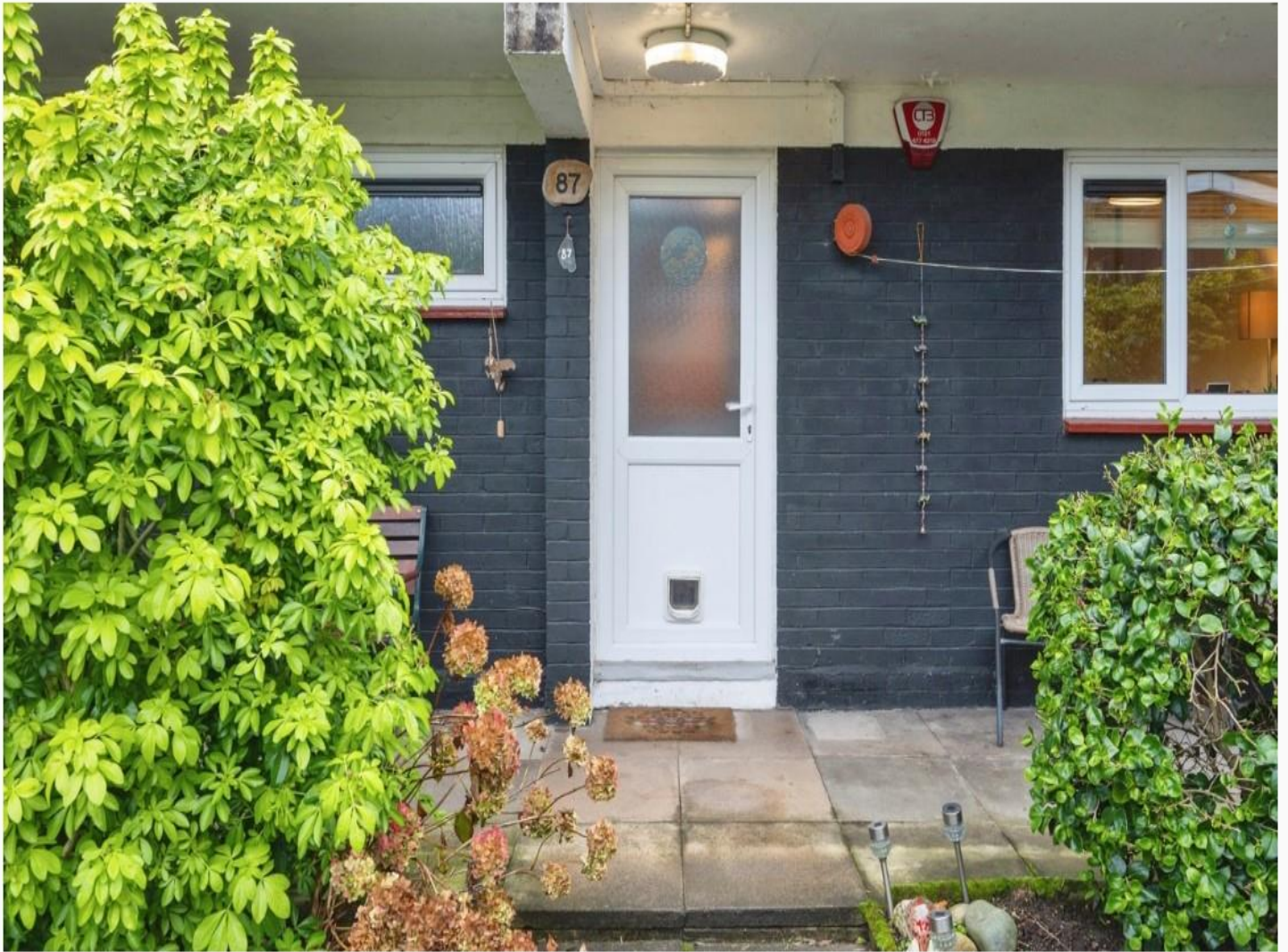


for sale

offers in excess of **£130,000** Leasehold



Thirlmere Drive Birmingham B13 9QL

Located in Moseley with direct links to local amenities and the City Centre. Maisonette with two bedrooms, one bathroom, kitchen, and lounge. Ideal for first time buyers.

- Energy Rating: C
- Double Glazing
- Gas Central Heating
- On Street Parking
- Allocated Terrace

Property Details

Entrance Porch

Via Double Glazed Door with a storage cupboard

Entrance Hall

Radiator

Lounge 13' 9" x 11' 3" (4.19m x 3.43m)

Double Glazed Window

Radiator

Kitchen 11' 1" x 9' 10" (3.38m x 3.00m)

Double Glazed Window

Gas Hob/Hood

Separate Integrated Oven

Boiler

Bedroom 1 14' 9" x 9' 3" (4.50m x 2.82m)

Double Glazed Window

Storage Cupboard

Radiator

Bedroom 2 13' 2" x 8' 4" (4.01m x 2.54m)

Double Glazed Window

Radiator

Bathroom

Double Glazed Window

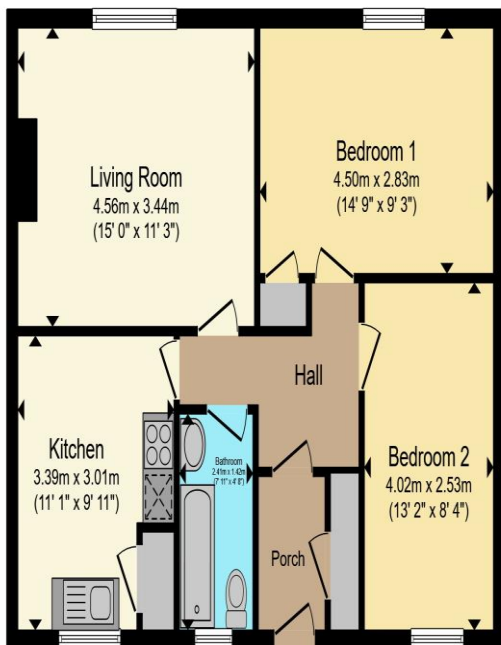
Towel Rail

Shower over bath

Basin Vanity

Toilet





Total floor area 63.5 m² (683 sq.ft.) approx

This floor plan is for illustrative purposes only. It is not drawn to scale. Any measurements, floor areas (including any total floor area), openings and orientation are approximate. No details are guaranteed, they cannot be relied upon for any purpose and they do not form part of any agreement. No liability is taken for any error, omission or misstatement. A party must rely upon its own inspection(s). Powered by www.propertybox.io



To view this property please contact Connells on

T 0121 443 3357
E kingsheath@connells.co.uk

93 High Street Kings Heath
BIRMINGHAM B14 7BW

Property Ref: KTH310829 - 0010

Tenure:Leasehold EPC Rating: C

Council Tax Band: A Service Charge: £1230.00

Ground Rent: £10.00

This is a Leasehold property with details as follows; Term of Lease 125 years from 21 Feb 1983. Should you require further information please contact the branch. Please Note additional fees could be incurred for items such as Leasehold packs.

1. MONEY LAUNDERING REGULATIONS Intending purchasers will be asked to produce identification documentation at a later stage and we would ask for your co-operation in order that there will be no delay in agreeing the sale. 2. These particulars do not constitute part or all of an offer or contract. 3. The measurements indicated are supplied for guidance only and as such must be considered incorrect. Potential buyers are advised to recheck measurements before committing to any expense. 4. We have not tested any apparatus, equipment, fixtures, fittings or services and it is in the buyers interest to check the working condition of any appliances.

Connells Residential is registered in England and Wales under company number 1489613, Registered Office is Cumbria House, 16-20 Hockliffe Street, Leighton Buzzard, Bedfordshire, LU7 1GN. VAT Registration Number is 500 2481 05.

see all our properties at www.connells.co.uk | www.rightmove.co.uk | www.zoopla.co.uk