

MALTHOUSE ROAD, SW11

£3,900 pcm

Check out this 2-bedroom apartment located within the Lexington Gardens development, complete with open-plan kitchen, large bedrooms, floor to ceiling windows and private balcony, perfect for enjoying a morning coffee or a breath of fresh air.

- Two Bedroom
- Two Bathroom
- Furnished
- 24 Hour Concierge
- Residents Gym
- Rooftop Terrace

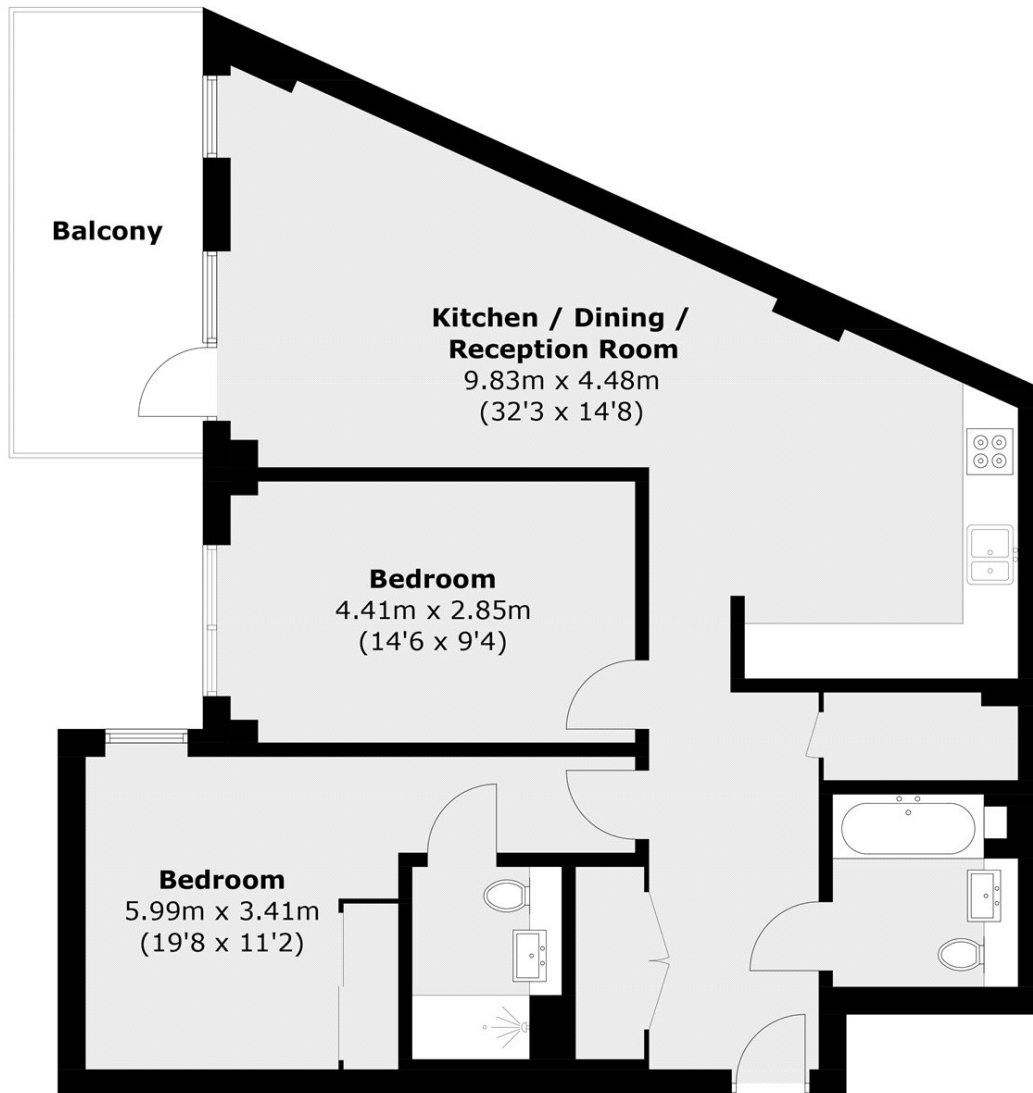


ABOUT THE HOME

Located within the sought-after Lexington Gardens development, this stylish two-bedroom apartment offers bright and modern open-plan living. The property features two spacious bedrooms, two contemporary bathrooms, and a private balcony perfect for enjoying some fresh air. Residents also benefit from excellent amenities including a 24-hour concierge, fully equipped gym, and rooftop terrace.







Total area (approx.): 82.9 sq. m (892.3 sq. ft)
Balcony: 9.9 sq. m (106.6 sq. ft)

LiFE RESIDENTIAL

11 Flagstaff House, London,
SW8 2LZ
Sales: 020 7476 1408
Lettings: 020 7582 7989

Energy Rating: B. We aim to make our particulars both accurate and reliable. However they are not guaranteed; nor do they form part of an offer or contract. If you require clarification on any points then please contact us, especially if you're traveling some distance to view. Please note that appliances and heating systems have not been tested and therefore no warranties can be given as to their good working order.