



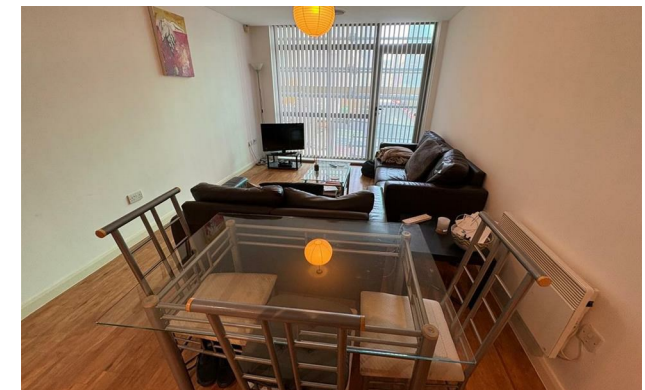
jordan fishwick

Apt 7 Red Building 6 Ludgate Hill, M4 4BW
£1,100 Per Calendar Month



6 Ludgate Hill Manchester M4 4BW

£1,100 Per Calendar Month



The Property


PLEASE NOTE - THERE IS BUILDING MAINTENANCE OCCURING ON THE BUILDING. DISRUPTIONS WILL OCCUR DURING YOUR TENANCY. UPDATES TO FOLLOW

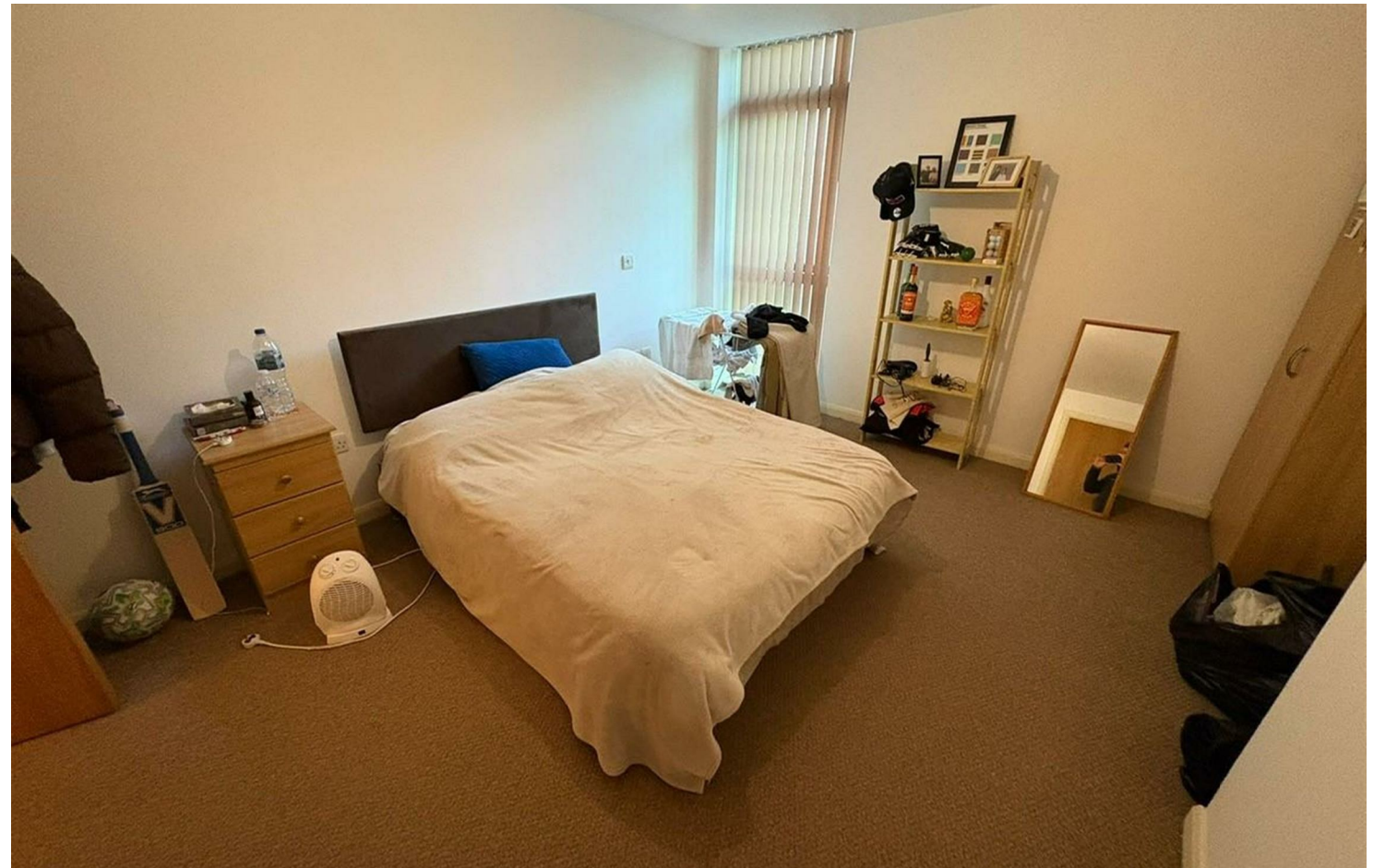
Available Early June. This two bedroom raised ground floor apartment has excellent space and both bedrooms are good size doubles. Located just off Rochdale Rd and a short walk to The Printworks. There is the benefit of Surround Sound throughout the apartment which comprises: entrance hall with storage cupboard, living/kitchen with appliances and master bedroom with en-suite shower room and further bathroom with three piece suite. Furnished. No Parking. Tax Band D. EPC Rating C. REPOSIT (Nil Deposit Option) Available for this property.

VIDEO/ PHOTO OFFERS NOT ACCEPTED - PLEASE CALL TO BOOK A VIEWING

- Available Early June
- Ground Floor Apartment
- Close to City Centre
- Tax Band D
- EPC Rating C
- Furnished
- No Parking
- Building Maintenance occurring now



Energy Efficiency Rating		
	Current	Potential
Very energy efficient - lower running costs		
(92 plus) A		
(81-91) B		
(69-80) C		
(55-68) D		
(39-54) E		
(21-38) F		
(1-20) G		
Not energy efficient - higher running costs		
England & Wales	EU Directive 2002/91/EC 	





These particulars are believed to be accurate but they are not guaranteed and do not form a contract. Neither Jordan Fishwick nor the vendor or lessor accept any responsibility in respect of these particulars, which are not intended to be statements or representations of fact and any intending purchaser or lessee must satisfy himself by inspection or otherwise as to the correctness of each of the statements contained in these particulars. Any floorplans on this brochure are for illustrative purposes only and are not necessarily to scale.

Offices at: Offices at Chorlton, Didsbury, Disley, Hale, Glossop, Macclesfield, Manchester Deansgate, Manchester Whitworth Street, New Mills, Sale, Wilmslow and Withington