



7 Elswick Close, Nottingham - NG5 5PR

Guide Price **£190,000**





7 Elswick Close

Nottingham, Nottingham

Semi-detached home in a cul-de-sac available with no chain! Ideal for first-time buyers, growing families or investors and boasting a lounge/diner, kitchen, 3 beds and a southerly-facing garden!

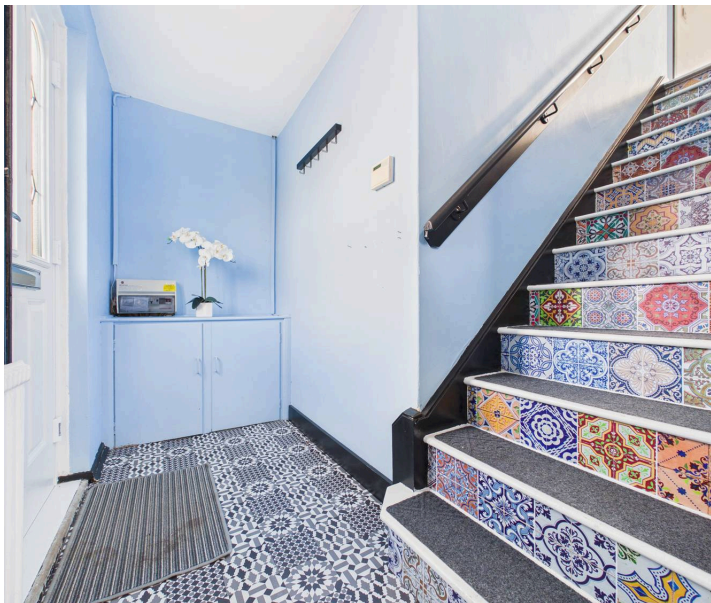
Council Tax band: A

Tenure: Freehold

EPC Energy Efficiency Rating: C

EPC Environmental Impact Rating:

- Semi-detached home in a cul-de-sac and fitted with PV SOLAR panels
- Offered to the market with no upward chain
- Conveniently positioned for access to local amenities, popular schools and frequent bus services to the surrounding areas and City
- Ideal for growing families, first-time buyers and investors alike
- Bright and spacious dual-aspect lounge/dining room
- Fitted kitchen with a range of units and space for a variety of freestanding appliances
- Three first floor bedrooms (including two double bedrooms)
- Bathroom with a two-piece white suite, over-bath shower and a separate neighbouring WC
- Southerly-facing lawned rear garden with a useful garage/store
- Drive provides ample off-street parking







Entrance Hall
2.65 x 1.13 m
8'8" x 3'8"



Kitchen
2.31 x 5.52 m
7'7" x 18'1"

Lounge/Dining Room
3.42 x 6.86 m
11'2" x 22'6"

Approximate total area⁽¹⁾
38.8 m²
418 ft²

(1) Excluding balconies and terraces

Calculations reference the RICS IPMS 3C standard. Measurements are approximate and not to scale. This floor plan is intended for illustration only.

GIRAFFE360





David James Estate Agents

98-100 Front Street, Arnold - NG5 7EJ

0115 955 5550 • arnold@david-james.com • www.david-james.com

These particulars are produced in good faith and are set out as a general guide only. Measurements are approximate and floor plans are for illustrative purposes only. Services have not been tested. We have established professional relationships with third-party suppliers for the provision of services to Clients, details of which can be found on the property listing page on our website.