

Cromwells



Amesbury Close, Worcester Park, KT4 8PW
Guide Price £550,000

Offered with No Onward Chain is this delightful 3-bedroom family home. Coming to the market for the first time in over 50 years. This property offers 2 separate reception rooms, modern kitchen, 3 bedrooms, bathroom, pretty garden to front and back, garage and off-street parking along with potential to extend subject to planning permission. With close proximity to Worcester Park high street, parklands at 'The Hamptons', bus routes, Worcester Park mainline station and a selection of schools and nurseries.

No Chain · Private Rear Garden ·
Off Street Park and Garage · Potential to Modernise and Extend
Subject to Planning Permission

Front -

Established garden with mature trees and shrubs, driveway to garage.

Front Door

Hallway -

Carpeted, radiator in decorative cover, stairs to 1st floor landing, cupboard housing understairs storage and meters, door to

Lounge - 13' 8" x 11' 0" (4.16m x 3.35m)

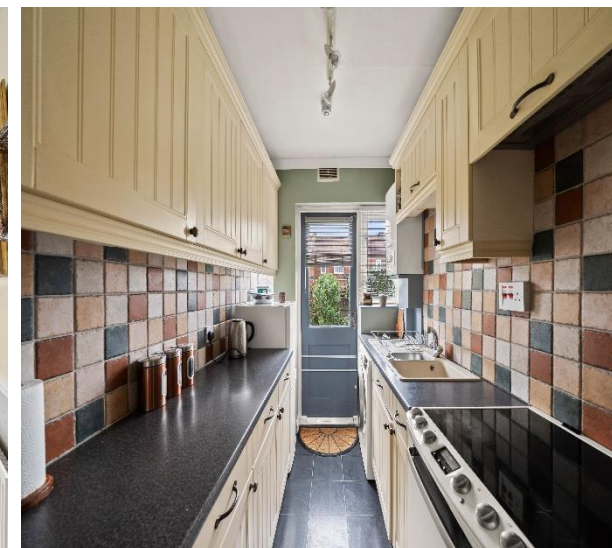
Double glazed bay window to front aspect, double panelled radiator, carpeted, feature fireplace with tile inserts and gas fire.

Dining Room - 11' 8" x 10' 2" (3.55m x 3.10m)

Glazed windows and doors to garden, carpeted, radiator.

Kitchen - 8' 6" x 6' 3" (2.59m x 1.90m)

Range of wall mounted units with matching cupboards and drawers below, work surface, inset 1.5 bowl sink and drainer, space for fridge/freezer, space and plumbing for washing machine, space for oven and extractor above, wall mounted new 'Vaillant' boiler, tiled floor, double glazed door and window to garden.



Stairs to 1st Floor -

Carpeted, double glazed window side aspect, loft access.

Bedroom 1 - 13' 8" x 9' 4" (4.16m x 2.84m)

Double glazed bay window to front aspect, radiator, carpeted.

Bedroom 2 - 11' 8" x 9' 4" (3.55m x 2.84m)

Double glazed window to rear aspect, radiator, carpeted.

Bedroom 3 - 6' 11" x 7' 1" (2.11m x 2.16m)

Double glazed oriel bay window to front aspect, radiator, carpeted.

Bathroom -

3-piece suite comprising panel enclosed bath with shower overhead, pedestal wash hand basin, airing cupboard, double glazed window to rear aspect, radiator.

W/C -

W/C, double glazed window to side aspect, wood effect flooring.

Garden -

Fence enclosed rear garden, lawn area, mature shrub and plant borders, paved patio, access to garage.

Garage -

Up and over door, power and lighting.



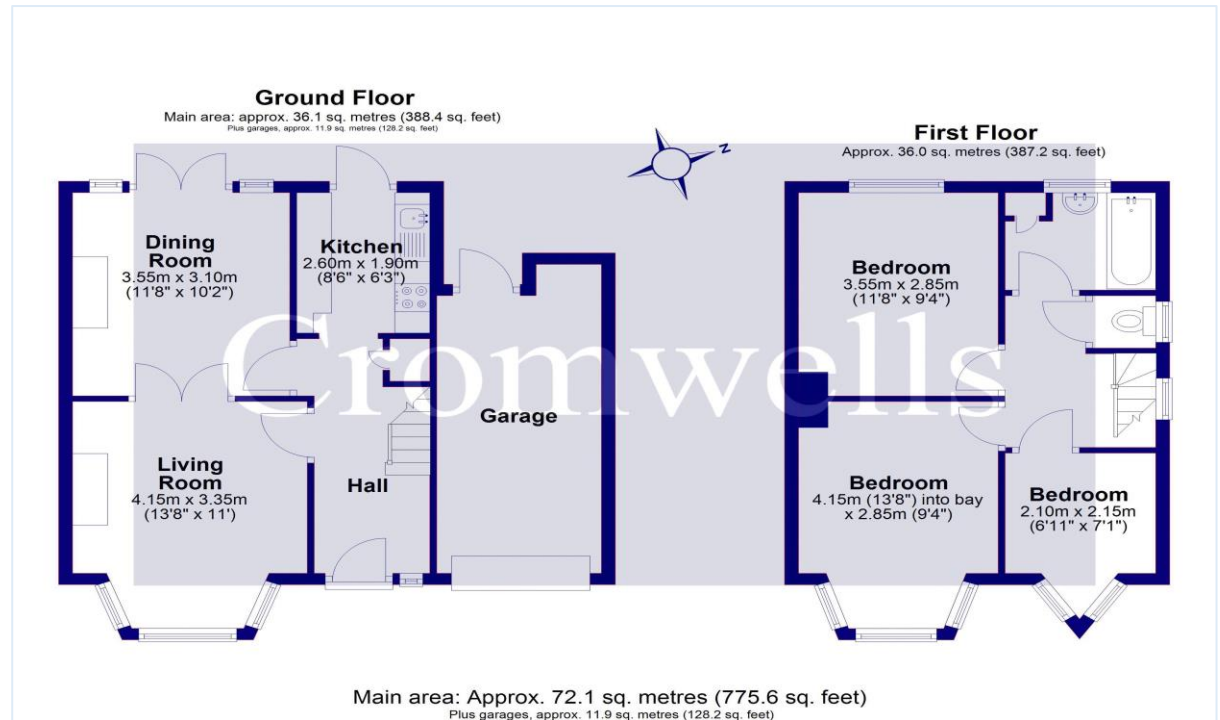
Council Tax - E
 Tenure - Freehold
 Square Foot – approx. 775.6 sq.ft (72.1 sq.mt)
 Plus, garage approx. 128.2 sq.ft (11.9 sq.mt)

Brabham Court, 45 Central Road
 Worcester Park
 Surrey
 KT4 8EA

020 8337 6603
 admin@cromwellswpark.com

Disclaimer

These particulars are not an offer or contract, nor part of one. You should not rely on statements made by Cromwells in the particulars or by word of mouth or in writing (“information”) as being factually accurate about the property, its condition or value. Neither Cromwells nor any joint agent has authority to make representations about the property, and accordingly any information given is entirely without responsibility on the part of the agents, seller(s) or lessor(s). Photographs show only certain parts of the property as they appeared at the time they were taken. Areas, measurements and distances are given as an approximate only. Any reference to alterations to or use of, any part of the property does not mean that any necessary planning, building regulations or other consents have been obtained



Score	Energy rating	Current	Potential
92+	A		
81-91	B		84 B
69-80	C		
55-68	D	66 D	
39-54	E		
21-38	F		
1-20	G		

