



Claverdale Road | Brixton, SW2



A stunning three bedroom terraced house within this popular residential pocket between Brixton Hill and Brockwell Park. Beautifully presented, the house is finished to a high standard yet retains period charm and character.

A front door opens onto a welcoming hallway leading to a South facing living room and a large kitchen/diner with an island and bifold doors opening onto an easy-to-maintain private garden. There are two large double bedrooms upstairs and a third smaller bedroom which is perfect as a nursery or a work from home space. A bathroom is larger than average and it accommodates a claw foot bathtub as well as a separate shower.

The loft is currently used for storage but can be converted subject to planning permission.

Claverdale Road is a quiet residential road moments from Brockwell Park. Brixton Village, Ritzy Cinema, Brixton Academy as well as numerous shops, bars and restaurants are easily accessible either by a 15-20 minute walk or a short bus ride.

Transport links include Brixton tube station, Herne Hill and Tulse Hill mainline as well as bus routes number 2, 415 and 432.

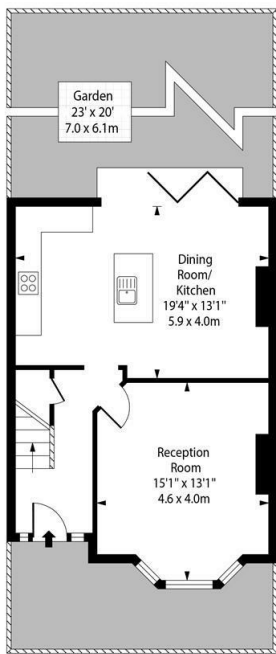
No chain. EPC=D. Council tax band D (Lambeth).

- Three bedroom terraced house
- Beautifully presented
- Potential to extend STPP
- Quiet residential road
- Moments from Brockwell Park
- No chain

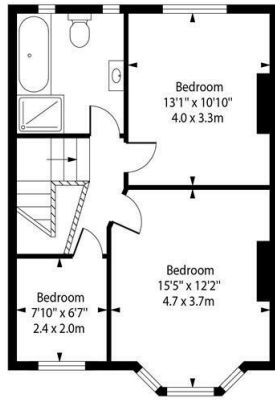
£750,000

Please contact our Brixton Office on 0207 274 3111 if you wish to arrange a viewing appointment for this property or require further information.





Claverdale Road,
Brixton, SW2 2DH



Ground Floor

First Floor

Approx Gross Internal Area 1044 Sq Ft - 97.0 Sq M

For Illustration Purposes Only - Not To Scale
photosandfloorplans.com ©



Energy Efficiency Rating	
Current	Potential
63	80

Environmental Impact (CO ₂) Rating	
Current	Potential



These particulars, whilst believed to be accurate are set out as a general outline only for guidance and do not constitute any part of an offer or contract. Intending purchasers should not rely on them as statements of representation of fact, but must satisfy themselves by inspection or otherwise as to their accuracy. No person in this firm's employment has the authority to make or give any representation or warranty in respect of the property.