



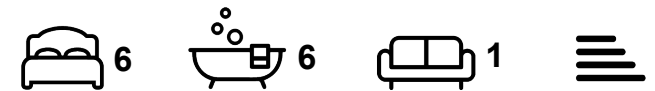
House

**31 ST MICHAELS  
ROAD,  
HEADINGLEY,  
LEEDS, LS6 3BG**

Per Week

**£720 Per**

FEATURES



**SJM** ©  
**PROPERTIES**

# 6 Bedroom House located in Leeds

Call us on

**01132782201**

**phil@sjm-properties.com**

**sjm-properties.com**

**Council Tax Band**

**D**

This property will undergo extensive renovation during the summer of 2026 and is offered for rental from September 2026 with the following works completed.

3 to 4 new bathrooms will be fitted so there will be 5 or 6 bathrooms in total, some of the bathrooms will be En-Suite.

There will be 6 large double bedrooms

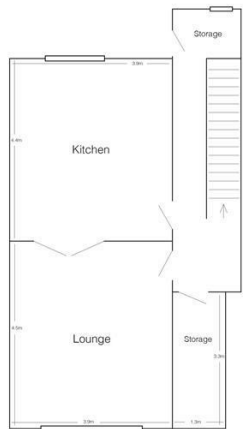
The lounge and kitchen will be made open plan with the dividing wall removed.

There will be a brand new fitted kitchen with the usual appliances including 2 fridge freezers, a washer dryer, oven and hob. The lounge and kitchen will have a modern wood floor throughout.

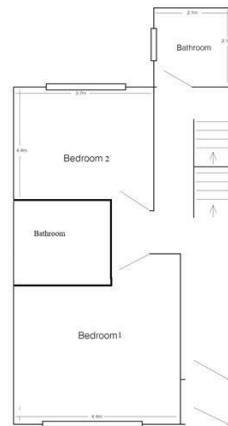
Each bedroom will be furnished with a double bed, wardrobe, chest of drawers and a desk and chair.

We have attached pictures and video of another similar property we have already completed which should give a good idea of the layout and finish, although this house is a little bigger than the video of Richmond Mount.

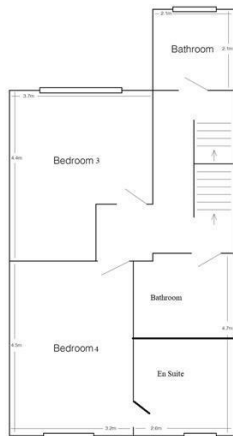
Utility bills can be included on request.



Basement



Ground Floor



First Floor



Second Floor

Energy Efficiency Rating		Current	Potential
<i>Very energy efficient - lower running costs</i>			
(92 plus) <b>A</b>			
(81-91) <b>B</b>			
(69-80) <b>C</b>			
(55-68) <b>D</b>			
(39-54) <b>E</b>			
(21-38) <b>F</b>			
(1-20) <b>G</b>			
<i>Not energy efficient - higher running costs</i>			
<b>England &amp; Wales</b>		EU Directive 2002/91/EC	

Agents Note: Whilst every care has been taken to prepare these particulars, they are for guidance purposes only. All measurements are approximate and are for general guidance purposes only and whilst every care has been taken to ensure their accuracy, they should not be relied upon and potential buyers are advised to recheck the measurements.

**SJM** <sup>©</sup>  
**PROPERTIES**