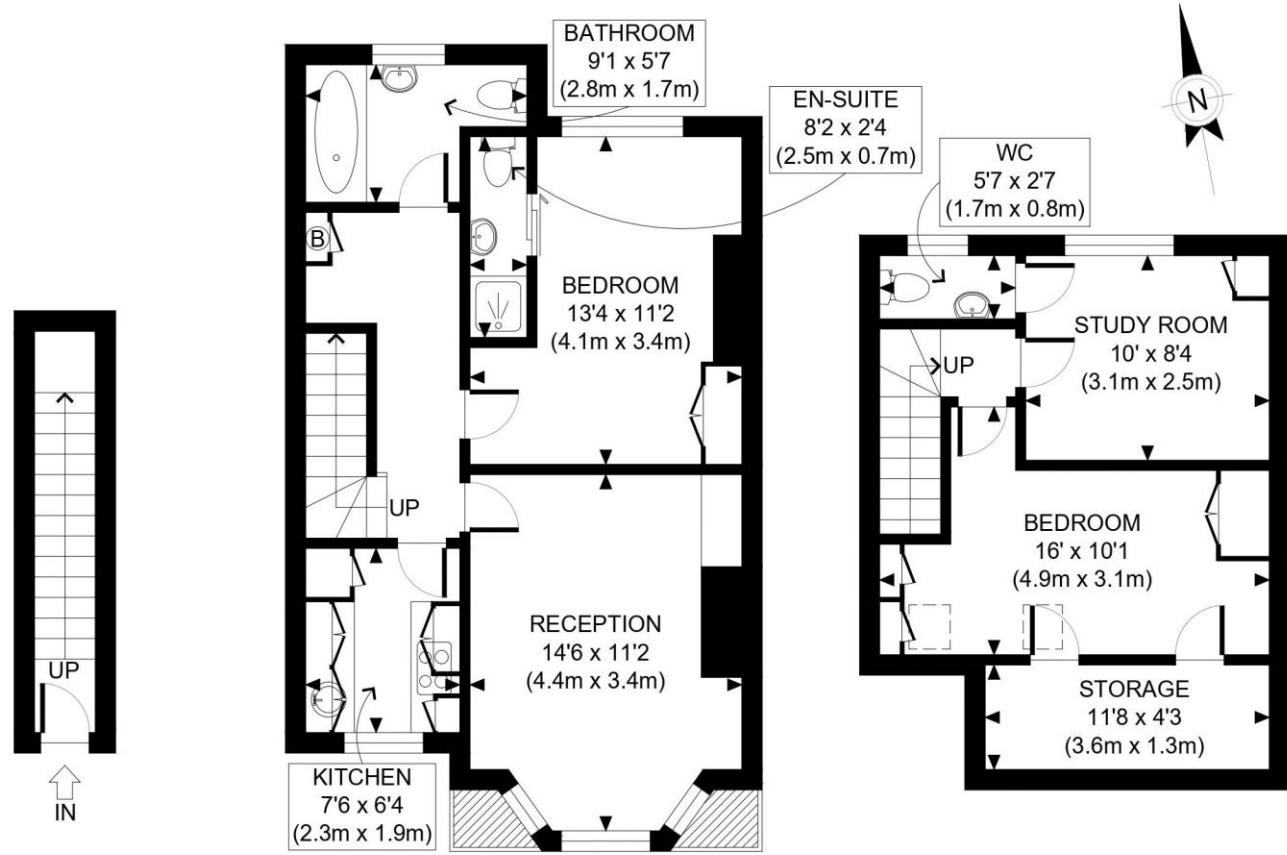


The Floorplan...



More Details From...

Call: Brian Cox North Harrow: 020 3866 6640
Email: nhadmin@brian-cox.co.uk
Web: www.brian-cox.co.uk



Consumer Protection from Unfair Trading Regulations 2008 We have not tested any apparatus, equipment, fixtures, fittings or services and so cannot verify that they are in working order or fit for purpose. You are advised to obtain verification from your solicitor or surveyor. References to the tenure of a property are based on information supplied by the seller. We have not had sight of the title documents and a buyer is advised to obtain verification from their solicitor. Items shown in photographs are not included unless specifically mentioned within the sales particulars, but may be available by separate negotiation. We advise you to book an appointment to view before embarking on any journey to see a property, and check its availability.



0203 866 6640
brian-cox.co.uk



Brian Cox Estate Agents are delighted to offer this stunning three bedroom first & second floor duplex flat to the market! The property is situated close to shopping facilities, sought after schools and Metropolitan line station. This property is across two floors and offers very large bedrooms and two bathrooms. Further benefits include gas central heating, the flat being sold with the ENTIRE freehold and it coming with its own private section of the garden. The property is also being sold chain free!



£399,950
 Freehold

Sussex Road, Harrow HA1 4NB



In Brief...

- Three Bedroom First Floor Maisonette
- Comes With ENTIRE Freehold
- Chain Free Purchase
- Private Section Of The Garden
- Located on Quiet Residential Road
- Two Bathrooms
- EPC Rating C & Council Tax Band C



The Location...

Nearest Stations ...

North Harrow (0.4 miles)
West Harrow (0.5 miles)
Harrow & Wealdstone (0.7 miles)

North Harrow is a suburban area of North West London, situated north-west of central Harrow within the London Borough of Harrow. North Harrow train station is a London Underground station situated in North Harrow in North West London. The station is on the Metropolitan line between Harrow-on-the-Hill (southbound) and Pinner (northbound). The area is served well by local amenities including a post office, Tesco Express, a selection of restaurants, take-aways and independent specialist shops. There are several schools in the area and churches.