



56 Compit Hills, Cromer - NR27 9LP

£380,000 Freehold

A Highly sought after residential location, Three Bedroom Detached Bungalow, Ample off Road Parking, Conservatory.

henleys
ESTATE AGENCY SIMPLIFIED

01263 511111
cromer@henleyshomes.co.uk

Set within one of Cromer's most desirable residential areas, this charming three-bedroom bungalow offers spacious and versatile living just moments from the town centre, pier, and beautiful beaches.

The welcoming living room opens into a bright conservatory overlooking the garden, creating a lovely space to relax or entertain. A generous kitchen, separate utility room, and flexible workshop/garage add practicality and potential, while three comfortable bedrooms provide adaptable living for families, guests, or home working.

Outside, the wraparound garden and sunny terraced area offer a peaceful retreat, complemented by private parking for up to four cars.

Warm, inviting, and full of potential, this is a wonderful opportunity to enjoy coastal living in a sought-after Cromer location.

Cromer

Set on the stunning North Norfolk coast, Cromer is a charming seaside town renowned for its sandy beaches, iconic Victorian pier, and relaxed coastal atmosphere. Famous for its traditional seaside character and celebrated Cromer crab, the town offers a wonderful mix of independent shops, cafés, restaurants, and scenic coastal walks.

Surrounded by beautiful countryside and dramatic coastline, Cromer is ideal for those seeking a peaceful lifestyle while still enjoying a vibrant local community. With excellent transport links, a welcoming atmosphere, and year-round appeal, it remains one of North Norfolk's most sought-after coastal destinations.

Council Tax band: C

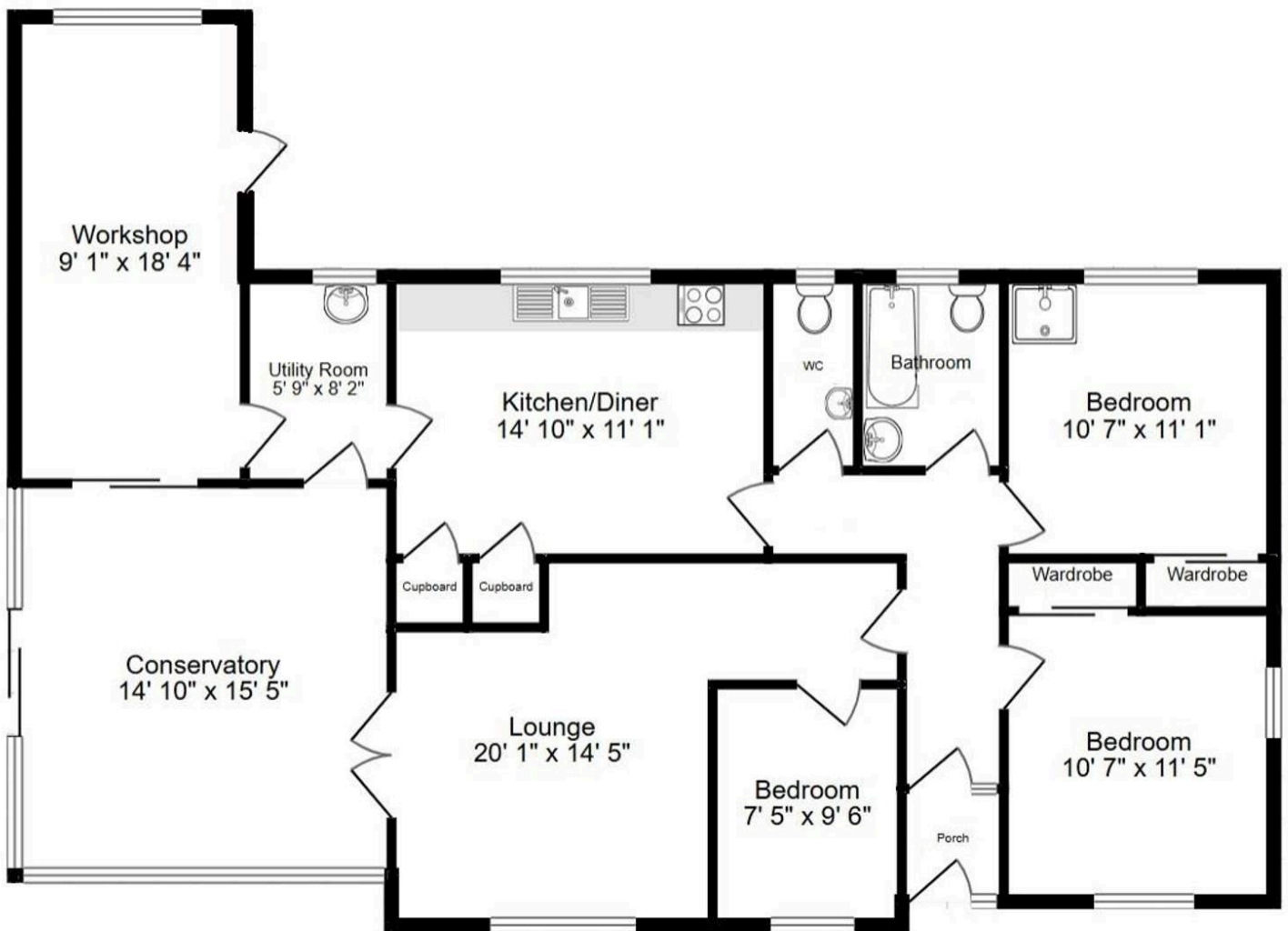
Tenure: Freehold

EPC Energy Efficiency Rating: D

EPC Environmental Impact Rating: C







Come in & see us

If you'd like to know more about this home, get in touch or pop into our Cromer branch. Whether it's a quick question about the property or a chat about selling your own home, we're here to help with straightforward advice.



15 West Street, Cromer, Norfolk, NR27 9HZ

01263 511111 • hello@henleyshomes.co.uk • henleyshomes.co.uk

These particulars and measurements whilst believed to be accurate, are set out as a general outline only for guidance and do not constitute any part of an offer or contract. Intending purchasers should not rely on them as statements of representation of fact, but must satisfy themselves by inspection or otherwise as to their accuracy. No person in this firm's employment has the authority to make or give representation or warranty in respect of the property.

