



Guide Price
£150,000

Leasehold

2x  2x  1x 

**Silver Birch House,
Thistle Hill Way, Minster
On Sea, Kent, ME12**

OVER 60?

Secure this property
for up to **59% less!**

Wards
Helping you move forwards



Main features

- **Second floor purpose built apartment**
- **Ready to move straight into**
- **Great size lounge/diner**
- **Bathroom plus en-suite shower room to the main bedroom**
- **Modern kitchen with built in oven and hob**
- **Allocated parking**

Accommodation

SECOND FLOOR

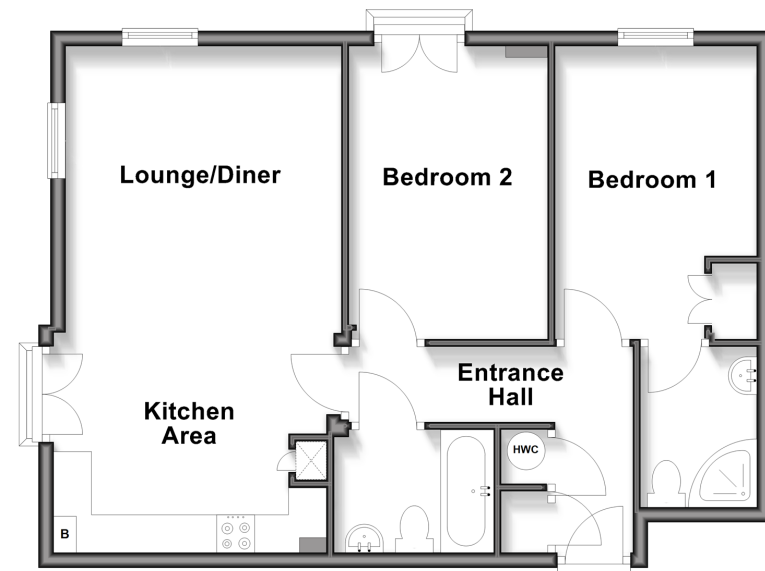
- Entrance Hall
- Lounge/Diner: 21'5 x 12'5 (6.53m x 3.79m)
- Kitchen Area
- Bedroom 1: 13'0 x 9'10 (3.97m x 3.00m)
- En-suite Shower Room: 6'9 x 5'0 (2.06m x 1.53m)
- Bedroom 2: 12'7 x 8'10 (3.84m x 2.69m)
- Bathroom: 6'8 x 5'8 (2.03m x 1.73m)

OUTSIDE

- Allocated Parking

Second Floor

Approx. 60.5 sq. metres (651.2 sq. feet)



Call Sheerness - 01795 664651 ■ wardsokent.co.uk

■ Through a Homewise Home For Life Plan people aged 60+ can secure this property for up to 59% less, by purchasing a Lifetime Lease



11635876/20260414/SS/MH