



Brendon Way

Eastwood

- 100' LANDSCAPED GARDEN
- LARGE SIDE KITCHEN EXTENTION
- DOWNSTAIRS W.C.
- LARGE MODERN FIRST FLOOR BATHROOM

Guide Price £400,000

Beautifully presented character extended three bedroom home with an exceptional size landscaped garden. 21'5 living room & separate snug room as well as a great conservatory overlooking the garden. Ideal for schools of all ages and local shopping. Gas central heating and double glazing.





AGENTS NOTES.

DO NOT HESITATE TO BOOK AN APPOINTMENT FOR THIS ONE !

Fabulous extended three bedroom home with an exceptional 100' landscaped garden with a large patio area. Plenty of off road parking, gas central heating and double glazing.

In addition there is a character 21'5 living room with doors opening out to the conservatory across the rear opening onto the garden.

There is also an additional snug / study to the ground floor.

Three bedrooms and a large modern family bathroom are located on the first floor.

Great location for schools and shops.



PORCH

HALLWAY

LIVING ROOM

21' 5" x 11' 0" (6.53m x 3.35m)

SNUG / STUDY

7' 4" x 6' 7" (2.24m x 2.01m)

GROUND FLOOR W.C.



CONSERVATORY

16' 2" x 7' 6" (4.93m x 2.29m)

KITCHEN

14' 4" x 10' 9" (4.37m x 3.28m)

LANDING

BATHROOM

10' 9" x 6' 6" (3.28m x 1.98m)



BEDROOM

14' 3" x 12' 4" (4.34m x 3.76m)

BEDROOM

11' 0" x 9' 6" (3.35m x 2.9m)

BEDROOM

9' 3" x 6' 0" (2.82m x 1.83m)

GARDEN

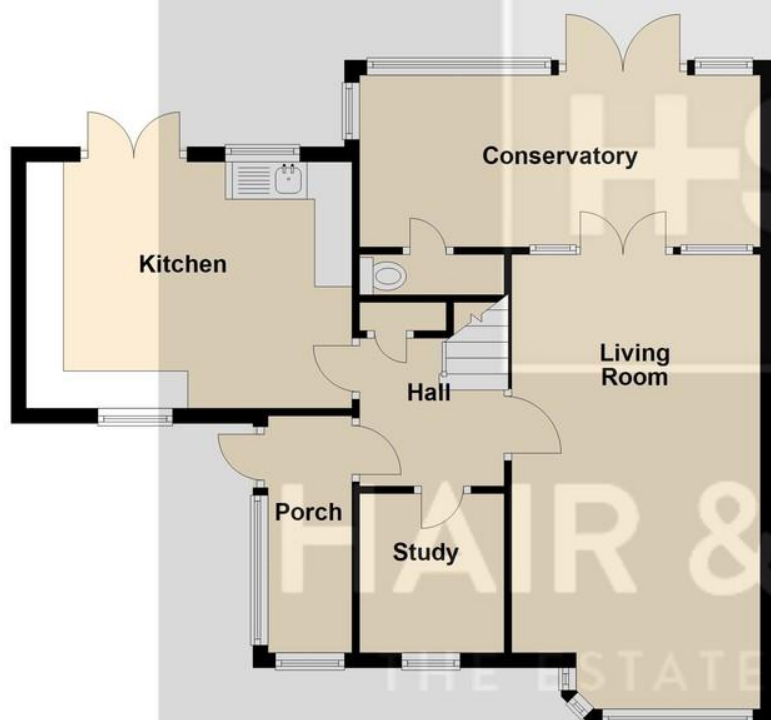
100" (30.48m)



These particulars are accurate to the best of our knowledge but do not constitute an offer or contract. Photos are for representation only and do not imply the inclusion of fixtures and fittings. The floor plans are not to scale and only provide an indication of the layout.

Ground Floor

Approx. 62.1 sq. metres (668.3 sq. feet)



First Floor

Approx. 44.4 sq. metres (478.0 sq. feet)



Total area: approx. 106.5 sq. metres (1146.3 sq. feet)

Regulated by RICS

t. 01268 774316
More than an estate agent
www.hairandson.co.uk

Residential Sales
6 High Street
Rayleigh
Essex SS6 7EF

